



Reimagining Restrooms for Human Health & Wellness

*An Introduction to Design & Product Strategies
for Cleaner, Healthier Restrooms*

BOBRICK

BUILDING VALUE SINCE 1906

A free copy of this guide is available at [bobrick.com](https://www.bobrick.com)

Subject Matter Experts

Juliet Ferrelli

Director of Infection
Prevention
Allegheny Health Network



David Dickman, AAP, CIMP

Consultant
Allynt Solutions



Lee Pasteris, NCIDQ

Design Director, Principal
Gensler



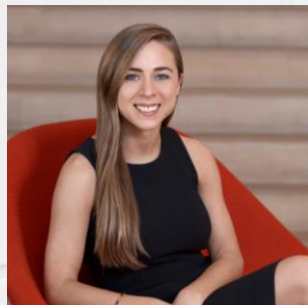
Alan Gettelman

Vice President, External
Affairs
Bobrick



Caroline Feran, NCIDQ

Associate, Interior
Designer
Gensler



Top Challenges for Restrooms

- Crowded, enclosed spaces
- Physical distancing
- Airflow & moisture
- Numerous touchpoints
- Access to hygiene amenities
- Entry & exit



Centers for Disease Control (CDC) Guidance

- Frequent, proper handwashing & drying
- Controlling overcrowding and traffic of spaces
- Ensure adequate ventilation and airflow/quality
- Signage or indications for proper distancing/hygiene practices
- Cleaning and disinfecting with EPA-approved disinfectants
- Increasing the frequency of cleaning



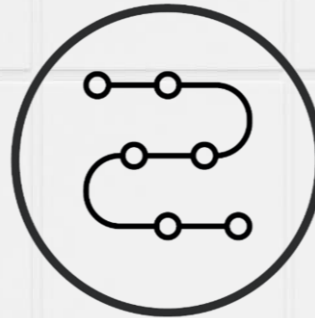
Protocols & Strategies to Consider to Address Health & Wellness Challenges



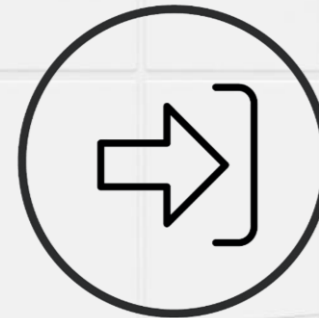
Occupancy



Signaling



Queuing



Door Entry



Active Use

Healthy Product Solutions



Design Case Study

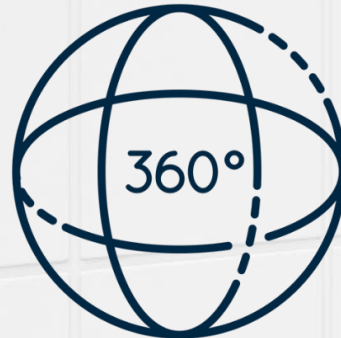
A 360° perspective for evaluating post-COVID design

Overall Risk Assessment

- Physical distancing & density
- Airflow & moisture
- Touchpoint reduction

Product Selection

- Touchless products
- Ease of maintenance & refills
- Innovative solutions
- Waste disposal
- Toilet compartment enhancements



Mitigation, Cleaning & Maintenance

- Consumable management
- Manufacturer documentation
- Stockout & downtime prevention
- Ease of cleaning & maintenance
- Facility auditing & monitoring

Space Design

- Entry & exit doors
- Queuing & gathering
- Traffic flow
- Signage
- Accessibility

Effective Handwashing & Drying

Design Perspective

- Automatic preferred for reduction of touchpoints and peace of mind
- Users always interact with dispensers—automatic or manual—before they wash their hands
- Evaluate pros and cons of paper towels versus hand dryers



B-824



B-823



B-3725

Positioning Facilities for Handwashing Success

Maintenance Perspective

- If buildings don't have soap, towels and hot water, patrons won't wash and dry their hands
- Take care in product selection to reduce risk of “dispenser downtime”
- Dispensers and fixtures—free of buildup and debris—should be easy to disinfect, sanitize and restock
- Products should be easy to obtain refills for—and refill



Proprietary vs. Non-Proprietary Soap Cartridges

- Staff must replace each plastic cartridge with a new one
- Prone to supply chain disruptions and stockout issues
- Empties faster, resulting in excess packaging waste
- Labor intensive and expensive
- Non-proprietary systems minimize soap reliability concerns



Effective Handwashing & Drying

B-824 SureFlo® Automatic Liquid Soap Dispenser

- Touch-free, automatic operation with precise electronic activation system
- Reliable hygiene; top-filled with bulk soap
- 25% labor savings compared to under-counter solutions
- ROI averages one year
- Polished chrome finish for design continuity
- 57% reduction in post-consumer waste



B-824 SureFlo®
Automatic Liquid Soap
Dispenser

Effective Handwashing & Drying

Designer Series Soap Dispensers & Faucets

- All the benefits of B-824 SureFlo® with a range of finishes with matching faucets
- Finishes include:
 - Polished Chrome
 - Polished Nickel
 - Brushed Nickel
 - Polished Brass
 - Matte Black



B-852 and B-8872
Matte Black
Designer Series Soap
Dispenser and Faucet

Positioning Facilities for Handwashing Success

B-823 Manual Foam Soap Dispenser

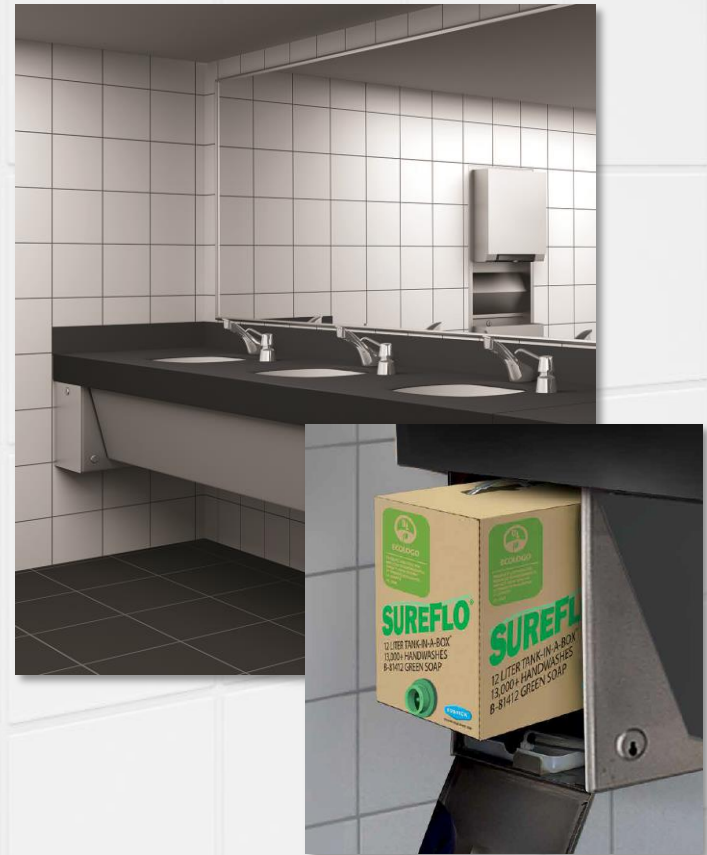
- Frees facilities from proprietary contracts
- Top-fills with bulk soap
- Helps keep stockrooms and dispensers full, ensuring patrons always have access to soap



Positioning Facilities for Handwashing Success

B-830 SureFlo® Tank-in-a-Box System

- Significantly reduces servicing time
- Eliminates need to remove panels to change cartridges
- Low-soap indicator light and built-in reservoir



Effective Handwashing & Drying

B-3725 ADA Recessed Hand Dryer

- Oversized, absorbent alcove captures water to prevent unsanitary water trails
- Labor savings
- Slim, minimalistic, ADA-compliant design



B-3725 ADA Recessed Hand Dryer

Additional Product & Design Solutions

- Eliminate water trails by counter-mounting accessories, other products
- Touchless, floor-standing waste receptacles between lavatories
- Touchless hand dryers combined with towel dispenser, waste receptacle
- Personal device holders
- Non-porous surfaces prevent bacteria accumulation and enable effective cleaning



Additional Product Solutions

B-635 Klutch Mobile Device Holder

- Up to 75% of Americans use smart devices in the restroom
- Keeps devices safe and far away from wet or unsanitary restroom surfaces



B-635 Klutch Mobile Device Holder

Additional Product Solutions

B-635 Klutch Mobile Device Holder



Toilet Compartment Solutions

- Touchless plumbing fixtures
- Add paper towel dispenser, waste disposal and hand sanitizer dispenser inside toilet compartments, at urinals
- Toilet compartment door latches to operate without grasping
- Non-porous surfaces prevent bacteria accumulation and enable effective cleaning
- Consider additional amenities



PRIVADA Cubicles Hand-Free Door Latch

Proper Waste Disposal

- Automatic or foot-operated waste disposal
- Waste receptacles near entry/exit and corners
- Can be recessed or within combination units



B-35633



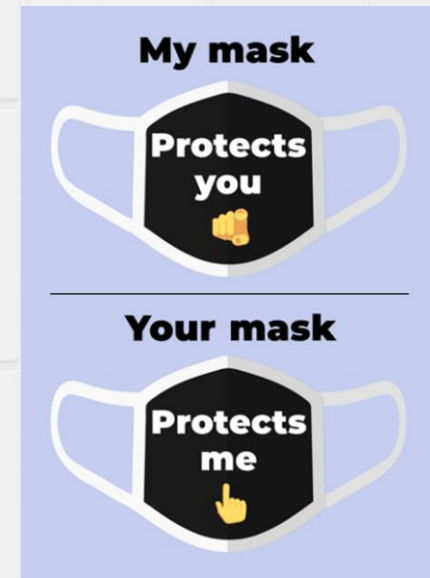
B-221216

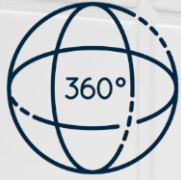


B-268

Signage

An Emerging Product Offering





Concept Plan

Hands-Free Access

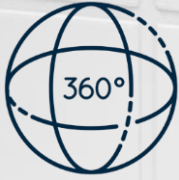


Hands Free Access



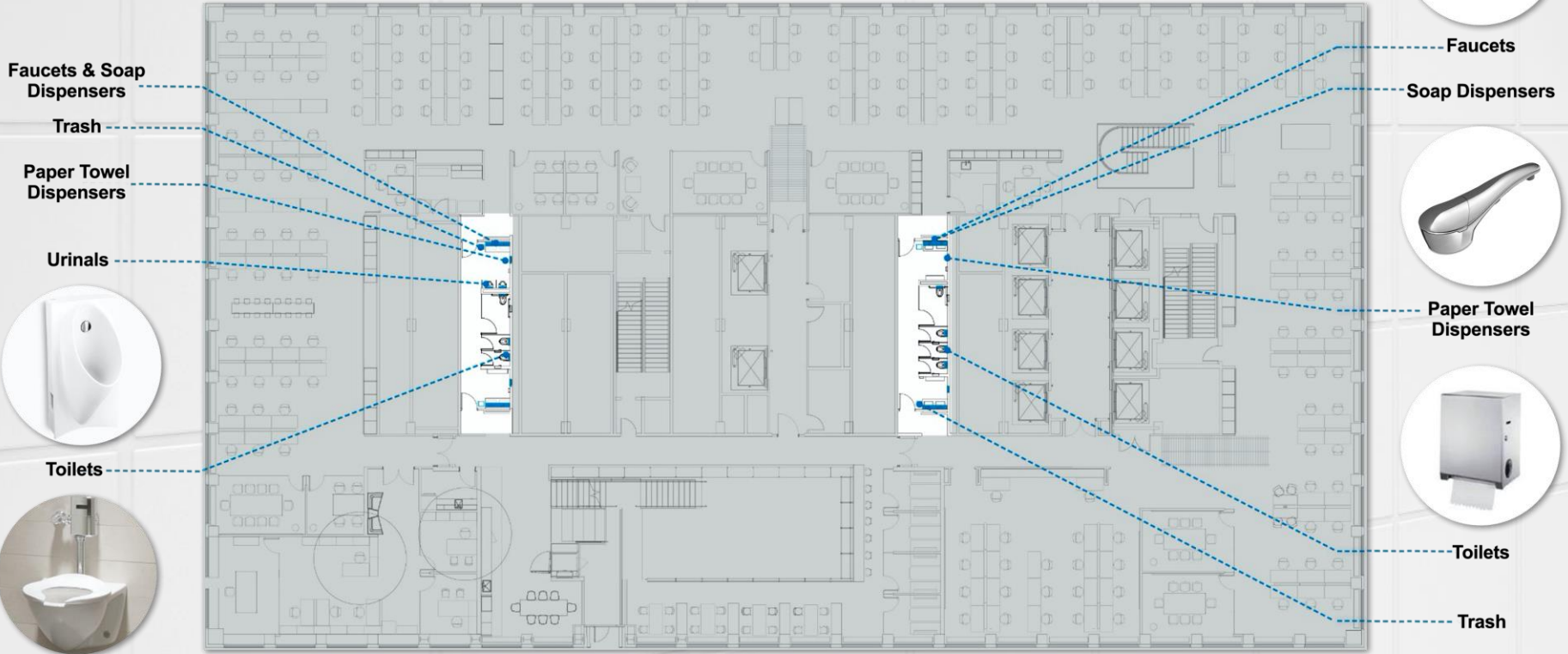
Hands Free Access





Concept Plan

Hands-Free Fixtures

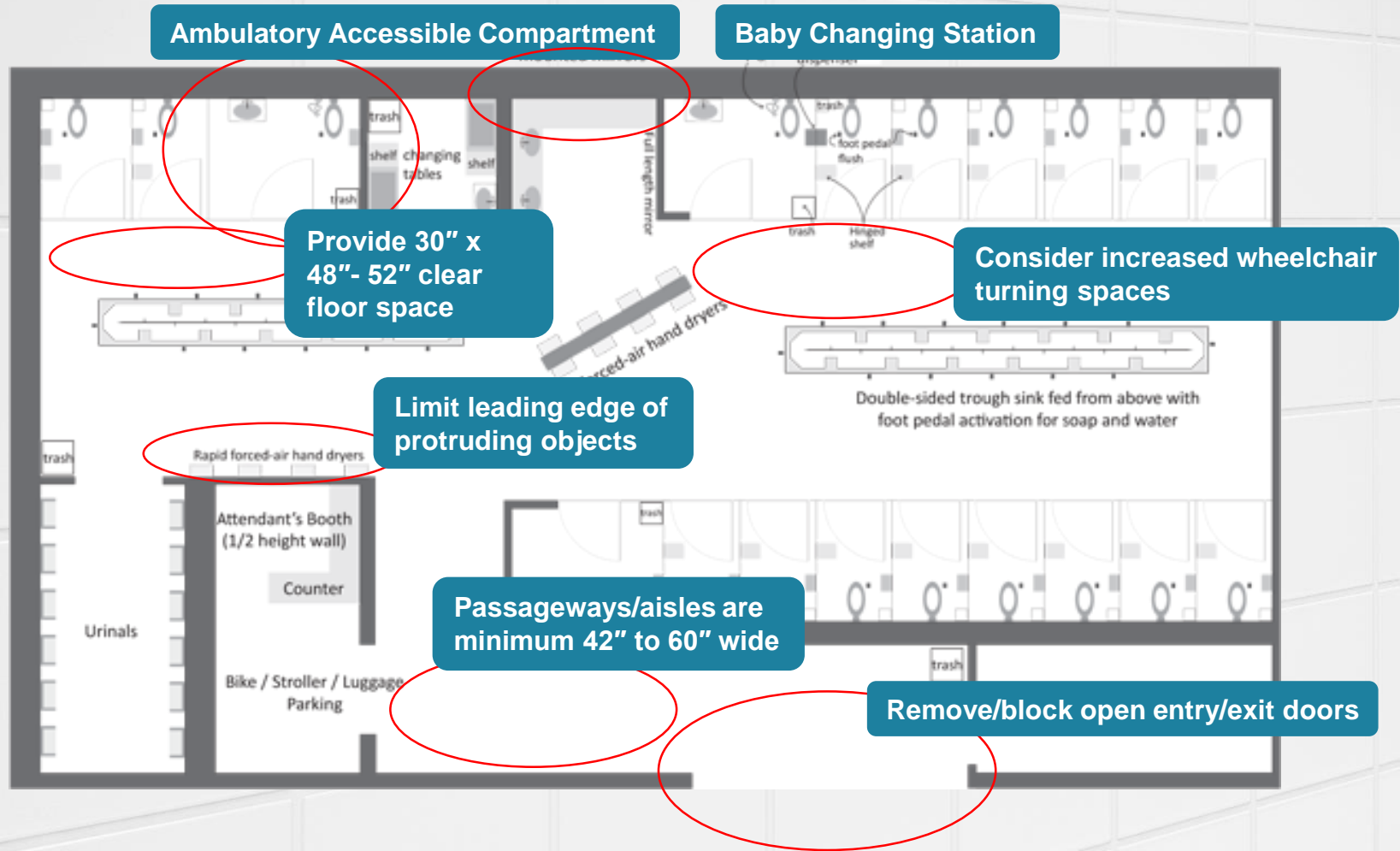


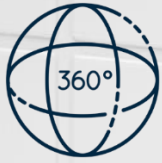
Space Planning Solutions

- Maintain 6' physical distancing spacing
- Remove or block open exit/entry doors
- Hand sanitizer stations outside the restroom
- Reduce restroom capacity
- Add urinal screens between lavatories above countertop surface
- Increase height of toilet compartments and urinal screens
- Shared, non-gendered handwashing stations



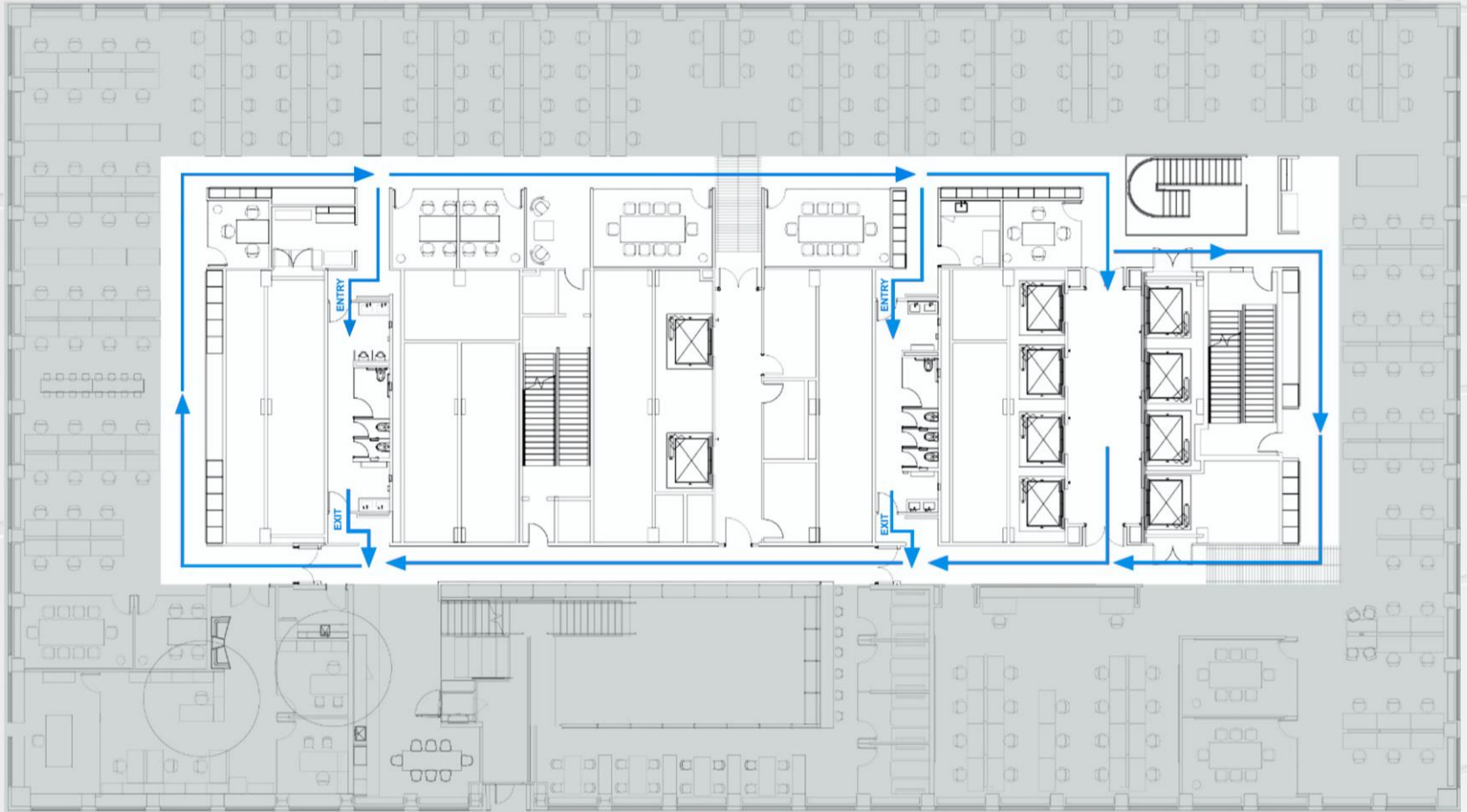
Maintaining Accessibility





Concept Plan

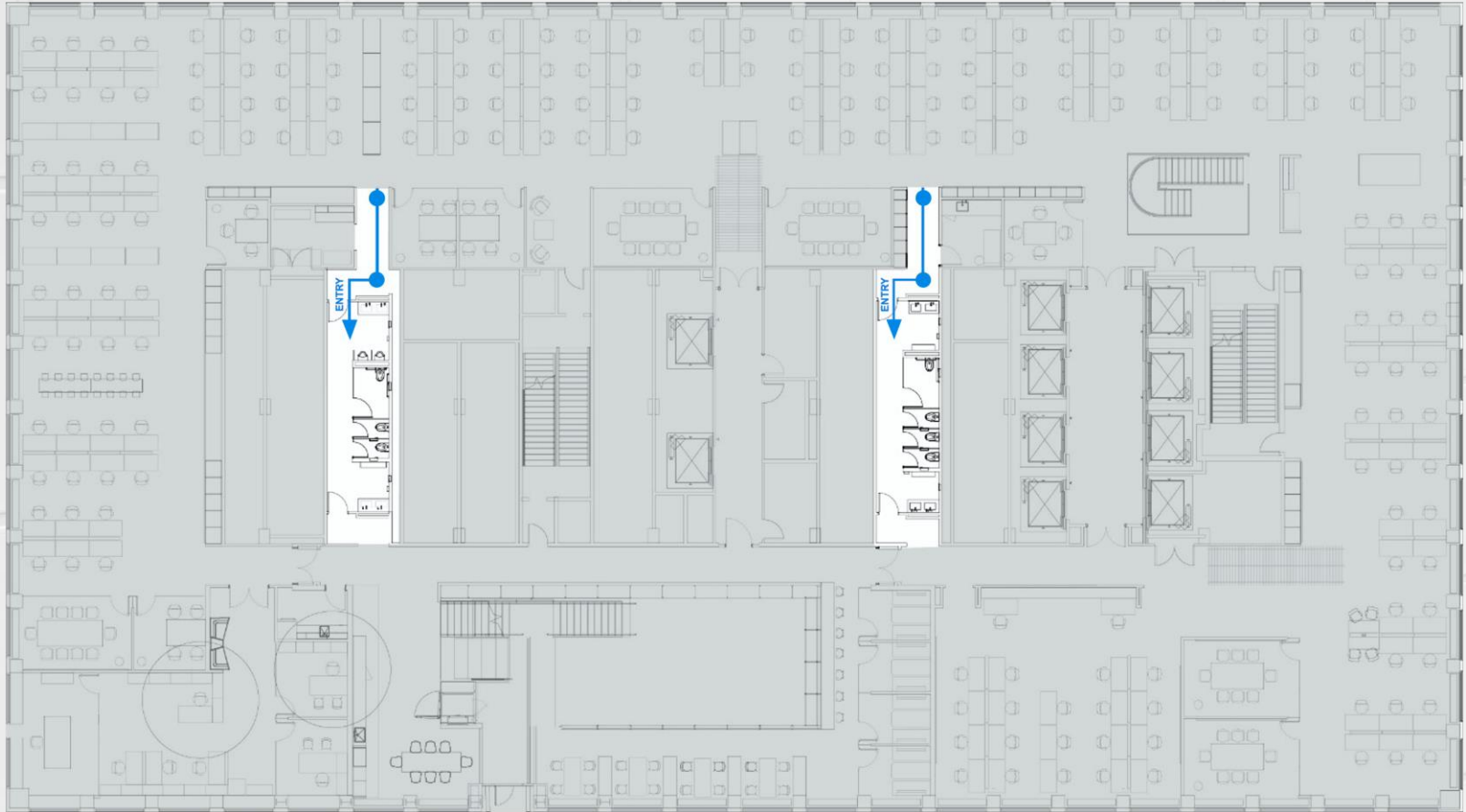
Circulation





Concept Plan

Queuing Areas



**Thank you for your interest in Reimagining Restrooms
for Human Health & Wellness.**

**Please contact Bobrick Washroom Equipment, Inc.
if you have questions related to the information
presented within this program.**



BUILDING VALUE SINCE 1906