

DESIGN

COMPLIANT

HYGIENIC

SUSTAINABLE

BOBRICK

BUILDING VALUE SINCE 1906

DDA Compliance Catalogue

Everything you need to know for compliant washrooms
from a name you trust.





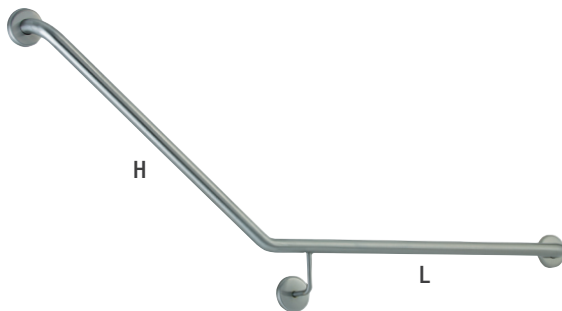
Ambulant

STRAIGHT GRABRAILS



Model	Length (mm)
819439 (shown)	300
819440	450
819441	600
819442	750
819443	900
820670	1000
820671	1200

40 DEGREE GRABRAILS



Model	Length	Height	Side*
819487 (shown)	850	700	Right
819488	850	700	Left
820672	450	700	Left
820673	450	700	Right

*Side refers to which side of the toilet, tub/shower the grabrail is installed when seated.

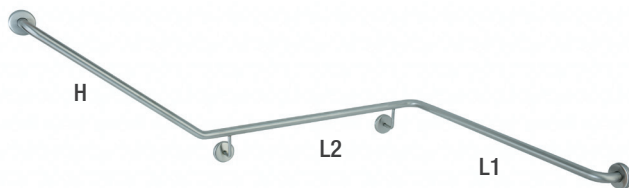
90 DEGREE GRABRAILS



Model	Length	Height	Side*
819435 (shown)	950	700	Right
819436	950	700	Left
820316	450	450	L/R

*Side refers to which side of the toilet, tub/shower the grabrail is installed when seated.

40 DEGREE WRAPAROUND GRABRAILS



Model	Length1	Length2	Height	Side*
819437 (shown)	1000	900	700	Right
819438	1000	900	700	Left

*Side refers to which side of the toilet, tub/shower the grabrail is installed when seated.

DDA DESIGNER NOTES

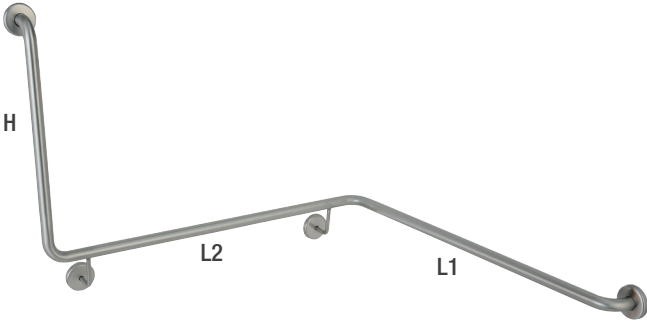
In accordance with Clause 15.2.6 of AS 1428-2009, grabrails must be installed with the top of the rail between 800 and 810 mm above the floor. In accordance with Clause 17 of AS 1428-2009, the clearance above a horizontal grabrail shall extend above the top of the grabrail not less than 600 mm. The clearance below a horizontal or angled rail shall be a minimum of 50 mm.

DDA DESIGNER NOTES

In accordance with Clause 17 of AS 1428.1-2009, grabrails shall have an outside diameter between 30 mm and 40 mm, clearance between the grabrail and the adjacent wall surface shall be no less than 50 mm and no more than 60 mm and shall support 1110 N applied force when properly installed.

Grabrails are no stronger than the anchors and walls to which they are attached and, therefore, must be firmly secured in order to support the loads for which they are intended. To avoid potential injury, the building owner or maintenance personnel should remove the grabrail from service if the grabrail is not adequately secured to wall or if there is any observed damage to the welds.

90 DEGREE WRAPAROUND GRABRAILS



Model	Length1	Length2	Height	Side*
819491 (shown)	1000	975	600	Right
819492	1000	975	600	Left

*Side refers to which side of the toilet, tub/shower the grabrail is installed when seated.

SHOWER/DRESSING AREA SEAT



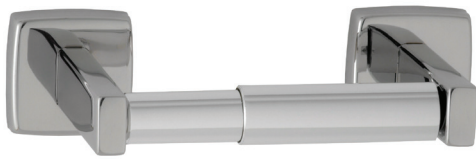
819687
 Folding seat of one-piece, 13 mm thick, solid phenolic, ivory-colored face. Integral holes for water drainage. Type 304 frame and mounting apparatus. Supports up to 227 kg, when properly installed. Dimensions: 960 x 620 x 135 mm (closed); 390 mm projection open.

Accessories for Toilet Cubicles

DDA DESIGNER NOTES

In accordance with Clause 15.2.6 of AS 1428.1-2009 the outlet for toilet paper dispensers shall be between 0 and 300 mm from the leading edge of WC with a maximum height of 700 mm. The toilet paper dispenser shall not encroach upon the clearance space required around the grabrail as specified in Clause 15.2.7 of AS 1428.1-2009.

TOILET TISSUE DISPENSERS



B-685

Bright-polished stainless steel. Support arm flanges lock to concealed stainless steel wall plate. Chrome-plated plastic spindle holds rolls up to 140 mm diameter (1800 sheets).

B-6857 Similar to B-685, but with satin finish.



B-6999

Bright-polished stainless steel. Hoods protect paper. Dimensions: 314 x 157 x 121 mm.

B-699 Similar to B-6999, holds single roll. Dimensions: 157 x 157 x 121 mm.



B-546

Satin-finish stainless steel. Hood protects paper. Dimensions: 140 x 145 x 35 mm.

B-547 Similar to B-546 but holds two rolls. Dimensions: 270 x 146 x 35 mm.

B-543 Similar to B-546 but without hood.

B-548 Similar to B-547 but without hoods.

COAT HOOK



B-542

Type 304 satin-finish stainless steel. Threaded escutcheon conceals mounting flange, provides snug fit to wall.

Dimensions: 50 mm diameter x 33 mm projection.

Accessories for Washrooms

SOAP DISPENSERS



B-2012

Sensor-operated liquid soap dispenser. Satin-finish stainless steel. 850 ml capacity.
Dimensions: 108 x 242 x 107 mm.

B-2013 Similar to B-2012, but dispenses foam.
Dimensions: 108 x 242 x 107 mm.



B-4112

Satin-finish stainless steel, corrosion-resistant valve.
1.2 L capacity.
Dimensions: 178 x 156 x 84 mm.

B-4063 similar to B-4112, but recessed.
Dimensions: 185 x 162 x 98 mm.

TEMPERED GLASS MIRRORS



B-2908 1639

One-piece, roll-formed angle frame in Type 304 satin-finish stainless steel. Tempered glass mirrors resist breakage and provide a measure of safety from broken glass.
Dimensions: 406 x 990 mm.



B-1658 1639

One-piece channel frame in Type 430 bright-polished stainless steel. Tempered glass mirrors resist breakage and provide a measure of safety from broken glass.
Dimensions: 406 x 990 mm.

DDA DESIGNER NOTES

In accordance to Clause 15.4.1 of AS 1428.1-2009, a vertical mirror with a reflective surface not less than 350 mm wide shall extend from a height of not more than 900 mm to a height of not less than 1850 mm above the plane of the finished floor.

Angled or tilted mirrors should not be used since they do not work for all users or accessible facilities.

Accessories for Washrooms

DDA DESIGNER NOTES

In accordance with Clause 15.4.2 of AS 1428.1-2009, shelf space shall be provided adjacent to the washbasin either as a vanity top or as a separate fixture.

A separate fixture within any circulation space should be installed at a height of 900 mm to 1000 mm with a width of 120 mm to 150 mm and a length of 300 mm to 400 mm.

External to all circulation spaces, a fixture should be installed at a height of 790 mm to 1000 mm with a minimum width of 120 mm and a minimum length of 400 mm.

UTILITY SHELF



B-295x14

Type 304, 1.2 mm thick, satin-finish stainless steel. 19 mm return edges for maximum rigidity and hemmed front edge for safety.
Dimensions: 355 x 125 mm.

HAND DRYERS



B-7125

Type 304 satin-finish stainless steel; 200 watt output with 12-second dry time.
Dimensions: 319 x 274 x 98 mm.



B-7128

Type 304 satin-finish stainless steel cover with black plastic trim.
Dimensions: 350 x 345 x 100 mm.

B-7120 Similar to B-7128, but with white epoxy-painted cover.



B-3725

Recessed hand dryer featuring 150 mm deep drying alcove to capture dripping water. Type 304 satin-finish stainless steel; 1.0 kilowatt output.
Dimensions: 406 x 1391 x 51 mm.

Accessories for Washrooms

COMBINATION UNITS



B-4369 Paper Towel Dispenser and Waste Bin
Satin-finish stainless steel. Flush tumbler lock. Dispenses 350 C-fold or 475 multi-fold towels. Waste bin has 11.4 L capacity. Removable front panel for easy cleaning. Includes TowelMate™ and LinerMate™ accessories.
Dimensions: 324 x 711 x 68 mm.

BABY CHANGE TABLES



KB110-SSRE-INB
Satin-finish stainless steel exterior with grey polyethylene interior. Smooth, concave changing bed with safety straps, liner dispenser, bag hooks and moulded instructions.
Dimensions: 940 x 585 x 5 mm.

KB110-SSWM-INB Similar to KB110-SSRE-INB, but wall-mounted.
Dimensions: 892 x 508 x 102 mm.



KB200-00
Cream polypropylene with heavy-duty 6-point mounting which supports 91 kg with virtually no deflection from 90 degrees. Concealed hardware, dual bed liner dispensers and bag hooks. Also in grey (KB200-01), white granite (KB200-05) and earth (KB200-11).
Dimensions: 894 x 565 x 10 mm.



KB200-01SS
Grey polypropylene with heavy-duty 6-point mounting which supports 91 kg with virtually no deflection from 90 degrees. Concealed hardware, dual bed liner dispensers and bag hooks. Also in white granite (KB200-05).
Dimensions: 894 x 565 x 10 mm.

DDA DESIGNER NOTES

Koala Kare changing tables meet the most rigorous standards in the world, including DDA, USADA, ASTM, EN and TUV (KB200, KB200-SS).

In accordance to Clause 15.2.8.2 of AS 1428.1-2009, baby changing tables shall not encroach into the circulation space of any other toilet facility when in the folded up position; and changing bed shall have a maximum height of 820 mm and minimum clearance underneath of 720 mm when in the open position.

Liners sold separately.

COMBINATION PAPER TOWEL DISPENSER, WASTE BIN, WARM AIR HAND DRYER



3IN1 Combination

Flush TrimLine™ design, space-saving 100 mm cabinet depth, and satin-finish stainless steel door compliments any washroom from Class-A offices to fine restaurants.

Dispenses 600 multi-fold or 450 C-fold paper towels. Built-in TowelMate™ for towel savings. Leak-proof waste bin has 13.7 L capacity. Hand dryer: 208-240V AC, 4 Amp, 900 Watts, 50/60 Hz Single Phase, VDE approved, CE marked. AS/NZS 60335.2.23:2004 compliant.

Dimensions: 396 x 1448 mm

Model	Depth	Capacity
B-38030	100 mm	13.7 L
B-38031	202 mm	27.4 L
B-380309	114 mm	13.7 L

DDA DESIGNER NOTES

In accordance with Clause 15.4.3 of AS 1428.1-2009, towel dispensers and similar fittings (hand dryers, waste bins) are to be installed with the height of their operative component or outlet not less than 900 mm and not more than 1100 mm above the plane of the finished floor.

Bobrick's B-38030 locates hand dryer outlets, towel tray opening and waste bin in a central "drying zone" to meet this requirement.

Bobrick Washroom Equipment

Bobrick.com

Australia 1800.353158, info@bobrick.com.au

Corporate +1.818.764.1000, international@bobrick.com



BUILDING VALUE SINCE 1906