



BUILDING VALUE SINCE 1906

Washroom Accessories



TowelMate™
Paper Saving
System
Pages 10, 14



LinerMate™
Waste Bag
Holder
Pages 13, 17

Improved ConturaSeries™ now includes
TowelMate and LinerMate built in as
standard features at no additional charge
Pages 10, 14, 16



Automatic Roll
Towel Dispensers
Pages 12, 13, 15



TrimLineSeries™
Warm Air
Hand Dryers
Page 18



Koala Kare™
EN-Compliant
Horizontal Baby
Changing Station
Page 20



Prestige Environments Washrooms with a Sense of Occasion

In these prestigious buildings and signature projects, typical washroom characteristics would include excellent architectural design and the use of high-quality materials and equipment. Traffic flow would normally be moderate to low and abuse negligible.

For those buildings, where only a distinctive design statement and co-ordinated, high-quality finishes are appropriate, stainless steel washroom accessories are the natural choice.

Here, the flush fit of TrimLineSeries and the subtle curve of ConturaSeries provide valuable creative flexibility. These design features give strong visual continuity to both ranges. And the strength of their stainless construction means that their good looks will stand the test of time.

-
- Corporate Headquarters
 - Civic and Performing Arts Centres
 - Major Universities
 - High Specification Office Projects



Wynn Macau Resort



Federation Square, Melbourne



Museum of Islamic Art, Doha

- Trump Ocean Club, Panama
- City of Dreams, Macau
- KPMG Headquarters, Berlin
- Festspielhaus, Bregenz
- The Getty Center, Los Angeles
- Banco Santander, Sao Paulo
- New Street Square, London
- Burj Khalifa, UAE
- The Museum of Modern Art, New York
- Ocean Financial Centre, Singapore
- Hotel Westin, Cancun
- CISCO, Bangalore
- London Coliseum



Heavy Traffic Environments High Capacity and Extreme Durability

Typically, these are buildings with public access where large groups of people require the use of washroom facilities, often over short periods. In this case, washrooms and the accessories within them have to withstand periods of extremely high usage. Vandalism and abuse are to be expected and durability and extra-large capacities become essential design considerations.

Intensive usage places high demands on the durability of products used in the washroom environment. High capacity allows reasonable service intervals to be maintained without compromising washroom tidiness.

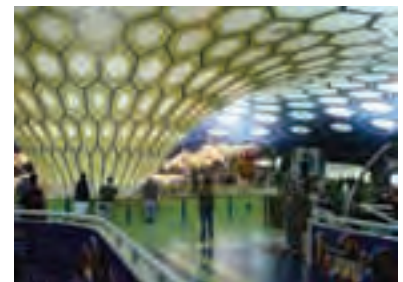
Stainless steel is ideal for these harsh conditions, providing long life while retaining its aesthetics.

Shopping Precincts and Theatres

Sports Stadia and Concert Halls

Public Transport Hubs

Amusement Parks



Abu Dhabi International Airport, UAE



Hong Kong Convention Centre



O2 Arena, Berlin

- Taiwan High Speed Rail • Dubai International Airport • Royal Festival Hall, London • Knott's Berry Farm, Los Angeles
- Oberoi Mall, Mumbai • Disneyland, Hong Kong • World Square Shopping Centre, Sydney • Eden Park Stadium, Auckland
- Bahrain City Centre • Aeropuerto International Benito Juarez, Mexico • Sun Atlantis Convention Center, Bahamas

Three Design-Integrated Collections

ConturaSeries

Improved ConturaSeries sets the bar for design innovation and quality. ConturaSeries towel dispensers now feature the new TowelMate paper saving system. TowelMate limits paper delivery to one towel at a time, eliminating towel bunching and waste. Saves 20% or more in paper towels used; preserving the environment and lowering operating costs.

Improved ConturaSeries waste bins now include LinerMate bag holders. LinerMate provides a neat, flush appearance with no unsightly bag overhang.

ConturaSeries is manufactured with satin-finish type 304 stainless steel.



Complimentary curvilinear 27° arcs, radii and reveals



Seamless monoform draws, flush locks, precise fit and finish



Flush-mounted, rectangular doors and openings



Consistent unidirectional grain, concealed flanges

TrimLineSeries

TrimLineSeries features a contemporary minimalist design and recessed mounting, manufactured with satin-finish type 304 stainless steel. The new low-profile TrimLineSeries warm air hand dryer visually complements the Series and supports inclusive design for Accessibility compliance.

TrimLineSeries features 90° angles on all exterior and interior corners and openings. Flanges are concealed for additional design simplicity.

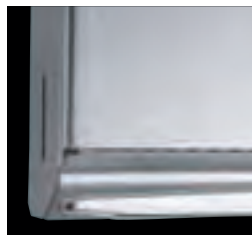
ClassicSeries™

A bevelled flange is the visual trademark of the ClassicSeries, the traditional standard for our most comprehensive selection of satin-finish type 304 stainless steel accessories. Newest amongst them is our automatic roll towel dispensers, available in surface-mounted, semi-recessed and modular towel/waste combination units.

ClassicSeries accessories feature satin-finish stainless steel throughout, whilst being engineered for the economic demands of price-sensitive projects.



Classic bevelled flanges, hemmed edges, piano hinges



Ideal for budget projects; standard for lasting durability



B-822 B-8221 B-82216 B-8226

B-822 Series ConturaSeries Counter-Mounted Soap Dispenser

Top-Filling Counter-Mounted Soap Dispensers

- For ease of maintenance and labour savings.
- Vandal-resistant locking cover and free-turning spout.
- Corrosion-resistant.
- Bright-polished spout, cover and escutcheon.
- High-impact-resistant ABS body and shank.
- Shatter-resistant polyethylene container.

	B-822	B-8221
Capacity (litres)	1.0	0.6
Spout Length (mm)	100	100
Maximum Mounting Thickness (mm)	100	25

	B-8226	B-82216
Capacity (litres)	1.0	0.6
Spout Length (mm)	150	150
Maximum Mounting Thickness (mm)	100	25



Notes:

1. Mount through 25mm diameter hole in counter.
2. Diameter of escutcheon: 50mm.
3. Maximum height from base of body to bottom of container: 370mm for B-822, B-8226; 210mm for B-8221, B-82216. Allow clearance below basin for 90mm diameter container.
4. Mount so end of spout extends over inner edge of bowl.

B-922 ConturaSeries Counter-Mounted Reservoir Soap Dispenser

Under-Counter Reservoir Soap System

- Eliminates frequent refilling of single soap dispensers, reducing maintenance time and labour costs; check and top-fill from any dispenser.
- Features B-822 Series soap dispensers with 914mm long supply tube which can be cut-to-size in the field.
- Equipped with 254mm long, translucent plastic elbow for visible soap level and 838mm flexible connector hose which can be cut-to-size in the field.
- Specify one unit for each basin; each providing 3.4L soap capacity, plus capacity of pipe connections.

	B-922	B-9226
Spout Length	100	150

Parts

B-922-45	ABS End Cap (set of 2 caps)
B-319586	Connecting Pipe





B-4112
ConturaSeries
Surface-Mounted Soap Dispenser

Corrosion-resistant valve dispenses commercially marketed all-purpose hand soaps. Container is satin-finish stainless steel. Capacity: 1.2L. Soap refill window. Concealed wall fastening. Hinged filler-top requires special key to open. Vandal resistant.

Width	178
Height	156
Depth Wall to Push-button	84
Accessibility Mounting Height	1245



B-4063
ConturaSeries
Recessed Soap Dispenser

Corrosion-resistant valve dispenses commercially marketed all-purpose hand soaps. Front of dispenser drawn, satin-finish stainless steel with covered, plastic soap vessel attached to back. Capacity: 1.5L. Soap refill window. Pulls out for filling and maintenance. Concealed locking device. Vandal resistant.

	Unit	Wall Opening
Width	185	149
Height	162	140
Recess	98	102
Projection Wall to Pushbutton	41	N/A
Accessibility Mounting Height	1245	1230



B-26607
TrimLineSeries
Surface-Mounted Liquid Soap Dispenser

Satin-finish stainless steel. Accepts liquid soap cartridges or bulk-fill soaps. Push activated with less than 22.2N. Capacity: 500ml. Concealed wall fastening. Hinged housing with key lock and soap refill window. Vandal resistant.

B-26617 Similar to B-26607, but with 1L capacity.

	B-26607	B-26617
Width (mm)	96	96
Height (mm)	298	337
Projection (mm)	153	153
Capacity (litres)	0.5	1
Accessibility Mounting Height (mm)	1380	1420



B-26627
TrimLineSeries
Surface-Mounted Foam Soap Dispenser

Satin-finish stainless steel. Accepts foam soap cartridges or bulk-fill foam soaps. Push activated with less than 22.2N. Capacity: 500ml. Concealed wall fastening. Hinged housing with key lock and soap refill window. Vandal resistant.

B-26637 Similar to B-26627, but with 1L capacity.

	B-26627	B-26637
Width (mm)	96	96
Height (mm)	298	337
Projection (mm)	153	153
Capacity (litres)	0.5	1
Accessibility Mounting Height (mm)	1380	1420



B-306
TrimLineSeries
Recessed Soap Dispenser

Satin-finish stainless steel. Door has 90° return, conceals flange. Enclosed plastic soap vessel on back of door. Swings open for easy filling. Full-length hinge and key lock secure door to cabinet. Capacity: 1.3L. Corrosion-resistant valve dispenses commercially marketed all-purpose hand soaps. Soap refill window.

	Unit	Wall Opening
Width	241	213
Height	140	111
Recess	97	98
Projection Wall to Pushbutton	76	N/A
Accessibility Mounting Height	1215	1195

Note: Bobrick stainless steel soap dispensers are not designed to dispense alcohol-based hand sanitisers or iodine-based surgical soaps. To help prevent corrosion and extend the service life of B-2111, B-2112, B-4112, and B-4063 soap dispensers, liquid soaps should be chloride free and pH-neutral.



B-2111
ClassicSeries
Surface-Mounted Soap Dispenser

Vertical tank is satin-finish stainless steel. Corrosion-resistant valve dispenses commercially marketed all-purpose hand soaps. Capacity: 1.2L. Soap refill window. Concealed wall fastening. Hinged filler-top requires special key to open. Vandal resistant.

Width	121
Height	206
Depth Wall to Pushbutton	89
Accessibility Mounting Height	1290



B-2112
ClassicSeries
Surface-Mounted Soap Dispenser

Horizontal tank is satin-finish stainless steel. Corrosion-resistant valve dispenses commercially marketed all-purpose hand soaps. Capacity: 1.2L. Soap refill window. Concealed wall fastening. Hinged filler-top requires special key to open. Vandal resistant.

Width	206
Height	121
Depth Wall to Push-button	89
Accessibility Mounting Height	1205



B-40
ClassicSeries
Surface-Mounted Soap Dispenser

Two-tone styling in black and grey. Corrosion-resistant valve dispenses commercially marketed all-purpose hand soaps. Vandal-resistant lid has unique keyless locking device. Lid pivots up after lock is disengaged for easy top filling. Translucent container provides visible soap level. Capacity: 1.2L. Concealed wall fastening. Unit is removable from wall for cleaning.

Width	148
Height	175
Depth Wall to Push-button	81
Accessibility Mounting Height	1270



B-155
ClassicSeries
Surface-Mounted LiquidMate™ Soap Dispenser

Bright-polished, chrome-plated ABS mounting bracket. Corrosion-resistant valve dispenses thin, free-flowing commercially marketed all-purpose hand soaps. Translucent polyethylene container provides visible soap level. 0.7L capacity.

Width	102
Height	194
Depth	105
Wall to Push-button	70
Accessibility Mounting Height	1285



B-8601
Panel-Mounted Soap Dispenser

Corrosion-resistant valve mounts into 18mm diameter hole through 32 to 51mm thick panel; projects 83mm. Dispenses liquid and lotion soaps, and synthetic detergents. Translucent, shatter-resistant polyethylene container mounts on opposite side of panel and feeds soap valve through supply tube. Capacity: 1.0L.



4112-79
Retrofit All-Purpose Soap Valve

Models B-4063, B-4112, B-2111, B-2112. Field-replaceable corrosion-resistant valve dispenses commercially marketed all-purpose hand soaps. Valve operates with less than 22.2N.

2111-79
SureFlo™ Retrofit Soap Valve

For Models B-2111 and B-306. Valve operates with less than 22.2N.





New



TowelMate Paper Towel Dispenser Accessory

TowelMate dispenses one towel at time, reducing towel usage and waste by 20% or more, eliminating towel bunching and multiple dispensing. TowelMates easily install in Bobrick and other manufacturers' similar dispensers.

Application	Part Number	Models
Bobrick ConturaSeries	3944-130	B-4362, B-43944, B-43949
	369-130	B-4262, B-4369, B-43699
Bobrick TrimLineSeries	3803-130	B-3803, B-38032, B-380349, B-38034
	39003-130	B-39003, B-390034, B-396034
	369-130	B-35903, B-36903
Bobrick ClassicSeries	3803-130	B-3900, B-3904, B-3907, B-3909
	3944-130	B-3914, B-3942, B-3944, B-3947, B-3949
	369-130	B-359, B-369, B-3699
	262-130	B-262, B-2620, B-2621, B-26212
Gamco and Other Manufacturers	3944-130	Similar dimensions 386 x 460 x 100mm
	262-130	Similar dimensions 275 x 355 x 100mm

Improved



B-43944 ConturaSeries Recessed Paper Towel Dispenser/Waste Bin with TowelMate and LinerMate

Satin-finish stainless steel. Flush key lock. Dispenses 600 C-fold or 800 multifold towels. Waste bin has 53.8L capacity. Removable front panel for easy cleaning.

B-43949 Similar to B-43944, but with stainless steel skirt for surface mounting.

	Unit		Wall Opening
	B-43944	B-43949	B-43944
Width	443	446	406
Height	1429	1432	1391
Recess	100	N/A	102
Projection	130	232	N/A
Accessibility Mounting Height	1555	1555	1530

Improved



B-4369 ConturaSeries Recessed Paper Towel Dispenser/Waste Bin with TowelMate and LinerMate

Satin-finish stainless steel. Flush key lock. Dispenses 350 C-fold or 475 multifold towels. Waste bin has 9.8L capacity. Removable front panel for easy cleaning.

B-43699 Similar to B-4369, but with stainless steel skirt for surface mounting.

	Unit		Wall Opening
	B-4369	B-43699	B-4369
Width	324	327	298
Height	711	714	676
Recess	100	N/A	102
Projection	64	168	N/A
Accessibility Mounting Height	1340	1340	1315



B-3803
TrimLineSeries
Recessed Paper Towel Dispenser/
Waste Bin

Satin-finish stainless steel. Door has 90° return, conceals flange. Dispenses 600 C-fold, 800 multifold or 1100 single-fold towels. Removable, leak-proof, 23.8L waste container.

B-38032 Similar to B-3803, but with 51mm stainless steel skirt for semi-recessing.

3803-100 Conversion Kit Adds cover to waste bin: models B-3803, B-38032 only.

B-38034 Similar to B-3803, but only dispenses C-fold and multifold towels. Waste capacity: 14.4L.

B-380349 Similar to B-38034, but with stainless steel skirt for surface mounting.

	Unit		Wall Opening	
	B-3803	B-38034	B-3803	B-38034
Width	330	330	292	292
Height	1400	1400	1362	1362
Recess	143	92	146	95
Projection	14	14	N/A	N/A
Accessibility Mounting Height	1545	1545	1520	1520



B-38033
TrimLineSeries
Recessed Paper Towel Dispenser/
Automatic Hand Dryer/
Waste Bin

Satin-finish stainless steel. Door has 90° return, conceals flange. Dispenses 450 C-fold, 600 multifold or 850 single-fold towels. Removable leak-proof, 12.5L waste container. Hand dryer: 220-240V AC, 7 Amp., 1500-1700 Watts, 50/60 Hz, Single Phase, VDE approved, CE marked and CCC approved.

815969 Similar to B-38033, but unit is narrower and taller.

	Unit		Wall Opening	
	B-38033	815969	B-38033	815969
Width	384	330	349	292
Height	1416	1829	1381	1794
Recess	143	143	146	146
Projection	14	14	N/A	N/A
Accessibility Mounting Height	1545	1740	1520	1740



B-39003
TrimLineSeries
Recessed Paper Towel
Dispenser/Waste Bin

Satin-finish stainless steel. Door has 90° return, conceals flange. Dispenses 600 C-fold, 800 multifold or 1100 single-fold towels. Removable, leak-proof, 45.4L waste container.

	Unit	Wall Opening
Width	437	406
Height	1422	1391
Recess	194	200
Projection	14	N/A
Accessibility Mounting Height	1535	1510



B-36903
TrimLineSeries
Recessed Paper Towel
Dispenser/Waste Bin

Satin-finish stainless steel. Door has 90° return, conceals flange. Dispenses 300 C-fold or 400 multifold towels. Removable, leak-proof, 6.1L waste container. Cabinet does not lock.

	Unit	Wall Opening
Width	330	292
Height	791	749
Recess	92	95
Projection	14	N/A
Accessibility Mounting Height	1295	1270

New



B-3974
ClassicSeries
Recessed Convertible Automatic
Roll Towel Dispenser/Waste Bin

Sensor-operated towel dispenser accepts non-proprietary roll paper towels 203mm diameter, 203mm wide, 244m long with 38 to 51mm diameter standard core. Accommodates stub roll up to 89mm diameter with automatic transfer. Battery or AC powered. Battery requirements: 4 Alkaline D Cells (not included). Removable waste bin is locked into cabinet. Bin is 205mm deep; extends 105mm from wall.

B-3979 Similar to B-3974, but with 100mm skirt for surface mounting.

B-39747 Similar to B-3974, but with 68.1L waste bin.

3974-57 AC External Adapter (6V) available for B-3974, B-3979, B-39747.

	Unit			Wall Opening	
	B-3974	B-3979	B-39747	B-3974	B-39747
Width	437	445	437	406	406
Height	1422	1430	1422	1391	1391
Recess	100	N/A	100	102	102
Projection	130	235	206	N/A	N/A
Accessibility Mount. Ht.	1536	1508	1536	1511	1511



B-3944
ClassicSeries
Recessed Convertible Paper Towel
Dispenser/Waste Bin

Unit includes folded paper towel module and 45.4L waste bin module which can be interchanged with an automatic or touch-free roll towel module and 68.1L waste bin module. Cabinet is not replaced when changing modules. Seamless, bevelled flange. Dispenses 600 C-fold or 800 multifold towels. Removable waste bin is locked into cabinet. Bin is 205mm deep.

B-3942 Similar to B-3944, but with a 51mm stainless steel skirt for semi-recessed mounting.

B-3947 Similar to B-3944, but with 68.1L waste bin.

B-3949 Similar to B-3944, but with 100mm stainless steel skirt for surface mounting.

	Unit				Wall Opening	
	B-3944	B-3942	B-3949	B-3947	B-3944/B-3947	B-3942
Width	437	443	443	437	406	406
Height	1422	1429	1429	1422	1391	1391
Recess	100		N/A	100	102	51
Projection	105	158	210	208	N/A	N/A
Accessibility Mount. Ht.	1537	1537	1511	1537	1511	1511



B-369
ClassicSeries
Recessed Paper Towel
Dispenser/Waste Bin

Satin-finish stainless steel. Seamless, bevelled flange. Dispenses 350 C-fold or 475 multifold towels. Knob-latch retains door. Removable waste bin has 7.6L capacity.

B-3699 Similar to B369, but with 100mm stainless steel skirt for surface mounting.

	Unit		Wall Opening
	B-369	B-3699	B-369
Width	356	362	321
Height	711	711	676
Recess	100	N/A	102
Projection	5	108	N/A
Accessibility Mounting Height	1310	1310	1285



B-3961
ClassicSeries
Recessed Convertible Paper Towel
Dispenser/Waste Bin

Unit includes touch-free roll towel module and 45.4L waste bin module which can be interchanged with an automatic or folded towel module and 68.1L waste bin module. Cabinet is not replaced when changing modules. Seamless, bevelled flange. Mechanism dispenses 305mm length per pull of non-proprietary roll paper towels. Accommodates 203mm wide, up to 203mm diameter rolls, 244m long, plus 89mm diameter stub roll with automatic transfer. Removable waste bin is locked into cabinet. Bin is 205mm deep.

B-39617 Similar to B-3961, but with 68.1L waste bin.

B-39619 Similar to B-3961, but with 100mm stainless steel skirt for surface mounting.

	Unit			Wall Opening	
	B-3961	B-39617	B-39619	B-3961	B-39617
Width	437	437	445	406	406
Height	1422	1422	1430	1391	1391
Recess	100	100	N/A	102	102
Projection	130	206	210	N/A	N/A
Accessibility Mounting Height	1537	1537	1508	1511	1511

New



3974-50
Convertible Semi-Recessed Automatic Roll Towel Dispenser Module

Satin-finish stainless steel. Accepts non-proprietary roll paper towels 203mm diameter, 203mm wide, 244m long with 38 to 51mm diameter standard core. Automatic transfer of stub roll up to 89mm diameter. Interchangeable module designed for installation in B-3944, B-3961 and other manufacturers' similar models.

Width	386
Height	464
Depth	230

3974-57 AC External Adapter (6V) available.



3944-52
Convertible Folded Towel Dispenser Module

Satin-finish stainless steel. Hemmed towel opening dispenses 600 C-fold or 800 multifold paper towels. Interchangeable module designed for installation in B-3961, B-3974 and other manufacturers' similar models.

Width	386
Height	529
Depth	230



3961-50
Convertible Touch-Free Pull-Towel Roll Paper Towel Dispenser

Satin-finish stainless steel. Accepts non-proprietary roll paper towels 203mm diameter, 203mm wide, 244m long with 38 to 51mm diameter standard core. Automatic transfer of stub roll up to 89mm diameter. Interchangeable module designed for installation in B-3944, B-3974 and other manufacturers' similar models.

Width	386
Height	464
Depth	230



367-60
Convertible Waste Bin Module

Satin-finish stainless steel with hemmed edges. 45.5L interchangeable module designed for installation in B-39747, B-3947, B-39617 and other manufacturers' similar models. Secured to cabinet with key lock.

Width	386
Height	584
Depth	203



368-60
Convertible Waste Bin Module

Satin-finish stainless steel with hemmed edges. 68.1L interchangeable module designed for installation in B-3974, B-3944, B-3961, B-3979, B-3942, B-3949, B-39619 and other manufacturers' similar models. Secured to cabinet with key lock.

Width	386
Height	584
Depth	308

New



LinerMate
Bin Liner Retainer Accessory

Improve the appearance of any washroom by ending unsightly bag overhang from disposable plastic bin liners. LinerMate facilitates quick and easy bag change-overs and eliminates the use of unsanitary vinyl liners.

Application	Part Number	Models
Bobrick ConturaSeries	43644-134	B-43644
	4369-134	B-4262, B-4369, B-43699
	43944-134	B-43944, B-43949
	3944-134	B-277
Bobrick ClassicSeries	3944-134	B-3644, B-3942, B-3944, B-3961, B-39619, B-3974, B-3949, B-3979
Gamco and Other Mfgs.	3944-134	45.4 litre bins (min. 376 x 539 x 175)



Improved



B-4262

ConturaSeries Surface-Mounted Paper Towel Dispenser with TowelMate

Satin-finish stainless steel. Top of cabinet equipped with key lock. Door swings down for loading towels. Dispenses 400 C-fold or 525 multifold towels. Cabinet slots indicate refill time.

Width	275
Height	337
Depth	119
Accessibility Mounting Height	1321

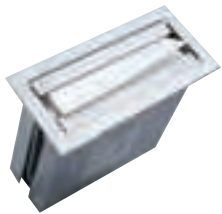


B-318

TrimLineSeries Concealed Paper Towel Dispenser

Satin-finish stainless steel. Dispenses 600 C-fold or 800 multifold towels. Towels load into bottom of cabinet concealed behind wall or mirror; only the towel tray is visible. Add 152mm to wall opening to provide minimum clearance space below towel tray. Add thickness of wall finish to wall opening depth.

	Unit	Wall Opening
Width	291	305
Height	457	464
Recess	109	114
Accessibility Mounting Height	1441	1441



B-526

TrimLineSeries Countertop-Mounted Recessed Paper Towel Dispenser

Satin-finish stainless steel. Flange has 90° return. Towels load into top of dispenser. Dispenses 300 C-fold or multifold towels. Mounts in countertops 19 to 38mm thick. Housing below countertop to conceal dispenser is not included.

	Unit	Countertop Opening
Width	324	311
Height	152	114
Recess	281	432
Projection	6	N/A



B-35903

TrimLineSeries Recessed Paper Towel Dispenser

Satin-finish stainless steel. Door has 90° return, conceals flange. Dispenses 300 C-fold or 400 multifold towels. Cabinet does not lock.

	Unit	Wall Opening
Width	330	292
Height	481	438
Recess	92	95
Projection	14	N/A
Accessibility Mounting Height	1321	1295

Improved



B-262

ClassicSeries Surface-Mounted Paper Towel Dispenser

Hemmed towel tray opening. Satin-finish stainless steel. Dispenses 400 C-fold or 525 multifold towels. Door has key lock and piano-hinge. Cabinet slots indicate refill time.

Width	273
Height	356
Depth	102
Accessibility Mounting Height	1372

New



TowelMate Paper Towel Dispenser Accessory

TowelMate dispenses one towel at a time, reducing towel usage and waste by 20% or more, eliminating towel bunching and multiple dispensing. TowelMates easily install in Bobrick and other manufacturers' similar dispensers. See page 10 for model compatibility.

New



B-2974
Automatic Surface-Mounted
Roll Towel Dispenser

Satin-finish stainless steel. Accepts non-proprietary roll paper towels 203mm diameter, 203mm wide, 244m long with 38 to 51mm diameter standard core. Automatic transfer of stub roll up to 89mm diameter. Door has key lock and piano-hinge. Battery requirements: 4 Alkaline D Cells (not included).

3974-57 AC External Adapter (6V) available.

Width	386
Height	464
Depth	230
Accessibility Mounting Height	1524-1676

New



B-29744
Automatic Semi-Recessed
Roll Towel Dispenser

Similar to B-2974 with seamless satin-finish stainless steel bevelled flange. Accepts non-proprietary roll paper towels 203mm diameter, 203mm wide, 244m long with 38 to 51mm diameter standard core. Automatic transfer of stub roll up to 89mm diameter. Battery requirements: 4 Alkaline D Cells (not included).

3974-57 AC External Adapter (6V) available.

	Unit	Wall Opening
Width	437	406
Height	514	479
Recess	100	102
Projection	130	N/A
Accessibility Mounting Height	1534	1511

New



B-72974
Automatic Surface-Mounted
Roll Towel Dispenser

Durable plastic construction; translucent navy cover. Locking cabinet. Accepts non-proprietary roll paper towels 203mm diameter, 203mm wide, 244m long with 38 to 51mm diameter standard core. Automatic transfer of stub roll up to 89mm diameter. Battery requirements: 4 Alkaline D Cells (not included).

3974-57 AC External Adapter (6V) available.

Width	310
Height	385
Depth	240
Accessibility Mounting Height	1295



B-2860
ClassicSeries
Surface-Mounted Roll Paper Towel Dispenser

Satin-finish stainless steel. Touch-free pull-towel mechanism dispenses 305mm length of non-proprietary roll paper towels. Accommodates 203mm wide, up to 203mm diameter rolls, 244m long. Automatic transfer of stub roll up to 89mm diameter. Pull force to operate: 8.0N. Door has key lock and piano-hinge.

Width	298
Height	381
Depth	229
Accessibility Mounting Height	1525-1675



B-359
ClassicSeries
Recessed Paper Towel Dispenser

Satin-finish stainless steel. Seamless, bevelled flange. Dispenses 350 C-fold or 475 multifold towels. Door equipped with full-length stainless steel piano-hinge at bottom; swings down for easy filling.

	Unit	Wall Opening
Width	324	286
Height	437	397
Recess	102	102
Projection	5	N/A
Accessibility Mounting Height	1321	1300



B-2621
ClassicSeries
Surface-Mounted Paper Towel Dispenser

Satin-finish stainless steel. Dispenses 200 C-fold or 275 multifold towels. Door has knob-latch.

Width	273
Height	181
Depth	102
Accessibility Mounting Height	1195



Improved



B-277
ConturaSeries
Surface-Mounted Waste Bin
with LinerMate

Satin-finish stainless steel. Capacity: 48.3L. Top edges are hemmed and bottom of waste bin has recessed finger grip for safe handling.

Width	384
Height	584
Depth	216

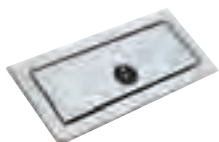
Improved



B-43644
ConturaSeries
Recessed Waste Bin
with LinerMate

Satin-finish stainless steel. Removable front panel for easy cleaning. Capacity: 42.4L.

	Unit	Wall Opening
Width	440	403
Height	705	667
Recess	100	102
Projection	130	N/A



B-527
TrimLineSeries
Recessed Countertop Waste-Disposal Door

Satin-finish stainless steel. Door is self-closing. Flange has 90° return. Mounts in counters 19 to 38mm thick. 115mm minimum clearance below mounting surface is required. Waste bin and housing below counter to conceal bin are not included.

	Unit	Countertop Opening
Width	324	286
Height	152	115
Recess	52	115
Projection	6	N/A



B-532
TrimLineSeries
Circular Waste Chute

Satin-finish stainless steel. Flat flange suitable for counter, recessed, or under-counter installation. Provides access to under-counter waste bin (not included).

B-529 Circular Waste Chute

Bright-polished stainless steel. Rolled flange. Provides access to under-counter waste bin (not included).

	Unit		Countertop Opening	
	B-532	B-529	B-532	B-529
Outer Dia.	173	176	N/A	N/A
Inner Dia.	151	140	156	143
Recess	98	116	N/A	N/A
Projection	0.8	11	N/A	N/A



B-3644
ClassicSeries
Recessed Waste Bin

Satin-finish stainless steel. Seamless, bevelled flange. Removable 45.4L bin locks into cabinet. Hooks hold optional vinyl liner.

	Unit	Wall Opening
Width	437	406
Height	778	743
Recess	102	102
Projection	105	N/A



B-279
ClassicSeries
Surface-Mounted Waste Bin

Satin-finish stainless steel. Bottom edges hemmed for maximum safety. Hooks hold furnished reusable vinyl liner; removable for servicing. Capacity: 24.2L.

Width	356
Height	457
Depth	152

New



LinerMate
Bin Liner Retainer Accessory

Improve the appearance of any washroom by ending unsightly bag overhang from disposable plastic bin liners. LinerMate facilitates quick and easy bag change-overs.

Application	Part Number	Models
Bobrick ConturaSeries	43644-134	B-43644
	4369-134	B-4262, B-4369, B-43699
	43944-134	B-43944, B-43949
	3944-134	B-277
Bobrick ClassicSeries	3944-134	B-3644, B-3942, B-3944, B-3961, B-39619, B-3974, B-3949, B-3979
Gamco and Other Mfgs.	3944-134	45.4 litre bins (min. 376 x 539 x 175)



B-275
ClassicSeries
Surface-Mounted Waste Bin

Satin-finish stainless steel. Bottom edges hemmed for maximum safety. Hooks hold furnished reusable vinyl liner; removable for servicing. Capacity: 75.7L.

Width	419
Height	584
Depth	318



B-2250
ClassicSeries
Floor-Standing Waste Bin with Top

Satin-finish stainless steel. Top with self-closing doors. Vinyl wall bumper, rubber feet. Hooks for liners. Capacity: 49.2L.

Width	318
Height	749
Depth	318



B-2280
ClassicSeries
Floor-Standing Open-Top
Waste Bin

Satin-finish stainless steel. Open top. Vinyl wall bumper, rubber feet. Hooks for liners. Capacity: 79.5L.

	B-2280	B-2260
Width	356	318
Height	356	318
Depth	762	559

B-2260 Similar to B-2280, but with 49.2L capacity.



B-2300
Floor-Standing Dome Top
Waste Bin

Satin-finish stainless steel body with black steel-domed top. Removable top with fingerprint-resistant, textured powder coated finish has 152mm diameter opening for hygienic, no-touch disposal of waste. Galvanised steel liner has grommets lift holes. Capacity: 68.1L.

Diameter	381
Height	787



B-2400
Floor-Standing Large Capacity
Waste Bin

Satin-finish stainless steel. Removable funnel top with 210mm diameter opening for hygienic, no-touch disposal of waste. Four heavy-duty rubber feet. Galvanised steel waste container has handle for easy removal. Capacity: 125L.

Diameter	464
Height	813





New



B-7128 TrimLineSeries Surface-Mounted Hand Dryer

Durable, 1.2mm (18-gauge), type 304 satin-finish stainless steel cover with black plastic trim, automatic sensor, dual air outlets. 10-year limited warranty.

B-7120 Similar to B-7128 but with durable, 0.8mm (22-gauge), zinc-plated steel with white epoxy cover and black plastic trim.

Width	350
Height	345
Depth	100



B-715/B-715E Elan™ Surface-Mounted Hand Dryer

Contemporary styling, satin-finish type 304 stainless steel cover. Automatic hand sensor. 5-year limited warranty.

Width	295
Height	279
Depth	141



B-740 Eclipse™ Surface-Mounted Hand Dryer

Contemporary styling, durable, drawn steel white vitreous-enamel cover. Automatic hand sensor. 10-year limited warranty.

B-748 Similar to B-740 but with drawn-steel bright-polished chrome-plated cover.

Width	383
Height	225
Depth	192





B-700
Aircraft™
Surface-Mounted Hand Dryer

Cast iron with white vitreous-enamel cover.
Automatic hand sensor. 10-year limited warranty.

Width	349
Height	264
Depth	184



B-750
Aircraft™
Recessed Hand Dryer

Cast iron with white vitreous-enamel cover.
Automatic hand sensor. 10-year limited warranty.

	Unit	Wall Opening
Width	387	349
Height	302	241
Recess	90	95
Projection	102	N/A



B-710/B-710E
Compac™
Surface-Mounted Hand Dryer

One-piece, grey moulded plastic cover. Automatic hand sensor. 1-year limited warranty.

Width	275
Height	278
Depth	132

Electrical Specifications

B-700 115V AC, 20 Amp, 2300 Watts, 50/60 Hz. All Models cULus Listed.
B-750 208-240V AC, 9-10 Amp, 1900-2400 Watts, 50/60 Hz. All models cULus Listed, VDE approved, CE Marked and CCC approved.

B-710E 220-240V AC, 7 Amp, 1500-1700 Watts, 50/60 Hz. VDE approved, CE marked.
B-715E

B-710 115V AC, 15 Amp, 1725 Watts, 60 Hz. cULus Listed.
B-715

B-740 115V AC, 20 Amp, 2300 Watts, 50/60 Hz. All models cULus Listed.
B-748 208-240V AC, 9-10 Amp, 1900-2400 Watts, 50/60 Hz. All models cULus Listed, VDE approved, CE Marked and CCC approved.

B-7128 115V AC, 15 Amp, 1725 Watts, 50/60 Hz. All Models cULus Listed.
B-7120 208-240V AC, 6.8-7.8 Amp, 1400-1900 Watts, 50/60 Hz. All models cULus Listed, VDE approved and CE Marked.

How to Order: Specify voltage by adding **115V** or **230V** following model number. Example **B-700 115V**.

Notes: Bobrick automatic hand dryers should be installed 380mm above any projection or horizontal surface which may interfere with the operation of the automatic sensor.

Model B-710 is not designed for vandal-prone locations. For vandal-prone locations, use Bobrick B-700 or B-750 AirCraft Dryers with cast-iron vitreous-enamel cover, B-740 Eclipse Dryer with drawn steel, vitreous-enamel cover or B-7128 TrimLineSeries Dryer with satin-finish stainless steel cover.



KB110-SSRE-INB
Koala Kare™ Horizontal, Recessed
Baby Changing Station

Satin-finish stainless steel exterior with grey polyethylene interior. Smooth, concave changing bed with safety straps, liner dispenser, bag hooks and moulded instructions.

KB110-SSWM-INB Similar to KB110-SSRE-INB but wall-mounted.

	Unit KB110- SSRE-INB	Unit KB110- SSWM-INB	Wall Opening KB110- SSRE-INB
Width	940	892	900
Height	584	508	521
Recess	108	N/A	108
Projection, Closed	6	102	N/A
Projection, Open	387	483	N/A
Recommended Mounting Height	1181	1181	1181



KB111-SSRE-INB
Koala Kare Vertical, Semi-Recessed
Baby Changing Station

Satin-finish stainless steel exterior with grey polyethylene interior. Smooth, concave changing bed with safety straps, liner dispenser, bag hooks and moulded instructions.

KB111-SSWM-INB Similar to KB111-SSRE-INB but wall-mounted.

	Unit KB111- SSRE-INB	Unit KB111- SSWM-INB	Wall Opening KB111- SSRE-INB
Width	616	565	562
Height	1003	902	905
Recess	102	N/A	102
Projection, Closed	38	133	N/A
Projection, Open	794	889	N/A
Recommended Mounting Height	1591	1499	



New

KB200-00
Koala Kare Horizontal, Wall-Mounted
Baby Changing Station

Cream polypropylene with heavy-duty 6-point mounting which supports 91kg with virtually no deflection from 90°. Concealed hardware, dual bed liner dispensers and bag hooks. Also in grey (-01), white granite (-05) and earth (-11).

KB200-00-INB Similar to KB200-00, but packaged for EN Compliance.

Width	889
Height	565
Projection, Closed	102
Projection, Open	583
Recommended Mounting Height	1124





KB100-00ST-INB
Koala Kare Horizontal, Recessed Baby Changing Station with Stainless Steel Flange

Cream polyethylene. Smooth, concave changing bed with safety straps, integral liner dispenser, bag hooks and moulded instructions, including Braille. Also in grey (-01) and white granite (-05).

	Unit	Wall Opening
Width	940	900
Height	584	521
Recess	N/A	108
Projection, Open	387	N/A
Recommended Mounting Height	1181	



KB101-00-INB
Koala Kare Vertical, Wall-Mounted Baby Changing Station

Cream polyethylene. Smooth, concave changing bed with safety straps, integral liner dispenser, bag hooks and moulded instructions, including Braille. Also in grey (-01) and white granite (-05).

Width	559
Height	902
Projection, Closed	133
Projection, Open	889
Recommended Mounting Height	1499



KB102-00-INB
Koala Kare Wall-Mounted Child Protection Seat

Cream polyethylene. Mounts on wall or partition of toilet compartment. Contoured seat with textured surface. Safety straps extend over child's shoulders and between legs for security.

Width	311
Height	476
Projection, Closed	143
Projection, Open	311
Recommended Mounting Height	Bottom of unit 51mm above bottom of partition panel; or 356mm above floor.



KB150-99-INB
Koala Kare Baby Changing Station Bed Liners

Disposable liners for use with Baby Changing Stations above. Large 343mm W x 457mm H, 3-ply biodegradable. 500 liners per case.



Microban™ antibacterial product protection: a Koala Baby Changing Station exclusive.

Microban technology is built into Koala Baby Changing Stations and becomes an intrinsic part of the Station. When microbes, such as bacteria, mould and mildew that can cause stains, odours and product deterioration come into contact with the station surface, Microban protection penetrates the cell wall of the microbe and disrupts key cell functions so that the microbe cannot function, grow or reproduce. Microban helps Koala Baby Changing Stations stay cleaner between cleanings. Please see Microban Technical Bulletin, TB-12.

Notes:

1. All Baby Changing Stations feature steel-on-steel hinges with 3.2mm steel mounting supports.
2. Complies with EN 12221-1/-2 European Standards (KB200-INB only), ANSI S117.1 Accessible and Usable Buildings and Facilities, ASTM F2285-04 (formerly ASTM PS125) Standard Consumer Safety Performance Specification for Diaper Changing Tables for Commercial Use, ASTM G21 Antifungal and ASTM G22 Antibacterial Standards, ADA Accessibility Standards for height, reach, projection, operation when correctly installed.
3. All Baby Changing Station models equipped with built-in Sanitary Bed Liner Dispensers. Liners sold separately.



The Cubicle Collection Contemporary Elegance and Functionality

This suite of products adds style and convenience to any bathroom or toilet cubicle.

Contemporary minimalist styling, uniform design elements and solid stainless steel construction deliver both good looks and rugged durability. Sustainably manufactured using recycled and recyclable stainless steel to help preserve the environment.



B-543 Toilet Tissue Dispenser
Page 25



B-542 Coat Hook
Page 30



B-541 Spare Toilet Roll Holder
Page 25



B-544 Toilet Brush Holder
Page 31



B-4288
ConturaSeries
Surface-Mounted Multi-Roll Toilet Tissue Dispenser

Satin-finish stainless steel unit with stainless steel dispensing mechanism. Flush key lock. Holds two rolls up to 133mm diameter (1800 sheets). Extra roll automatically drops in place when bottom roll is depleted. Theft-resistant, heavy-duty spindles.

Width	154
Height	279
Depth	151
Accessibility Mounting Height	710



B-4388
ConturaSeries
Recessed Multi-Roll Toilet Tissue Dispenser

Satin-finish stainless steel unit with stainless steel dispensing mechanism. Flush key lock. Holds two rolls up to 133mm diameter (1800 sheets). Extra roll automatically drops in place when bottom roll is depleted. Theft-resistant, heavy-duty spindles.

	Unit	Wall Opening
Width	192	159
Height	318	286
Recess	81	83
Projection	70	N/A
Accessibility Mounting Height	730	710



B-2888
ClassicSeries
Surface-Mounted Multi-Roll Toilet Tissue Dispenser

Satin-finish stainless steel unit with stainless steel dispensing mechanism. Door has flat face with protruding key lock. Holds two rolls up to 133mm diameter (1800 sheets). Extra roll automatically drops in place when bottom roll is depleted. Theft-resistant, heavy-duty spindles.

Width	154
Height	279
Depth	151
Accessibility Mounting Height	710



B-3888
ClassicSeries
Recessed Multi-Roll Toilet Tissue Dispenser

Satin-finish stainless steel unit with stainless steel dispensing mechanism. Door has flat face with protruding key lock. Holds two rolls up to 133mm diameter (1800 sheets). Extra roll automatically drops in place when bottom roll is depleted. Theft-resistant, heavy-duty spindles.

	Unit	Wall Opening
Width	192	159
Height	318	286
Depth	81	83
Recess	70	N/A
Accessibility Mounting Height	730	710

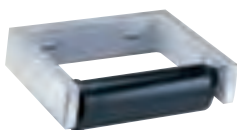


B-272
ClassicSeries
Surface-Mounted Toilet Tissue Cabinet

Satin-finish stainless steel. Equipped with key lock; vandal-resistant. Dispenses either single or doublefold toilet tissue. Large capacity: 1330 singlefold tissues up to 152mm long. Slots in cabinet indicate refill time.

B-2721 Similar to B-272, with larger cabinet for single-fold tissue lengths 190mm or greater (fold-depth 95mm+).

	B-272	B-2721
Width	127	129
Height	227	230
Depth	76	109



B-273
ClassicSeries
Surface-Mounted Toilet Tissue Dispenser

Heavy-duty cast aluminium, satin finish. High-impact plastic spindles have concealed locking device. Holds one roll up to 152mm diameter (2000 sheets). Controlled delivery.

B-2730 Similar to B-273, without controlled delivery.

B-274 Similar to B-273, holds two rolls. Controlled delivery.

B-2740 Similar to B-274, without controlled delivery.

	B-273	B-274
Width	165	318
Height	38	38
Depth	125	125



B-386
ClassicSeries
Partition-Mounted Multi-Roll Toilet Tissue Dispenser (Serves Two Toilet Compartments)

Satin-finish stainless steel. Mounts centred through toilet partitions; accessible from both sides. Holds four standard core toilet tissue rolls up to 130mm diameter; two for each side. Chrome-plated plastic spindles with heavy-duty internal springs.

	Unit	Partition Opening
Width	324	292
Height	306	276
Partition Thickness	13-51	N/A
Projection	19-44	N/A
Accessibility Mounting Height	718	699



B-6699
Surface-Mounted Toilet Tissue Dispenser with Hood

Bright-polished stainless steel. Hood protects paper. Chrome-plated plastic spindle holds rolls up to 130mm diameter (1500 sheets).

B-66997 Similar to B-6699, but with satin finish.

Width	157
Height	157
Depth	121



B-6999
Surface-Mounted Toilet Tissue Dispenser with Hood for Two Rolls

Bright-polished stainless steel. Hoods protect paper. Chrome-plated plastic spindles hold rolls up to 130mm diameter (1500 sheets).

B-69997 Similar to B-6999, but with satin finish.

Width	314
Height	157
Depth	121



B-699
Recessed Toilet Tissue Dispenser with Hood for Two Rolls

Bright-polished stainless steel. Hoods protect paper. Chrome-plated plastic spindles hold rolls up to 130mm diameter (1500 sheets).

B-6997 Similar to B-699, but with satin finish.

	Unit	Wall Opening
Width	313	298
Height	157	133
Recess	48	86
Projection	70	N/A



B-685
Surface-Mounted Toilet Tissue Dispenser for Single Roll

Bright-polished stainless steel. Support arm flanges lock to concealed stainless steel wall plate. Chrome-plated plastic spindle holds rolls up to 140mm diameter (1800 sheets).

B-6857 Similar to B-685, but with satin finish.

B-7685 Similar to B-685.

B-76857 Similar to B-7685, but with satin finish.

Width	184
Height	51
Depth	100



B-686
Surface-Mounted Toilet Tissue Dispenser for Two Rolls

Bright-polished stainless steel. Support arm flanges lock to concealed stainless steel wall plate. Chrome-plated plastic spindles hold rolls up to 140mm diameter (1800 sheets).

B-6867 Similar to B-686, but with satin finish.

B-7686 Similar to B-686.

B-76867 Similar to B-7686, but with satin finish.

Width	318
Height	51
Depth	100



B-541
Cubicle Collection
Spare Toilet Roll Holder

Satin-finish stainless steel. Threaded flange conceals mounting plate, provides snug fit to the wall. Vertical post accommodates one roll up to 127mm diameter and a core size from 19mm to 38mm. See page 22 for more information.

Flange Width	50
Height	202
Depth	88



B-543
Cubicle Collection
Surface-Mounted Toilet Tissue Dispenser for Single Roll

Satin-finish stainless steel. Threaded flange conceals mounting plate, provides snug fit to the wall. Accepts standard-core size from 19mm - 38mm and 102mm wide. See page 22 for more information.

Width	140
Height	115
Depth	33



B-27313
ClassicSeries
Surface-Mounted Three Roll Toilet Tissue Dispenser

Satin-finish stainless steel. Holds three toilet tissue rolls up to 114mm diameter. Extra rolls drop into place when bottom roll is finished.

Width	117
Height	378
Depth	127
Accessibility Mounting Height	710



B-2890
Surface-Mounted Single Jumbo Roll Toilet Tissue Dispenser

Satin-finish type 430 stainless steel. Equipped with spring lock. Spindle holds one 254mm diameter roll with 76mm diameter core. Convertible for 55mm and 41mm diameter core rolls. Powder-coated mounting plate. Slot in door reveals tissue supply.

Diameter	270
Depth	114



B-2892
Surface-Mounted Twin Jumbo Roll Toilet Tissue Dispenser

Satin-finish stainless steel. Equipped with key lock. Spindles hold two 254mm diameter rolls with 57mm diameter core rolls; convertible for 76mm diameter core rolls. Sliding access panel exposes one roll at a time, allows easy roll change-over. Wide viewing slot in door. Quick reloading.

Width	529
Height	289
Depth	135



283-604
Theft-Resistant Spindle

Fits B-386, B-685, B-686, B-699, B-6699, B-6857, B-6867, B-6997, B-6999, B-7685, B-7686, B-66997, B-69997, B-76857, B-76867.

NOTE: Theft-resistant spindle(s) is(are) interchangeable on all models which use the 283-504 chrome-plated plastic spindle.

Moulded plastic spindle with concealed locking feature is available as an option or replacement part. After rolls are depleted, spindle is removed with special key furnished.

2733-103
Theft-Resistant Spindle

Moulded plastic spindle suitable for European cores 42mm. Available as a new or replacement part.

NOTE: Units designed for controlled delivery use the same spindle as those without this feature. Changing the spindle does not change the unit to controlled or non-controlled.



Fits B-273, B-274, B-2730, B-2740.

- Clearance between wall and grab bar is 38mm.
- Constructed of satin-finish stainless steel tubing in 32mm and 38mm diameters; concealed or exposed mounting.
- Peened non-slip gripping surface available on all Series. Add suffix .99 to model number.
- Bar 1.2mm (18-gauge), type 304 stainless steel.
- Bar passes through flange and is heliarc welded to form single structural unit.
- Comply with structural strength requirements: grab bars that provide 38mm clearance from the wall can support loads in excess of 408kg when properly installed.
- Mandrel bending process ensures uniform bar diameter around curves.
- All joints and supports are contour-cut and welded.
- Concealed anchors and fasteners available as an optional accessory.



Concealed Mounting

- Cover snaps over mounting flange to conceal screws.
- Concealed mounting flange 3mm thick, type 304 stainless steel plate, 51mm wide x 79mm high, with screw holes for concealed anchors.
- Cover is 0.8mm (22-gauge), type 304 stainless steel with satin finish, 83mm diameter.

Series	Diameter	*Finish
*B-6806	38	Satin Finish
*B-5806	32	Satin Finish

*Peened non-slip gripping surface available. Add suffix .99 to model number.



B-6806 Straight Grab Bar

Satin-finish stainless steel grab bar for bath/shower/toilet compartment. Snap flange.

B-6806.99 Similar to B-6806, but with peened non-slip grip.

	B-6806	B-6806.99
Bar Diameter	38	38
Length	305	N/A
	457	457
	610	610
	762	762
	914	914
	1067	1067
	1219	



B-6861 Two-Wall Horizontal Grab Bar

Satin-finish stainless steel grab bar for 914 x 914mm shower compartments. Snap flange.

B-6861.99 Similar to B-6861, but with peened non-slip grip.

Bar Diameter	38
Width	403
Length	784



B-68616 Two-Wall Horizontal Grab Bar

Satin-finish stainless steel grab bar for bath/shower/toilet compartment. Snap flange.

B-68616.99 Similar to B-68616, but with peened non-slip grip.

Bar Diameter	38
Width	610
Length	914



B-68137 Two-Wall Horizontal Grab Bar

Satin-finish stainless steel grab bar for bath/shower/toilet compartment. Snap flange.

B-68137.99 Similar to B-68137, but with peened non-slip grip.

Bar Diameter	38
Width	914
Length	1372



B-5806
Straight Grab Bar

Satin-finish stainless steel grab bar for bath/shower/toilet compartment. Snap flange.

B-5806.99 Similar to B-5806, but with peened non-slip grip.

Bar Diameter	32
Length	457
	610
	762
	914
	1067



B-58616
Two-Wall Horizontal Grab Bar

Satin-finish stainless steel grab bar for bath/shower/toilet compartment. Snap flange.

B-58616.99 Similar to B-58616 but with peened non-slip grip.

Bar Diameter	32
Width	610
Length	914



B-4998
Wall-Mounted Swing-Up Grab Bar

Satin-finish stainless steel grab bar for tub/shower/toilet compartment. Exposed mounting.

B-4998.99 Similar to B-4998, but with peened non-slip grip.

Bar Diameter	32
Length	737



B-5181
Surface-Mounted Reversible Folding Shower Seat

Seat is constructed of durable, water-resistant, ivory-coloured, 13mm thick compact grade laminate. Reversible for left- or right-hand field installation. Frame and mounting brackets are type 304 stainless steel with self-locking mechanism. Supports up to 163kg when correctly installed. Left-handed seat shown.

Width	838
Projection, Closed	140
Projection, Open	567
Typical Mounting Height	430-485



B-5191
Surface-Mounted Folding Shower Seat

Compact design. Seat is constructed of durable, water-resistant, ivory-coloured, 8mm thick compact grade laminate. Frame and mounting bracket are type 304 stainless steel and feature self-locking mechanism. Supports up to 204kg when correctly installed.

Width	457
Projection, Closed	140
Projection, Open	402
Typical Mounting Height	430-485



B-290 Series Welded-Frame Mirrors

- One-piece, roll-formed 19 x 19mm angle-frame • Type 304 stainless steel angle with satin finish • Corners heliarc welded, ground and polished smooth • Bevelled frame edge at mirror for improved appearance • No. 1 quality, 6mm glass mirror; warranted against silver spoilage for 15 years • Galvanised steel back • Secured to concealed wall hanger with theft-resistant mounting

Model No.	W	H	Model No.	W	H
B-290 1830	46cm	76cm	B-290 2448	61cm	122cm
B-290 1836	46cm	91cm	B-290 2460	61cm	152cm
B-290 2430	61cm	76cm	B-290 2472	61cm	183cm
B-290 2436	61cm	91cm			

B-292 Series Welded-Frame Mirror/Shelf Combination

- Same mirror as B-290 Series • Type 304 satin-finish stainless steel shelf
- Shelf projects 127mm, with 19mm return on front and sides; front return edge hemmed for rigidity and safety • Shelf corners heliarc welded, ground and polished smooth

Model No.	W	H	Model No.	W	H
B-292 1830	46cm	76cm	B-292 2436	61cm	91cm
B-292 1836	46cm	91cm			

Special-Order Custom Size B-290 and B-292 Series Mirrors

B-290 Maximum size of one piece of mirror: 366 x 183cm. Maximum frame size available: 457 x 183cm with two pieces of glass.

B-292 Maximum frame size available: 244 x 183cm with one piece of glass. Maximum size of shelf: 244cm furnished as one piece.

To specify special sizes, use Series No. followed by width and height in inches.



B-165 Series Channel-Frame Mirrors

- One-piece, 13 x 13 x 13mm channel-frame • Type 430 stainless steel with bright polished finish • Mitred corners • Frame screw permits easy replacement of glass • No. 1 quality, 6mm glass mirror warranted against silver spoilage for 15 years • Galvanised steel back • Secured to concealed wall hanger with theft-resistant mounting

Model No.	W	H	Model No.	W	H
B-165 1824	46cm	61cm	B-165 2448	61cm	122cm
B-165 1830	46cm	76cm	B-165 2460	61cm	152cm
B-165 1836	46cm	91cm	B-165 4836	122cm	91cm
B-165 2430	61cm	76cm			
B-165 2436	61cm	91cm			

Special-Order Custom Size B-165 Series Mirrors

Maximum size mirror: 183 x 152cm. To specify special sizes, use Series Number followed by width and height in inches.

B-166 Series Channel-Frame Mirror/Shelf Combination

- Same mirror as B-165 Series • Type 304 satin-finish stainless steel shelf
- Shelf projects 127mm with 10mm return on front and sides; front return edge hemmed for rigidity and safety

Model No.	W	H	Model No.	W	H
B-166 1824	46cm	61cm	B-166 1836	46cm	91cm
B-166 1830	46cm	76cm	B-166 2436	61cm	91cm

Special-Order Custom Size B-166 Series Mirrors

Maximum size mirror: 61 x 152cm. Maximum shelf length: 61cm. To specify special sizes, use Series Number followed by width and height in inches.





B-2908 Series

B-1658 Series

Standard Size Tempered Glass Mirrors

Tempered glass mirrors are engineered for heavy-traffic, vandal-prone bathrooms in stadiums, outdoor recreation centres and low-supervision facilities such as parks and public toilets.

Tempered glass mirrors resist breakage and provide a measure of safety from broken glass, but differ in colour and reflective quality from standard glass mirrors. Bobrick uses the highest quality tempered glass mirrors. Modest distortion or heat-generated markings are normal in the tempered glass mirror manufacturing process. Therefore, Bobrick will not accept returns of tempered glass mirrors with random distortion or markings.

B-2908 Series

Standard Size Tempered Glass Welded-Frame Mirrors

- Same frame as B-290 Series • 6mm tempered glass mirror

Model No.	W	H
B-2908 1830	46cm	76cm
B-2908 1836	46cm	91cm
B-2908 2436	61cm	91cm

B-1658 Series

Standard Size Tempered Glass Channel-Frame Mirrors

- Same frame as B-165 Series • 6mm tempered glass mirror

Model No.	W	H
B-1658 1830	46cm	76cm
B-1658 2436	61cm	91cm



B-293

B-294

B-293 Series

Fixed-Position Tilt Mirrors

Provide visibility for wheelchair patients. Frame is type 304 stainless steel, satin finish. Bevelled edges of frame hug mirror; provides gapless fit for improved appearance, and safety when cleaning mirror. No. 1 quality, 6mm glass mirror electrolytically copper-plated. Mirror extends 102mm from wall at top and tapers to 25mm at bottom.

Model No.	W	H	Model No.	W	H
B-293 1630	41cm	76cm	B-293 1836	46cm	91cm
B-293 1830	46cm	76cm	B-293 2436	61cm	91cm

Special-Order Custom Size B-293 Series Mirrors

Maximum size mirror: 91 x 122cm.

B-294 Series

Angle-Frame Two Position Tilt Mirror

Tilt forward to provide full visibility for wheelchair patients or return to upright position. Frame is 19 x 19mm, type 304 stainless steel angle, satin finish. Bevelled edges of frame hug mirror; provides gapless fit for improved appearance, and safety when cleaning mirror. No. 1 quality, 6mm glass mirror electrolytically copper-plated. Top of mirror tilts 178mm from wall with self-locking mechanisms; bottom of mirror mounts to wall with full-length stainless steel hinge.

Model No.	W	H
B-294 1630	41cm	76cm

Special-Order Custom Size B-294 Series Mirrors

Maximum size mirror: 61 x 91cm.

Special-Order Reflective Surfaces

Polished Stainless Steel, Tempered and Laminated Glass Mirrors resist breakage and provide a measure of safety from broken glass, but differ in colour and reflective quality from standard glass mirrors. Modest distortion is normal and not a returnable condition. Available on special order.

Polished Stainless Steel

- B-1656 Series Mirrors (up to 183 x 61cm)
- B-2906 Series Mirrors (up to 183 x 61cm)

Tempered Glass

- B-1658 Series Mirrors (up to 183 x 122cm)
- B-2908 Series Mirrors (up to 305 x 122cm)

Laminated Glass

- B-1659 Series Mirrors (up to 183 x 122cm)
- B-2909 Series Mirrors (up to 245 x 122cm)

Notes:

1. To specify mirrors, use Series Number desired followed by width, then height in inches.
2. Framed mirrors are manufactured to overall dimensions, as shown in all mirror tables on pages 28 and 29.
3. Overall height of mirror/shelf models includes shelf.
4. Framed mirrors must be installed with width and height dimensions as ordered.
5. Mirror back and wall hanger cannot be installed sideways to reverse width and height dimensions.
6. Provide minimum 19mm clearance at top of mirror for mounting on wall hanger and 25mm clearance on each side.



B-297 Surface-Mounted Medicine Cabinet

All-steel cabinet and two fixed shelves with baked white enamel finish. Mirror: No. 1 quality, 3mm glass electrolytically copper-plated. Door has enamelled steel piano-hinge and magnetic catch.

B-397 Recessed Medicine Cabinet Similar to B-297 for recessed installation. Three adjustable plastic shelves.

	Unit		Wall
	B-297	B-397	Opening B-397
Width	359	403	356
Height	514	657	600
Depth	95	83	89
Projection	N/A	25	N/A
Accessibility Mounting Height	1525	1665	1640



B-299 Surface-Mounted Medicine Cabinet

Type 304 stainless steel, satin finish. Mirror: No. 1 Quality, 6mm glass electrolytically copper-plated. 15-year guarantee against silver spoilage. Door has full-length stainless steel piano-hinge, magnetic catch and cable doorstop. Four adjustable stainless steel shelves. Cabinet may be inverted for right- or left-hand door swing.

B-398 Recessed Medicine Cabinet Similar to B-299 for recessed installation.

	Unit		Wall
	B-299	B-398	Opening B-398
Width	432	432	387
Height	683	683	648
Depth	127	87	92
Projection	N/A	45	N/A
Accessibility Mounting Height	1690	1690	1675



B-8397 Surface-Mounted Facial Tissue Dispenser

Cabinet type 304 stainless steel, satin finish. Equipped with concealed locking device; opens with key provided. Concealed wall plate is 0.8mm (22-gauge), type 304 stainless steel. 260mm wide, 132mm high; projects 57mm from wall. Dispenses one pack of 100 two-ply facial tissues. Tissues not supplied.



B-542 Cubicle Collection Coat Hook

Satin-finish stainless steel. Threaded flange conceals mounting plate, provides snug fit to the wall. Flange has 50mm diameter. Projects 33mm from wall. See page 22 for more information.



B-672 Surface-Mounted Double Coat Hook

Bright-polished stainless steel. Contoured 102mm wide bar forms hook at each end. Flange is 51 x 51mm. Projects 59mm from wall.

B-6727 Similar to B-672, but with satin finish.
B-7672 Similar to B-672. Projects 49mm from wall.
B-76727 Similar to B-7672, but with satin finish.



B-682 Surface-Mounted Hat and Coat Hook

Bright-polished stainless steel. Flange is 51 x 51mm. Hook 25mm wide, 165mm high; projects 80mm from wall.

B-6827 Similar to B-682, but with satin finish.



B-677
Surface-Mounted Towel Pin

Bright-polished stainless steel. Flange is 51 x 51mm. Projects 86mm from wall.

B-6777 Similar to B-677, but with satin finish.



B-211
Surface-Mounted Heavy-Duty Clothes Hook
with Exposed Mounting

One-piece brass casting with satin nickel-plated finish. Three exposed countersunk mounting screw holes. 70mm diameter, projects 87mm. Withstands 136kg downward pull.

B-2116 Similar to B-211, but with three concealed mounting screw holes. Locks to wall plate with three stainless steel setscrews for theft-resistant mounting.



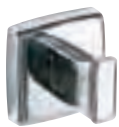
B-212
Surface-Mounted Clothes Hook and Bumper

Solid aluminium casting, matte finish. Rubber bumper protects wall or partition surfaces. 38mm wide, 51mm high; projects 95mm from wall.



B-233
Surface-Mounted Clothes Hook

3.2mm (11-gauge), type 304 stainless steel, satin finish. 32mm wide, 57mm high; projects 29mm from wall.



B-670
Surface-Mounted Utility Hook

Bright-polished stainless steel. For bath robe, shoe-shine cloth and sanitary towel disposal bag. Flange is 51 x 51mm. Hook 13mm wide, projects 51mm from wall.

B-6707 Similar to B-670, but with satin finish.



B-671
Surface-Mounted Single Robe Hook

Bright-polished stainless steel. Flange is 51 x 51mm. Projects 51mm from wall.

B-6717 Similar to B-671, but with satin finish.

B-7671 Similar to B-671. Projects 41mm from wall.

B-76717 Similar to B-7671, but with satin finish.



B-287
Surface-Mounted Folding Utility Shelf

Type 304 stainless steel, satin finish. Easily installed on toilet partition or wall. Pull-down shelf returns to upright position when not in use. Supports 45kg when correctly installed. 146mm wide, 368mm long.



B-544
Cubicle Collection
Toilet Brush Holder

Heavy-duty type 304 stainless steel, satin finish. Vandal-resistant wall-mounting bracket. Stainless steel handle with nylon brush head. Water reservoir included. Overall height 403mm; projects 103mm from wall. See page 22 for more information.



B-687
Surface-Mounted Door Bumper

Bright-polished stainless steel. Flange is 51 x 51mm. Black nylon post with black neoprene bumper. Projects 54mm from wall.



B-674
Surface-Mounted Towel Bar

Bright-polished stainless steel. Round 19mm diameter towel bar. Available in 457mm and 610mm lengths. Projects 83mm from wall.

B-6747 Similar to B-674, but with satin finish. 610mm length.



B-676
Surface-Mounted Towel Shelf with Towel Bar

Shelf 159mm wide, consists of four 8mm square tubes firmly mounted in support arms. 8mm square towel bar below shelf. 610mm length. Projects 216mm from wall.



B-683
Surface-Mounted Toiletry Shelf

Bright-polished stainless steel. 610mm length. Shelf 121mm wide, projects 146mm from wall. Edges are roll-formed for safety.



B-673
Surface-Mounted Towel Bar

Bright-polished stainless steel. 19mm square towel bar. Available in 457mm and 610mm lengths. Projects 83mm from wall.

B-6737 Similar to B-673, but with satin finish. 610mm length.



B-681
Surface-Mounted Soap Dish And Bar

Bright-polished stainless steel. Drawn, one-piece soap dish welded to support arm and flange. Two ridges to support bar of soap and two drain holes. 19mm square bar 216mm long. Unit 305mm wide, 51mm high; projects 86mm from wall.



B-4390
Recessed Heavy-Duty Soap Dish and Bar

Matte-finish stainless steel. Mounting clamp for stud walls.

B-4380 Similar to B-4390, but without bar.

	Unit	Wall Opening
Width	183	152
Height	127	102
Recess	67	102
Projection	37	N/A



B-680
Surface-Mounted Soap Dish

Bright-polished stainless steel. Drawn, one-piece soap dish welded to support arm and flange. Two ridges to support bar of soap and two drain holes. Unit 114mm wide, 51mm high; projects 86mm from wall.

B-6807 Similar to B-7680, but with satin finish.



B-6047
ClassicSeries
Surface-Mounted Extra-Heavy-Duty Shower Curtain Rod

Satin-finish stainless steel rod and flanges. 1.2mm (18-gauge), 32mm diameter rod. Flanges are 64mm square. Available in 914mm, 1219mm, 1524mm, 1829mm lengths.



B-6107
ClassicSeries
Surface-Mounted Heavy-Duty Shower Curtain Rod

Satin-finish stainless steel rod and flanges. 1.0mm (20-gauge), 25mm diameter rod. Flanges are 64mm square. Available in 914mm, 1219mm, 1524mm, 1829mm lengths.



B-207
ClassicSeries
Surface-Mounted Shower Curtain Rod with Concealed Mounting

Satin-finish stainless steel, 1.0mm (20-gauge), 25mm diameter rod. Flanges are 35mm diameter, chrome-plated plastic, bright-polished finish; mount on concealed wall brackets. Available in 914mm, 1219mm, 1524mm, 1829mm lengths.



204-2
Vinyl Shower Curtain

Opaque, matte white vinyl, 0.2mm thick, contains antibacterial and flame-retardant agents. Nickel-plated brass grommets along top. Bottom and sides are hemmed. Curtain 1067mm wide, 1829mm high. Requires 7 hooks, not included.

204-3 Similar to 204-2, but curtain is 1778mm wide, 1829mm high. Requires 12 hooks.

204-1 Shower Curtain Hook Type 304 stainless steel for use on 25mm and 32mm diameter shower curtain rods.



B-3541
Surface-Mounted Sanitary Disposal Bag Dispenser

Satin-finish stainless steel. Equipped with concealed locking device. Concealed wall plate 0.8mm (22-gauge) type 304 stainless steel. Holds one pack of 25 two-ply plastic bags.

Width	95
Height	105
Depth	25



B-270
ConturaSeries
Surface-Mounted Sanitary Towel Disposal

Satin-finish stainless steel. Cover is drawn, one-piece construction; secured to cabinet with full length stainless steel piano-hinge. 3.8L.

Width	191
Height	254
Depth	97



B-4354
ConturaSeries
Partition-Mounted Sanitary Towel Disposal

Satin-finish stainless steel. Mounts centred through toilet partitions. Self-closing doors pull down on both sides for access to disposal. Removable, leak-proof, 2.7L plastic bin.

	Unit	Partition Opening
Width	324	286
Height	279	241
Partition Thickness	13-32	N/A
Projection	38	N/A



B-4353
ConturaSeries
Recessed Sanitary Towel Disposal

Satin-finish stainless steel. Self-closing door pulls down for access to disposal. Furnished with removable, leak-proof, 4.5L plastic bin.

	Unit	Wall Opening
Width	324	286
Height	279	241
Depth	100	102
Projection	37	N/A



B-35303
TrimLineSeries
Recessed Sanitary Towel Disposal

Satin-finish stainless steel. Door has 90° return, conceals flange. Self-closing panel covers disposal opening. Removable, leak-proof, 4.5L plastic bin.

	Unit	Wall Opening
Width	330	292
Height	481	438
Recess	92	95
Projection	14	N/A



B-254
ClassicSeries
Surface-Mounted Sanitary Towel Disposal

Satin-finish stainless steel. Door has key lock. Self-closing panel covers disposal opening. Removable, leak-proof, 4.5L plastic bin.

Width	271
Height	384
Depth	103



B-353
ClassicSeries
Recessed Sanitary Towel Disposal

Satin-finish stainless steel. Seamless, bevelled flange. Door has key lock. Self-closing panel covers disposal opening. Removable, leak-proof, 4.5L plastic bin.

	Unit	Wall Opening
Width	324	279
Height	437	397
Recess	100	102
Projection	3	N/A



B-354
ClassicSeries
Partition-Mounted Sanitary Towel Disposal

Satin-finish stainless steel. Mounts centred through toilet partitions. Self-closing panels cover openings on both sides. Removable, leak-proof, 4.6L plastic bin.

	Unit	Partition Opening
Width	324	279
Height	437	394
Partition Thickness	13-32	N/A
Projection	71-90	N/A

Product Warranties

The following Bobrick products are warranted to be free from defects in workmanship and material under normal usage from the date of purchase for the periods set forth below. (Rust and discolouration to stainless steel parts resulting from exposure to harsh environmental and/or chemical conditions are not considered to be defects in workmanship or material and there is no express or implied warranty for such conditions. Refer to Bobrick Advisory Bulletin TB-21, Effective Ways to Clean Stainless Steel.)

Washroom Accessories/Soap Dispensers	Limited Warranty
ConturaSeries Washroom Accessories	3 years
Soap Dispensers B-306, B-4063, B-4112, B-822 Series	3 years

The following Bobrick mirrors are warranted against silver spoilage from the date of purchase for the periods set forth below:

Mirrors	Limited Warranty
B-290, B-2908, B-292 Series	15 years
B-165, B-1658, B-166 Series	15 years

The following Bobrick hand dryers are warranted to be free from defects in workmanship and material under normal usage from the date of purchase for the periods set forth below:

Hand Dryers	Limited Warranty
AirCraft Dryers B-700, B-750.	Motor brushes for 3 years; all other parts for 10 years.
Eclipse Dryers B-740, B-748	
TrimLineSeries Dryers B-7120, B-7128	
Elan B-715, B-715E	5 years
Compac B-710, B-710E	1 year

The following Koala Kare products are warranted to be free from defects in workmanship and material under normal usage, and a replacement policy against vandalism from the date of purchase for the periods set forth below:

Koala Kare Products	Limited Warranty
Baby Changing Stations KB100-ST-INB, KB101-INB, KB110-SSRE-INB, KB110-SSWM-INB, KB111-SSWM-INB, KB111-SSRE-INB KB200, KB200-INB	5 years
Child Protection Seat KB102-INB	5 years

Other Products

Bobrick washroom accessories not listed in this section are warranted to be free from defects in workmanship and material under normal usage service for one year from the date of purchase. (Rust and discolouration to stainless steel parts resulting from exposure to harsh environmental and/or chemical conditions are not considered to be defects in workmanship or material and there is no express or implied warranty provided for such condition. Refer to Bobrick Advisory Bulletin TB-21, Effective Ways to Clean Stainless Steel.)

Product Warranties

Limitations on Warranties

In all instances, the purchaser's exclusive remedy is for the repair or replacement, at Bobrick's option, of warranted defective products or parts. Bobrick will also bear the cost of the purchaser's return of defective products or parts to Bobrick. Bobrick's warranties set forth above do not cover damage resulting from vandalism. No other remedy (including, but not limited to, damages for field labour charges, lost profits, lost sales, injury to persons or property or any other incidental or consequential losses) is available.

Patents

Certain Bobrick products are protected in several countries throughout the world by one or more of the following Patent Numbers: **Australia:** 325470; **China:** ZL200930004164.1; **Europe:** 1114637-0001, 1114367-0002; **France:** 926706, 916396, 322840-45; **Germany:** M9303824.0, M9207892.3, M9207590.8, M9207589.4, M9203131.5, M9203130.7, M9106618.2; **Hong Kong:** 9700489.1, 9700488, 9700487.7, 9700486.5; **Italy:** 67001, 66879, 66877, 64502; 64352, 64351; **Mexico:** 6270; **Singapore:** DU2003/563, DU2003/562/I, DU2003/11/B, DU2003/10/F; **Spain:** 130441/0, 129187/4, 129186/6; **Switzerland:** 119685; **Taiwan:** D136662; **United Kingdom:** 2026406, 2026405, 2026390, 2022641, 2022640, 2003959, 2003958. Other patents pending.

Trademarks

1. Bobrick trademark is registered with the United States Patent and Trademark Office and as a trademark in several countries throughout the world.
2. Koala Kare trademark is registered with the United States Patent and Trademark Office and as a trademark in several countries throughout the world.
3. MICROBAN trademark is registered with the United States Patent and Trademark Office and as a trademark in numerous countries throughout the world.
4. Remaining Bobrick trademarks are registered with the United States and Canadian patent and trademark offices and in some other countries throughout the world.

Photo Licences:

Wynn Macau Resort photo used under the Creative Commons Attribution 3.0 Unported licence. Abu Dhabi International Airport photo courtesy of Nmnogueira at en.wikipedia; used under Creative Commons Attribution-Share Alike 2.5 Generic Licence. Hong Kong Convention and Exhibition Centre photo used under GNU Free Documentation Licence, Version 1.2. O2 World Berlin photo used under GNU Free Documentation Licence, Version 1.2.

Illustrations and descriptions herein are applicable to production as of the date of this catalogue. The manufacturer reserves the right to, and does from time to time, make changes and improvements in designs and dimensions. Catalogue No. IWAE11, 24M. Feb 2011. © 2011 Bobrick Washroom Equipment, Inc. Printed in USA.

Bobrick International

	☎	☎	✉	🌐
Global HQ	+1.818.764.1000	+1.818.503.9941	international@bobrick.com	www.bobrick.com
Australia	1800.353158	1800.221926	international@bobrick.com	www.bobrick.com.au
Germany	0800.79.00.456	0800.79.00.789	info@bobrick.de	www.bobrick.de
UK	+44 (0)20 8366 1771	+44 (0)20 8363 5794	uksales@bobrick.com	www.bobrick.co.uk

