

## TB-55 Locating Accessories Inside the Toilet Partition

### Partition-Mounted Accessories

- Accessories in a toilet partition should be positioned to be within easy reach from the toilet. All accessories should be accessible on a side wall or partition.
- Bobrick will provide cutouts for partition-mounted accessories in toilet compartment panels as follows
  - **Setup charge per order:** No setup charge for Bobrick or Gamco partition-mounted accessories; \$150.00 for competitors' partition mounted accessories.
  - **Cutout charge per unit:** \$25.00 for each Bobrick, Gamco or competitors' partition-mounted accessories.

Recommended placement of Bobrick partition-mounted accessories is shown on the reverse side of this sheet.

- Advise Customer Service at time of order to change standard accessory cutout position when:
  - Accessory position shown on reverse side of this sheet is not the desired location.
  - Standard Bobrick cutout position does not meet a local code.
  - Setup charge per order applies.
- In partitions designed to accommodate wheelchairs, accessories should be mounted so the operating features meet local or state building codes or federal law whichever apply. The Americans with Disabilities Act Accessibility Guidelines (ADAAG) and CABO/ANSI A117.1-1992 state for side reach the operating mechanism should be 38"-54" (965-1370mm) above the finish floor and for forward reach a maximum of 48" (1220mm) above the finish floor. Roll toilet tissue dispensers should be located no more than 36" (915mm) from the back wall (ADAAG); 7"-9" (178 - 229mm) in front of the water closet (CABO/ANSI A117.1-1992). The roll toilet tissue dispenser's horizontal centerline should be at least 19" (485mm) above the finish floor (ADAAG); 15"-48" (381-1220mm) above the finish floor (CABO/ANSI A117.1-1992).
- Bobrick recommends installing a B-687 bumper to prevent impact of an inswing door with partition-mounted accessories. The B-687 bumper has a cushioned tip that projects 2" (50mm) and a stainless steel base with satin finish to match Bobrick toilet compartment hardware. This bumper can also be used to protect finished walls from outswing doors on barrier-free corner or alcove compartments.

## TB-55 Locating Accessories Inside the Toilet Partition

### Suggested Position of Cutouts in Panel for Bobrick Partition Mounted Accessories

#### Designer's Notes:

1. Illustrations, dimensions and applications shown are advisory only; all installations must conform to local codes. *Advise customer service when different location is preferred.*

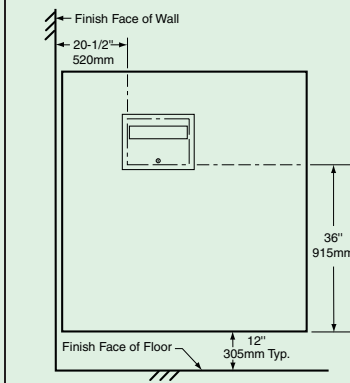
2. Dimensions shown to finished wall include a nominal 1/2" (13mm) wall gap.

3. This symbol identifies accessory layout that would accommodate the handicapped and permit the use of grab bars and permit the use of grab bars at approximately 33" (840mm) above the floor. Grab bars selected should be evaluated for placement of intermediate supports. Bobrick grab bars that can be used with these partition layouts: B-5837, B-58616, B-68137, B-6861, B-68616, and all straight grab bars 42" (610mm) or longer.

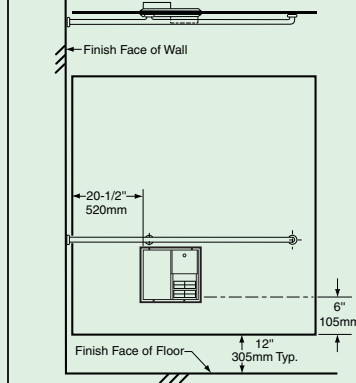
4. Units B-3471, and B-3571 have one side flush against partition to allow clearance for a grab bar across front of unit in one partition. Consult local codes for toilet partition clearance requirements.

Drawings are not to scale.

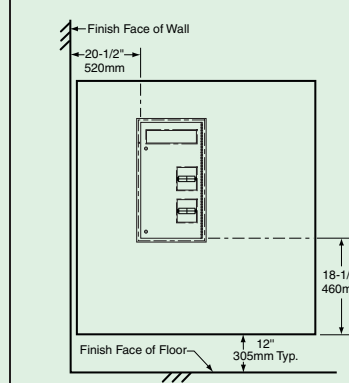
**Cutout for B-304**  
15-1/2" wide x 11" high 395 x 280mm  
1040504



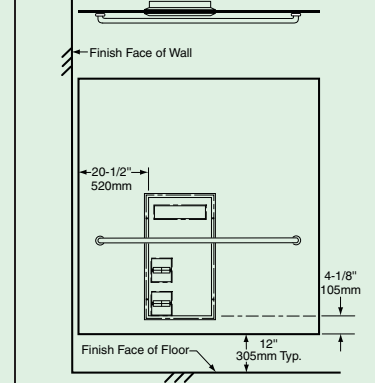
**Cutout for B-386**   
11-1/2" wide x 10-7/8" high 290 x 275mm  
1040502



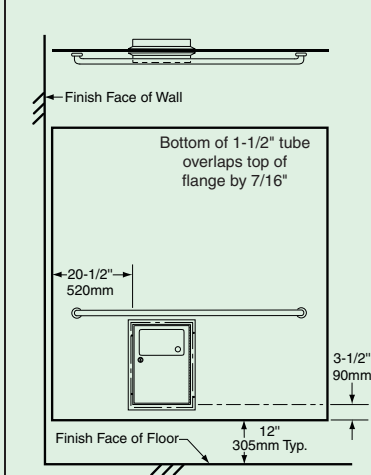
**Cutout for B-347, B-357**  
15-1/2" wide x 28-7/8" high 395 x 735mm  
1040505



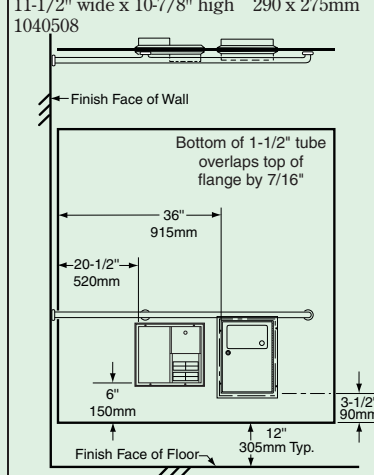
**Cutout for B-3471, B-3571**   
15-1/2" wide x 28-7/8" high 395 x 735mm  
1040509



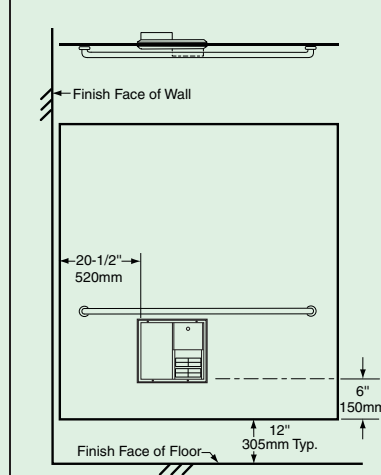
**Cutout for B-354**   
11" wide x 15-1/2" high 280 x 395mm  
1040506



**Cutout for B-354**   
11" wide x 15-1/2" high 280 x 395mm  
**B-386**  
11-1/2" wide x 10-7/8" high 290 x 275mm  
1040508



**Cutout for B-386**   
11-1/2" wide x 10-7/8" high 290 x 275mm  
1040507



**Cutout for B-4354**   
11" wide x 9-3/8" high 280 x 240mm  
1040577

