



Dryer Troubleshooting and Information Guide

Effective 10/09

www.bobrick.com

In the United States: BOBRICK WASHROOM EQUIPMENT, INC.

200 Commerce Drive, Clifton Park, NY 12065-1350, Telephone: (518) 877-7444, FAX: 518-877-5029
11611 Hart Street, North Hollywood, CA 91605-5882: (818) 982-9600, FAX: 818-503-1102
100 Bobrick Drive, Jackson, TN 38301-5635, Telephone: (731) 424-7000, FAX: 731-424-7800

In Canada: BOBRICK WASHROOM EQUIPMENT COMPANY.

45 Rolark Drive, Scarborough, Ontario M1R 3B1, Telephone: (416) 298-1611, FAX: 416-298-6351

International Sales: BOBRICK WASHROOM EQUIPMENT

11611 Hart Street, North Hollywood, CA 91605-5882, 818-764-1000, FAX: 818-503-9941.

Australia: 1800-353158, FAX: 1800-221926. **United Kingdom:** 208-366-1771, FAX: 208-363-5794.

Germany: 00800-33-66-99-99, FAX: 00800-22-33-44-44. **Email:** international@bobrick.com

Contents

Page

1. [Routine Maintenance Instructions](#) 3
2. [Dryer Service Information Guide](#) 4
3. [Sample Dryer Service Information Sheet](#) 5
4. [Date Code Information](#) 6

Links to model guides:

[AirCraft[®], AirGuard[™] & AirPro[™] Dryer](#)

[CompacDryer[™]](#)

[Cub[™] Dryer](#)

[Eclipse[®] Dryer](#)

[Elan[™] Dryer](#)

[TrimLine[™] ADA Dryer](#)

Routine Maintenance Instructions

All Bobrick Dryers require cleaning every 6 months to ensure that they function effectively. Please note that failing to clean the dryer may result in malfunction and can void the warranty.

WARNING:

TURN ELECTRICAL SUPPLY OFF BEFORE DOING ANY MAINTENANCE OR SERVICE TO DRYER.

CERTAIN INTERNAL PARTS ARE INTENTIONALLY NOT GROUNDED AND MAY PRESENT A RISK OF ELECTRIC SHOCK DURING SERVICING. SERVICE PERSONNEL - DO NOT CONTACT THE FOLLOWING PARTS WHILE THE APPLAINCE IS ENERGISED: - MOTOR LAMINATIONS.

DRYER MUST NOT BE OPERATED UNLESS COVER IS IN PLACE.

For your safety please note important signs prior to handling dryer:



Cleaning Instructions:

a) The Exterior of Cover

Should be cleaned with a damp cloth, **DO NOT** use aggressive cleaners or solvents as they may permanently damage the surface.

Bobrick dryers are drip proof (IP21 or better, see rating label). **DO NOT** spray with liquids to an extent that they could enter the unit.

b) The Interior

Having turned off all power to the dryer, remove the cover.

Using a small brush or vacuum, carefully clean out the build up of dust and lint.

Always check the length of the motor brushes. If less than 1/2" replace. Check that motor brushes are installed correctly and that brushes are worn evenly. Not required for B-705, B-710 or B-715 models.

Replace the cover.

Turn the power back on.

NOTE: If the dryer is installed in an area prone to dust and dirt these cleaning procedures should be carried out more frequently.

Dryer Service Information Guide

(For use by Customer Service or Factory Representatives)

- Please fill out the [Dryer Service Information Sheet](#) completely. If a section is not necessary/available insert N/A in the space.
- If the faulty dryer has been installed for 2 months or less, then **dryer will be replaced and faulty unit must be returned to the nearest Bobrick Customer Service Department.**
- **Dryer's must be cleaned and motor brushes must be checked** before going on with diagnosing the problem. Brush check not required for B-705, B-710, or B-715 models. Refer to routine maintenance instructions on page 3. If the dryer still does not function after cleaning, then continue filling out the Dryer Service Information Sheet.
- Malfunctioning/replaced parts must be returned to the Bobrick Customer Service Department or a charge will be made for replacement parts.



Dryer Service Information Sheet

Distributor/Rep/End-User Name: Bobrick's best

Address: 12345 Your Street, Suite 100

City: Toon Town State: Your State Zip code: 98765

Job Name: Fantasy Lane Job Location: My Town

Contact name: Jessica Rabbit Telephone: (111) 333-3333 Fax: (111) 333-4444

Email: jrabbit@bobricksbest.com Account #: 99999 Sales order #: 2468109

Invoice #: 357911 Invoice Date: 03/03

Dryer Model Information:

Automatic Dryer: TouchButton Dryer: (check one)

Hand Dryer: Hair Dryer: (check one)

Dryer model #/voltage: 700 115V

Quantity defective: 1 Quantity on job: 2 Date of installation: 06/03

Date code (as seen on bottom edge of cover on dryer UL label. For example: 04A): 03J

Dryer Information:

When did dryer problems first occur from date of installation? Upon 0-2 Installation Months 2+ Months Out of Warranty (circle one)

If dryer problem occurred within two months of installation, REPLACE dryer and return faulty dryer.

Does the dryer in any way function now? NO (Yes or No)

Has the dryer been cleaned in the past 6 months? NO (Yes or No) If No, send a cleaning sheet and await outcome.

Full description of fault: Unit would not start upon installation.

Reference to Diagnostic Sheets:

Problem and possible solution: Faulty controller.

Problem number(s) (as seen in left margin on diagnostic sheet): # 1 F

Repair kit/parts required (if dryer needs to be returned write RETURN): Return

Part number(s) for replacements: Complete Unit Replaced on SO #: _____

ANY DEFECTIVE PARTS MUST ACCOMPANY THIS COMPLETED SHEET TO BOBRICK'S SERVICE DEPARTMENT.

Information sheet completed by: Your Name Completion Date: 6/6/03

Branch/Rep Firm: _____
White Copy: To Repair>Returns Department at Appropriate Branch (attached to RGA)
Yellow Copy: To BLA Customer Service for Internal Routing
Pink Copy: To Customer Service Files at Appropriate Branch

Date Code Information

The date code on all Bobrick Dryers is found on the upper left corner of the rating label and on the serial number label.

The date code will contain two digits and one letter.

The digits designate the week and the letter designates the year.

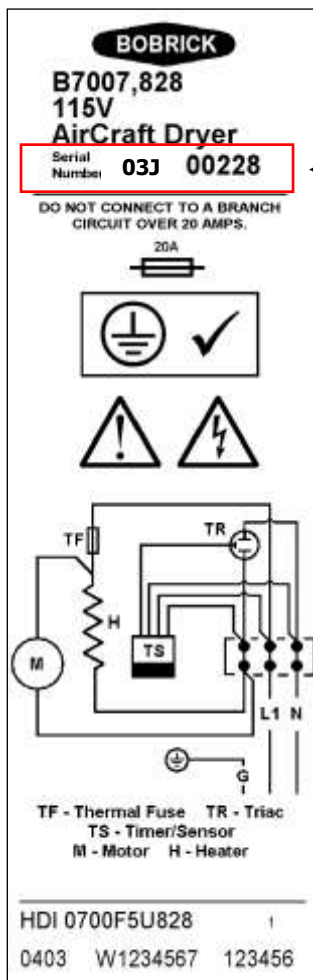
Example: 03J week three, year 2009.

All digits and letters are in ascending order.

Weeks are numbered from 1 to 52 for each year.



Rating Label



Serial Number Label

← Date code and serial number

- L = 2011
- K = 2010
- J = 2009
- H = 2008
- G = 2007
- F = 2006
- E = 2005
- D = 2004
- C = 2003
- B = 2002
- A = 2001
- Z = 2000
- Y = 1999
- X = 1998
- W = 1997
- V = 1996
- U = 1995
- T = 1994
- S = 1993
- R = 1992
- P = 1991
- N = 1990
- M = 1989



AirCraft[®], AirGuard[™] & AirPro[™] Dryer Guide

Effective 10/09

All Bobrick dryers require cleaning every 6 months to ensure that they function effectively. Please note that failing to clean the dryer may result in malfunction and can void the warranty.

(Refer to page 3 of the [Dryer Troubleshooting and Information Guide](#) for Routine Maintenance Instructions)

www.bobrick.com

In the United States: BOBRICK WASHROOM EQUIPMENT, INC.

200 Commerce Drive, Clifton Park, NY 12065-1350, Telephone: (518) 877-7444, FAX: 518-877-5029
11611 Hart Street, North Hollywood, CA 91605-5882: (818) 982-9600, FAX: 818-503-1102
100 Bobrick Drive, Jackson, TN 38301-5635, Telephone: (731) 424-7000, FAX: 731-424-7800

In Canada: BOBRICK WASHROOM EQUIPMENT COMPANY.

45 Rolark Drive, Scarborough, Ontario M1R 3B1, Telephone: (416) 298-1611, FAX: 416-298-6351

International Sales: BOBRICK WASHROOM EQUIPMENT

11611 Hart Street, North Hollywood, CA 91605-5882, 818-764-1000, FAX: 818-503-9941.

Australia: 1800-353158, FAX: 1800-221926. **United Kingdom:** 208-366-1771, FAX: 208-363-5794.

Germany: 00800-33-66-99-99, FAX: 00800-22-33-44-44. **Email:** international@bobrick.com

AirCraft[®], AirGuard[™] & AirPro[™] Dryers

Contents	Page
1. Product Identification	3
2. Cover removal	5
3. Diagnostic Sheet	6
4. Screwdriver Test	7
5. Field Replacement Parts	9
6. Installation Instructions	11
7. Schematic Diagrams	19
8. Warranty	18

Product Identification

AirCraft[®] Dryers

For complete set of Installation Instructions refer to form No. 700-69

http://www.bobrick.com/Bobrick/Install_Instructions.aspx

Surface-Mounted Dryers:

B-700 Automatic Hand & Face (pictured)

B-701 Touch Button Hand & Face (obsolete)

B-731 Touch Button Hair



For complete set of Installation Instructions refer to form No. 750-69

http://www.bobrick.com/Bobrick/Install_Instructions.aspx

Recessed Dryers:

B-750 Automatic Hand & Face (pictured)

B-751 Touch Button Hand & Face (obsolete)

B-781 Touch Button Hair (obsolete)



Product Identification

AirGuard™ Dryer

For complete set of Installation Instructions refer to form No. 708-69

http://www.bobrick.com/Bobrick/Install_Instructions.aspx

B-708 Automatic

Series Variations:

Series G lower profile cover, no nameplate or printing. (pictured)

Not all replacement parts are interchangeable, see [parts list](#).



Product Identification

AirPro™ Dryer

For complete set of Installation Instructions refer to form No. 709-69

http://www.bobrick.com/Bobrick/Install_Instructions.aspx

B-709 Touch Button (obsolete)

B-709 Automatic

Series Variations:

Series A touch button model, metal nameplate. (obsolete)

Series B automatic model, metal nameplate. (obsolete)

Series C automatic model, lower profile cover, no nameplate. (obsolete)

Series D automatic model, lower profile cover, no nameplate, no graphics.

Not all replacement parts are interchangeable, see [parts list](#).



Instructions for Removal of Dryer Cover



Warning
Risk of electric
shock



Disconnect power
supply before
removing cover

To Remove Cover

Locate the two tamper resistant screws at the bottom of the dryer cover.

Using the Allen-wrench (4 or 5mm), turn the screws **clockwise** to loosen the cover. Do not take the screws out, the screws have to be moved / rotated up to loosen the cover.

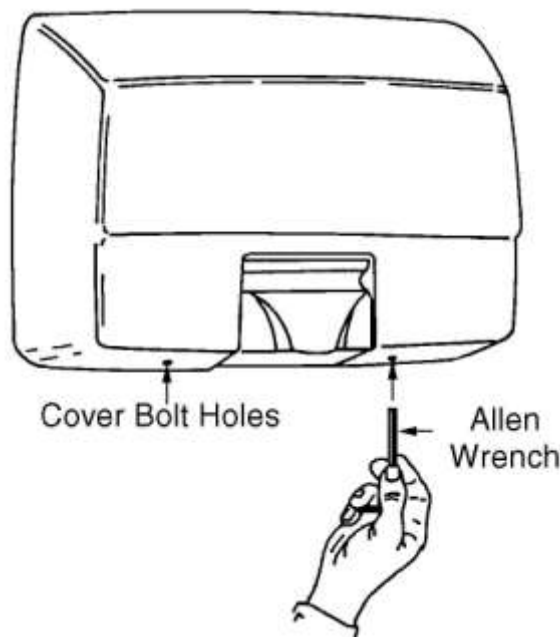
Lifting the cover over the two latches at the top of the chassis, remove the cover.

To Replace Cover

Place the cover over the two latches located at the top of the chassis. Make sure that the cover has a good fit.

Using the Allen-wrench, turn the screws **counter clockwise** moved/ rotated down which will tighten the cover onto the chassis. **Do not** over tighten screws.

Check to make sure the cover has a good fit. Turn power back on to the dryer unit.



Diagnostic Sheet for AirCraft[®], AirGuard[™] & AirPro[™] Dryers.

Problem	Possible Cause	Possible Solution
AUTOMATIC		
1. Dryer does not run	a) No electricity supply b) Dirty control lens c) Installation fault d) Worn motor brushes e) Element open circuit f) Control nonstart g) Triac open circuit	Check main supply / wiring Clean control lens Check circuit diagram label for possible wiring mistakes Check length of brushes; replace if less than ½" Return dryer to Bobrick for repair Replace control Replace triac
2. Sparks from dryer	Worn motor brushes	Replace motor brushes
3. Dryer runs at low speed	a) Worn motor brushes b) Triac halfwave c) Control halfwave	Replace motor brushes Remove white wire from triac; no difference, replace triac Remove white wire from triac; dryer stops, replace control
4. Dryer runs continuously	a) Triac short circuit b) Control faulty	Remove white wire from triac; no difference, replace triac Remove white wire from triac; dryer stops, replace control
5. Dryer cycles on and off	Control	Replace control
6. Dryer sometimes runs	Dirty control lens Control	Clean control lens Replace control
7. Dryer is oversensitive	Control	Replace control
8. Dryer blows cold air or motor runs fast	Heating element	Return dryer to Bobrick for repairs
9. Grinding noise from dryer	a) Worn motor brushes b) Fan cage is bent or damaged	Replace motor brushes Return dryer to Bobrick for repairs
10. Dryer does not run and heating element glows	Worn motor brushes	Replace motor brushes; if still not functioning after replacing the motor brushes, return dryer to Bobrick for repairs.
TOUCHBUTTON		
1. Dryer does not run	a) No electricity supply b) Installation fault c) Tabs are not connecting d) Worn motor brushes e) Element open circuit f) Timer assembly nonstart	Check main supply / wiring Check service manual for possible wiring mistakes Turn off power, remove cover and bend tabs closer to sensor board Check length of brushes; replace if less than ½" Return dryer to Bobrick for repair Perform Screwdriver Test (see test instructions)
2. Sparks from dryer	Worn motor brushes	Replace motor brushes
3. Dryer does not run and heating element glows	Worn motor brushes	Replace motor brushes; if still not functioning after replacing the motor brushes, return dryer to Bobrick for repairs.
4. Dryer runs at low speed	a) Worn motor brushes b) Timer assembly	Replace motor brushes Replace timer assembly
5. Dryer runs continuously	b) Timer assembly	Replace timer assembly
6. Dryer blows cold air	Heating element	Return dryer to Bobrick for repair
7. Grinding noise from dryer	a) Worn motor brushes b) Fan cage is bent or damaged	Replace motor brushes Return dryer to Bobrick for repair
8. Dryer is oversensitive and switches on or off randomly	a) Button loose b) Timer assembly or crystal board	Pack button O ring with tape Perform Screwdriver Test (see test instructions)
9. Dryer cycles on and off	Timer assembly or crystal board	Perform Screwdriver Test (see test instructions)

Screwdriver Test for Touch Button Dryers



Warning
Risk of electric
shock

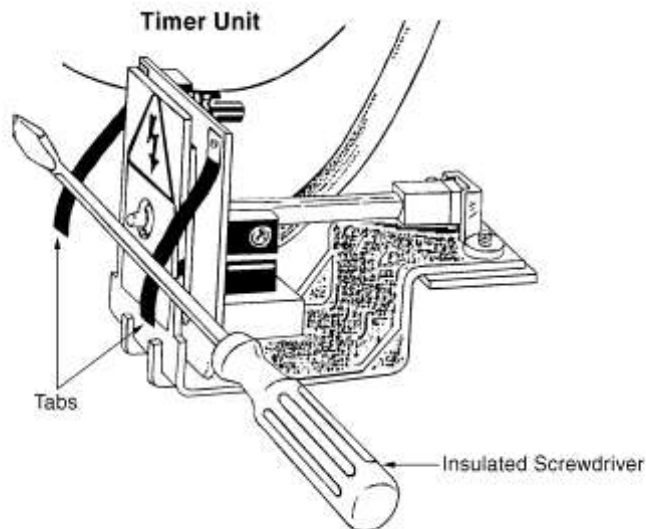


Disconnect power
supply before
removing cover

NOTE: This test instruction sheet is not for dissemination to, and should not be disseminated to, the public including end users.
This test is designed to test the **Touch Timer Assembly** and the **Sensor Board**.

Instructions For Test:

1. Turn off the power to dryer.
2. Remove dryer cover.
3. Turn on the power. **Do not** touch any part of the dryer.
4. Using an insulated screwdriver, short across the two tabs (see below).
 - a) If dryer runssensor board may be faulty replace sensor board.
 - b) If dryer does not runtimer may be faulty replace touch controller.
5. Turn off power to dryer.
6. Put dryer cover back on and turn power on.



Field Replacement Parts

- Replacement parts are intended to be issued by Bobrick after completion of diagnostic sheets and a problem is identified that involves replacement of parts.
- Replacement parts will then be sold to the customer/rep with credit issued upon the return of identifiable malfunctioning and/or unused parts.
- A copy of the Dryer Service Information Sheet must be completed by the rep and sent to Bobrick prior to return of parts.
- Dryer voltage must be identified in order to replace parts. Replacement parts have options for both the 115V and 208–240V dryers. Check voltage and then designate correct part(s).

[AirCraft[®] Dryer Replacement Parts](#)

[AirGuard[™] & AirPro[™] Dryer Replacement Parts](#)

AirGuard™ & AirPro™ Dryer Replacement Parts

	115V	208-240V
Touch controller	701-360	701-361
Sensor Board	701-138	701-138
Automatic controller	700-360	700-361
Air Outlet Grille & Seal	701-120	701-120
B-708 Series A – F cover	708-150 115V	708-150 240V
B-708 Series G cover (obsolete)	708G-150 115V	708G-150 240V
B-709 Series A cover	709-150 115V	709-150 240V
B-709 Series B cover (obsolete)	709B-150 115V	709B-150 240V
B-709 Series C cover (obsolete)	709C-150 115V	709C-150 240V

Product Identification

Common Parts

Triac	700-325
Motor Brushes EMD (Red Retainer)	700-101
Motor Brushes Sintech (Brass Retainer)	700-111
Motor Brushes Ametek & Winston	700-121
Cover Mounting Screws	700-156
Allen Wrench	700-55

Brush identification

The following items are not to be field replaced:

Motor/fan units.

Heating elements.

Installation Instructions

Installation Instructions	Page
<u>Cover Replacement</u>	12
<u>Installation of Touch Controller</u>	13
<u>Installation of Base Plate Mounted Triac</u>	14
<u>Installation of Automatic Controller</u>	15
<u>Instructions for Installation of Sensor Board</u>	16
<u>Instructions for the Replacement of Motor Brushes</u>	17
<u>Warranty</u>	18

Cover Replacement



Warning
Risk of electric
shock



Disconnect power
supply before
removing cover

The dryer covers for different models are NOT interchangeable.

Fig 1

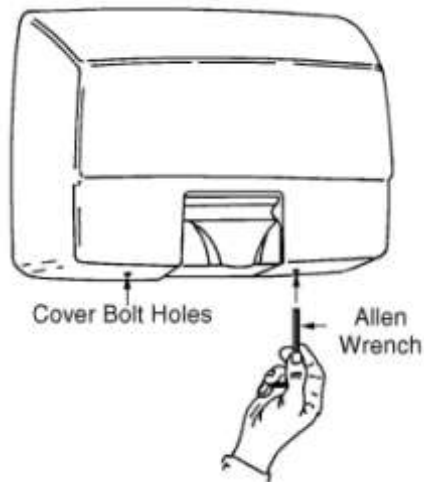


Fig 2

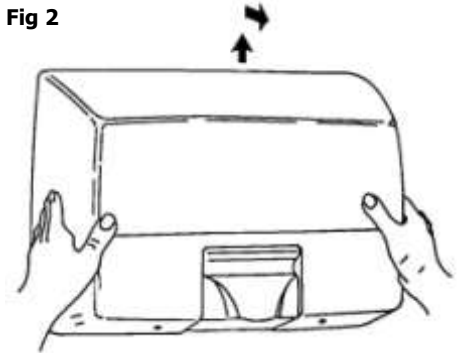


Fig 1A

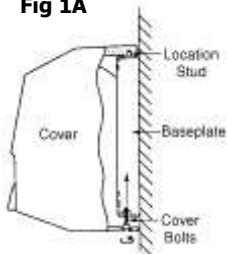


Fig 1B

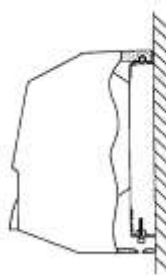
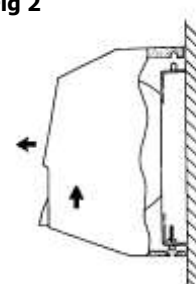


Fig 2



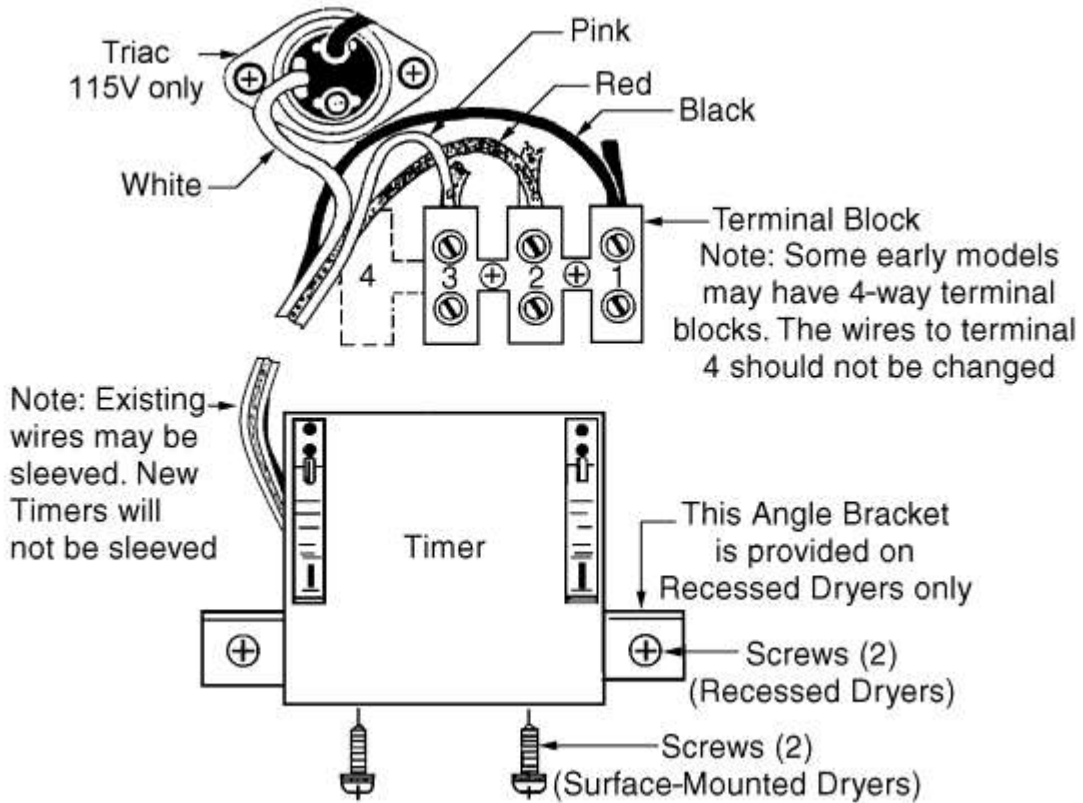
To Remove Cover

1. Disconnect the power supply.
2. Locate the two tamper resistant screws at the bottom of the dryer cover.
3. Using the Allen-wrench (4 or 5mm), turn the screws **clockwise** to loosen the cover.
4. Lifting the cover over the two latches at the top of the chassis, remove the cover.

To Replace Cover

1. Place the cover over the two latches located at the top of the chassis. Make sure that the cover has a good fit.
2. Using the Allen-wrench, turn the screws counter clockwise loosening the screws; this will tighten the cover onto the chassis. Do not over tighten the screws.
3. Check to make sure the cover has a good fit. Turn the power supply back on.
4. Allow 10 seconds for the controller to stabilize and check operation of the dryer. On Automatic Dryers if the operation is intermittent check that the controller has a clear view out of the cover aperture, use the spacers provided to raise the controller if required.

Installation of Touch Controller



To Remove Existing Timer

1. Disconnect the power supply and remove the cover.
2. Remove the timer from the base plate by unscrewing the two screws securing the timer bracket to the base. On recessed dryers the timer bracket is secured to a metal angle bracket, this bracket with its screws must be removed and retained for use on the replacement timer.
3. Disconnect the pink or yellow, red, and black timer wires from the terminal block and the white wire push on connector from the triac (115V only). Place the timer aside for return to the Service Department.

To Install New Timer

1. Mount the timer assembly to the base plate . In the case of recessed dryers, it is first necessary to attach the metal angle bracket removed from the faulty timer to the new timer.
2. Route the timer wiring under the element tube and attach the white wire push on connector to the small spade terminal on the triac (115V only), older 208 – 240V units may have a base plate mounted triac, this is no longer required and can be removed.
3. Connect the remaining three timer wires to the terminal block, black wire to terminal 1, red wire to terminal 2, pink wire to terminal 3.
4. Secure wiring with cable ties provided.
5. Replace dryer cover. Switch on electrical supply and test operation.



Warning
Risk of electric
shock



Disconnect power
supply before
removing cover

Installation of Base Plate Mounted Triac



Warning
Risk of electric
shock



Disconnect power
supply before
removing cover

Note: This procedure applies only to surface-mounted or recessed dryers with triac mounted on the base plate. For touch button models with triac mounted on the timer bracket, the complete timer assembly must be replaced.

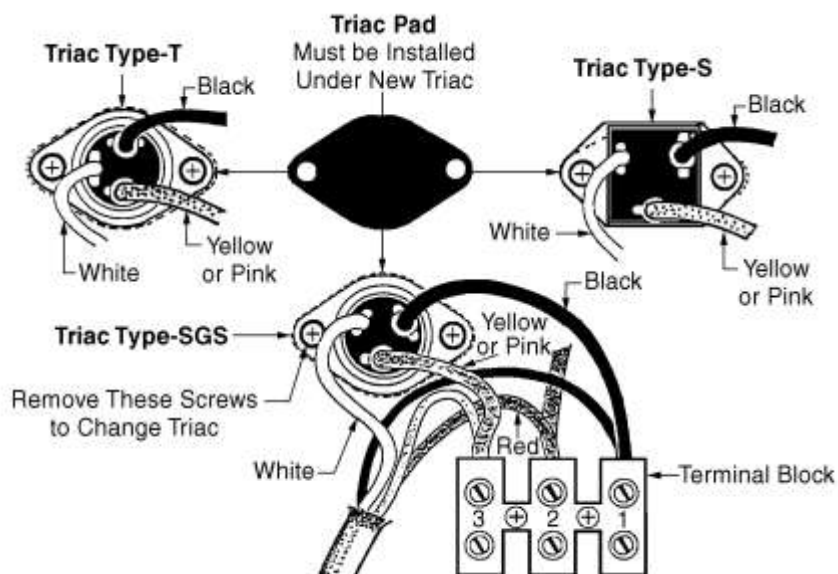
To Remove Existing Triac

1. Disconnect power supply and remove cover.
2. Remove white, yellow or pink, and black *Push On* connectors from triac.
3. Remove the two screws securing the triac to the base plate.
4. Remove the triac and place to one side for return to Service Department.

To Install New Triac

Note: On factory-installed triac, a white *Heat sink Compound* is interposed between the triac flange and the dryer base plate to ensure rapid conductivity of heat away from the triac. For service purposes this compound is replaced by a thin plastic gasket of heat conducting material, this must be sandwiched between the flange and the base plate during assembly.

1. Position new triac and pad on base plate with the Terminals positioned as shown in illustration below. Insert and tighten the two self-threading screws and shake proof washers provided.
2. Attach the white wire *Push On* connector to the small spade Terminal on the triac. The black wire from the Terminal Block should then be attached to the next Terminal round in a clockwise direction and the yellow or pink wire to the remaining Terminal.
3. Replace dryer cover. Switch on electrical supply and test operation, allow 10 seconds for the controller to stabilize before placing hands in front of lens (automatic units).



Installation of Automatic Controller



Warning
Risk of electric
shock

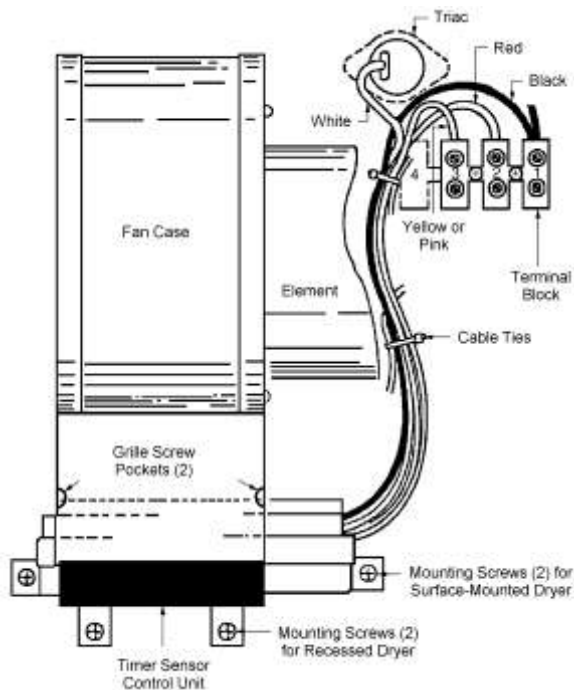


Disconnect power
supply before
removing cover

Older units have an intermediate plug and socket in the wiring, this has now been discontinued and can be removed with the faulty controller. The wiring on older units may be sleeved, this was later replaced by plastic cable ties. Some early 115 volt dryers had 4 way terminal blocks instead of the current 3 way blocks, in these dryers the wires to the 4th terminal should not be disturbed.

To Remove Control Unit

1. Remove outlet grille from front of fan case by unscrewing the securing screws.
2. Remove the screws securing the control unit to the base plate. (Note the different position of recessed and surface-mounted screws).
3. If the control unit wiring is secured by cable ties, carefully cut these to free the 4 wires from other wiring.
4. Remove the *Push On Terminal* securing the white wire to the triac.
5. Disconnect the controller wires from terminals 1, 2, and 3 on the terminal block. Leave all other wires in position.
6. Carefully lift control out of base plate. Avoid disturbing other wiring. (Note: On recessed dryers it will be necessary to slide the control to the right to clear the fan case).



To Install New Control Unit

1. Position the new control unit on the base plate to line up with the screw holes and secure with the screws and washers previously removed.
2. Route wiring under element tube and connect wiring as follows: white wire with *Push On Terminal* to triac. Black wire to Terminal 1 (with existing black wire). Red wire to Terminal 2 (with existing red wire). Pink wire to Terminal 3 (with existing wiring).
3. Secure all wires to existing wires with a minimum of 2 cable ties.
4. Replace grille and sealing gasket and secure with screws previously removed.
5. Check all wires for security and all screws for tightness.
6. Replace cover. Switch on electric supply.
7. Allow 10 seconds for the controller to stabilize and check operation of the dryer. If the operation is intermittent check that the controller has a clear view out of the cover aperture, use the spacers provided to raise the controller if required.

Instructions for Installation of Sensor Board



Warning
Risk of electric
shock



Disconnect power
supply before
removing cover

There are two methods fixing sensor boards.

1. Fixed with five screws, Fig 1.
2. Fixed with three screws, Fig 2.

In both cases the orientation of the board is critical.

Fig 1

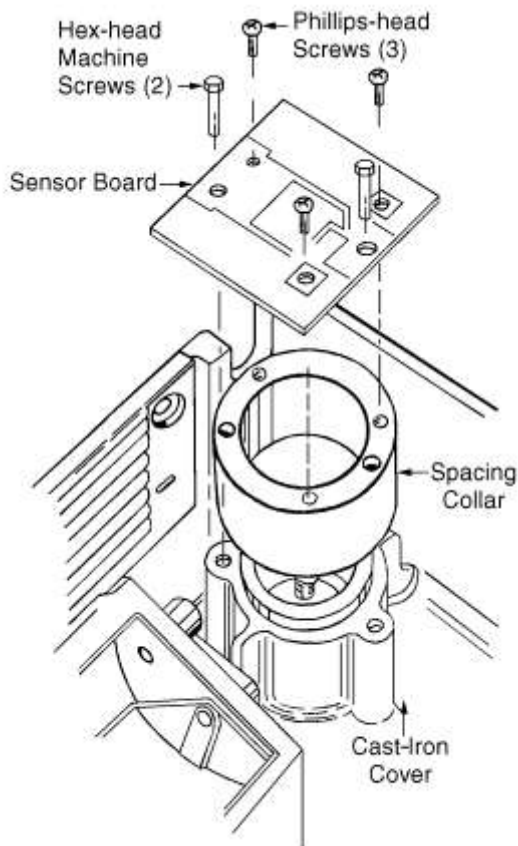
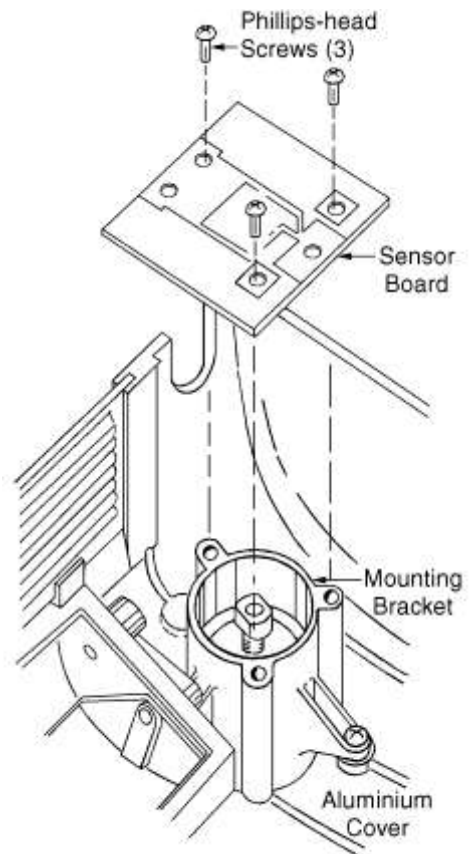


Fig 2



1. Switch off mains supply and remove cover. Place cover face downward on a bench using a cloth to protect the finish.
2. Remove the screws securing the board to the collar or bracket.
3. Mount the new board.
4. Replace cover. Switch on electrical supply and carry out normal hand drying procedure to test operation.

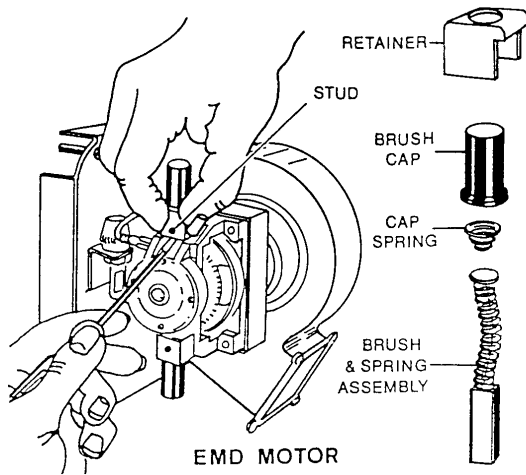
Instructions for the Replacement of Motor Brushes



Warning
Risk of electric shock



Disconnect power supply before removing cover



The brush spares kit contains two brushes. Always replace BOTH brushes.

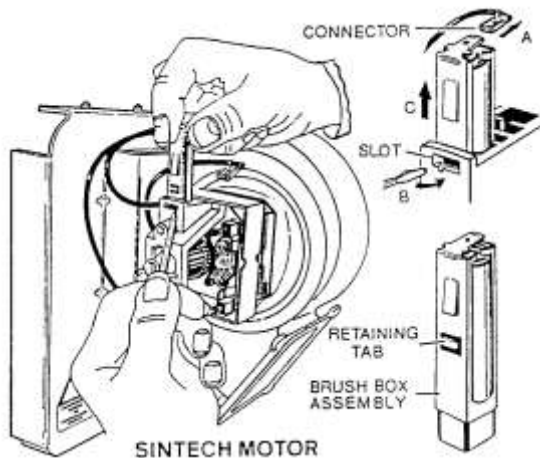
EMD MOTOR

To remove the brush:

1. Squeeze the sides of the retainer and ease it over the stud with a small screwdriver.
2. Remove the retainer, cap and brush. Do not mislay the small cap spring.

To replace the brush:

1. Insert the new brush into the holder.
2. Place the cap, with the cap spring inside it, over the brush spring and press it over the holder.
3. Slide the retainer down the cap and snap it into position over the stud.



SINTECH MOTOR

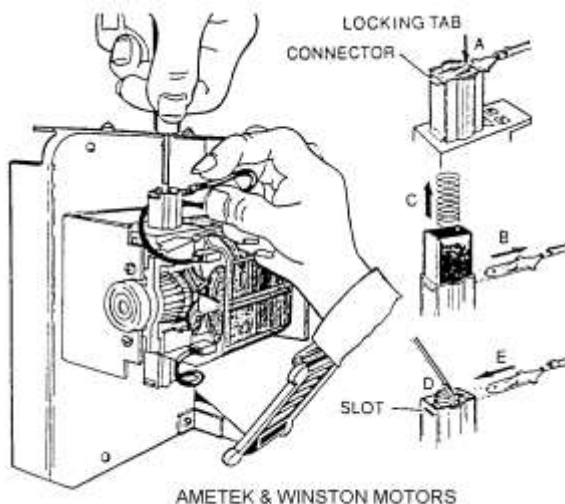
On this motor the brush is replaced by changing the complete brush box assembly.

To remove the brush box assembly:

1. Pull the connector off the terminal tab, (A).
2. Depress the retaining tab with a small screwdriver and pull out the brush box, (B) and (C).

To replace the brush box assembly:

1. Insert the new brush box and push it down until the retaining tab is level with the slot in the motor end frame.
2. Bend out the retaining tab.
3. Replace the connector on the terminal tab.



AMETEK & WINSTON MOTORS

On this motor the brush is replaced without disturbing the brush box.

To remove the brush:

1. Depress the locking tab in the connector with a small screwdriver, (A).
2. Slide out the connector and remove the brush, (B) and (C).

To replace the brush:

1. Insert the new brush into the holder.
2. Press the spring down with a screwdriver until it is below the connector slot, (D).
3. Push the connector into the slot until it locks into position, (E). Make sure that all of the top coil is under the connector.

Limited Warranty

The Bobrick Dryer and all parts (except motor brushes) are warranted to the original owner of the installed unit for ten years from date of original installation for AirCraft® and AirGuard™ Automatic and Touch Button hand and hair dryers and five years for AirPro™ hand dryers, against defects in factory workmanship or material under normal use and service. *

Motor brushes shall be warranted for three years from date of installation. This warranty is limited to repair or exchange of defective parts at the option of Bobrick Washroom Equipment, Inc.

THIS WARRANTY DOES NOT COVER ACCIDENTAL DAMAGE, IMPROPER HANDLING OR INSTALLATION, OR REPAIRS MADE BY UNAUTHORIZED PERSONS, AND SPECIFICALLY EXCLUDES CLAIMS FOR INDIRECT, ACCIDENTAL OR CONSEQUENTIAL DAMAGES TO PROPERTY. THE IMPLIED WARRANTIES OF MERCHANTABILITY AND FITNESS FOR A PARTICULAR PURPOSE ARE LIMITED TO THE SAME DURATION OF THE ABOVE WARRANTY.

Some states do not allow the exclusion of incidental or consequential damages, so the above limitation or exclusion may not apply to you. Some states do not allow limitations on how long an implied warranty lasts, so the above limitation may not apply to you. This warranty gives you specific legal rights, and you may also have other rights which vary from state to state.

- * **Normal service constitutes performing the following preventive maintenance procedures at six-month intervals:**

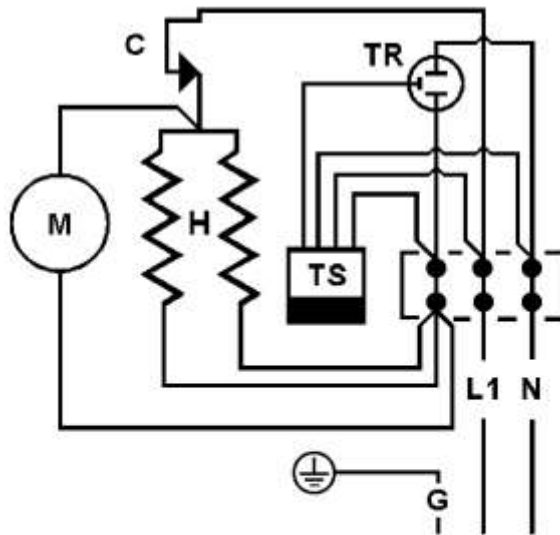
Remove cover and clean any lint, dust or grease from air inlet/outlet grille and baffle from behind air-outlet nozzle.

Visually inspect motor brushes to insure remaining brush length is a minimum of 1/2 inch (12.7mm).

Labor costs for preventive maintenance shall be at owner's expense.

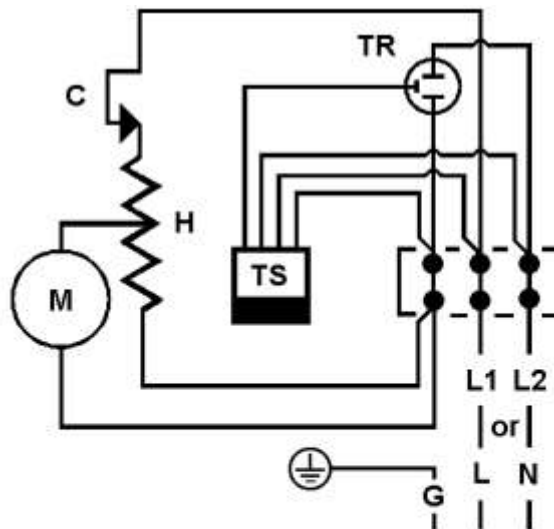
For repair or exchange of defective part, send the part together with installation date and serial number to Bobrick.

Schematic Diagram 115V Dryer



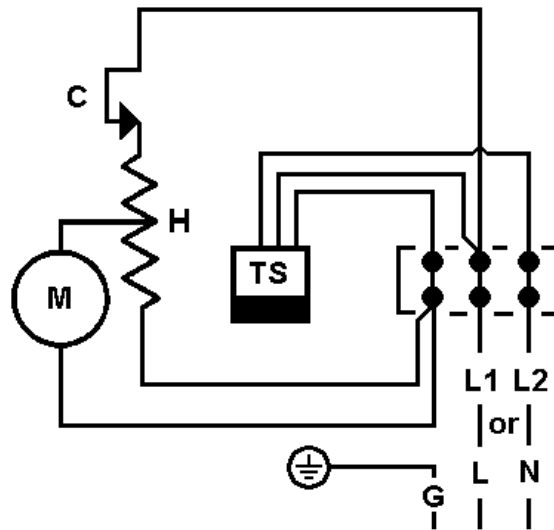
C - Cutout H - Heater
M - Motor
TR - Triac
TS - Timer/Sensor

Schematic Diagram 208-240V Automatic Dryer



C - Cutout H - Heater
M - Motor
TR - Triac
TS - Timer/Sensor

Schematic Diagram 208-240V Touch Dryer



C - Cutout
TS - Timer/Sensor
M - Motor H - Heater



CompacDryer™ Guide

Effective 10/09

All Bobrick dryers require cleaning every 6 months to ensure that they function effectively. Please note that failing to clean the dryer may result in malfunction and can void the warranty.

(Refer to page 3 of the [Dryer Troubleshooting and Information Guide](#) for Routine Maintenance Instructions)

www.bobrick.com

In the United States: BOBRICK WASHROOM EQUIPMENT, INC.

200 Commerce Drive, Clifton Park, NY 12065-1350, Telephone: (518) 877-7444, FAX: 518-877-5029
11611 Hart Street, North Hollywood, CA 91605-5882: (818) 982-9600, FAX: 818-503-1102
100 Bobrick Drive, Jackson, TN 38301-5635, Telephone: (731) 424-7000, FAX: 731-424-7800

In Canada: BOBRICK WASHROOM EQUIPMENT COMPANY.

45 Rolark Drive, Scarborough, Ontario M1R 3B1, Telephone: (416) 298-1611, FAX: 416-298-6351

International Sales: BOBRICK WASHROOM EQUIPMENT

11611 Hart Street, North Hollywood, CA 91605-5882, 818-764-1000, FAX: 818-503-9941.

Australia: 1800-353158, FAX: 1800-221926. **United Kingdom:** 208-366-1771, FAX: 208-363-5794.

Germany: 00800-33-66-99-99, FAX: 00800-22-33-44-44. **Email:** international@bobrick.com

CompacDryer™

Contents

Page

1. [Information and Troubleshooting](#) 3
2. [Limited Warranty](#) 4
3. [Series A Cover Installation Instructions](#) 5
4. [Schematic Diagrams](#) 6

Information and Troubleshooting for the B-710 CompacDryer™

For complete set of Installation Instructions refer to form No. 710-69

http://www.bobrick.com/Bobrick/Install_Instructions.aspx

Information about the Dryer:

- Model B-710 CompacDryer™ is not designed for vandal-prone installations. For vandal-prone installations use Bobrick AirCraft® dryers with cast-iron, vitreous enamel finished covers.
- Only the cover and the electronic controller are available for replacement.

Product Types:



B-710 Series A



B-710 Series B

Electrical Characteristics.

115V , 15A, 1725W , 60 HZ, cULus listed.

220-240V, 7A, 1500-1700W, 50/60Hz, VDE approved, CE marked.

Removal of Cover.

Remove three screws, one from each side and one from the bottom of the dryer. Pull bottom of the cover away from the mounting base.

If a fault occurs with the dryer:

1. Check that the electrical supply is OK.
2. Check that the circuit breaker is switched on.
3. Check that sensor is clean and not obstructed.

Replacement Parts

710-250	Series B cover 115V
710E-150	Series A cover 220-240V
710-360	Controller 115V
710-361	Controller 220-240V



Warning
Risk of electric
shock



Disconnect power
supply before
removing cover

Limited Warranty

The Bobrick B-710 CompacDryer™ are warranted to the original owner of the installed unit for one year from date of original installation against defects in factory workmanship or material under normal use and service*.

This warranty is limited to repair or exchange of defective parts at the option of Bobrick.

This warranty does not cover accidental damage, improper handling or installation, or repairs made by unauthorized persons, and specifically excludes claims for indirect, accidental or consequential damages to property. The implied warranties of merchantability and fitness for a particular purpose are limited to the same duration of the above warranty.

Some states do not allow the exclusion of incidental or consequential damages, so the above limitation or exclusion may not apply to you. Some states do not allow limitations on how long an implied warranty lasts, so the above limitation may not apply to you. This warranty gives you specific legal rights, and you may also have other rights which vary from state to state.

- * **Normal service constitutes performing the following preventive maintenance procedures at six-month intervals:**

Clean any lint, dust or grease from air-intake grille and air-outlet grille.

Labor costs for preventive maintenance shall be at owner's expense.

For repair or exchange of defective part, send the part together with installation date and serial number to Bobrick.

Replacement Instructions for B-710 CompacDryer™ Cover

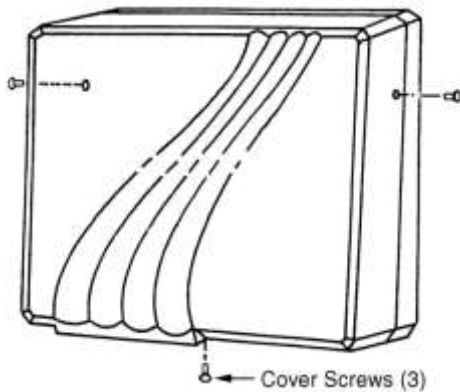


Warning
Risk of electric
shock



Disconnect power
supply before
removing cover

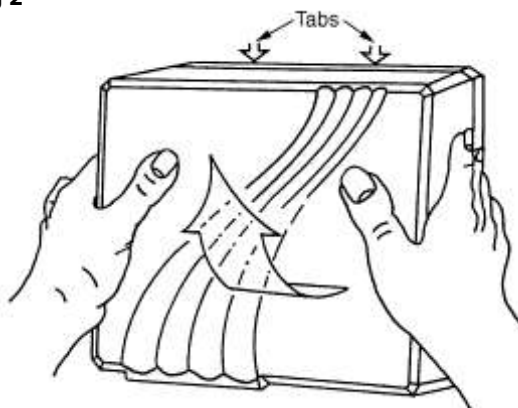
Fig 1



To Remove Existing Cover

1. Remove the (3) Phillips-head screws from the cover, (1) from each side and (1) from the bottom face of the dryer. See Fig. 1.
2. Pull the bottom of the cover outward and slightly downward, then rotate upward to disengage the (2) tabs from the slots at the base. See Fig. 2.

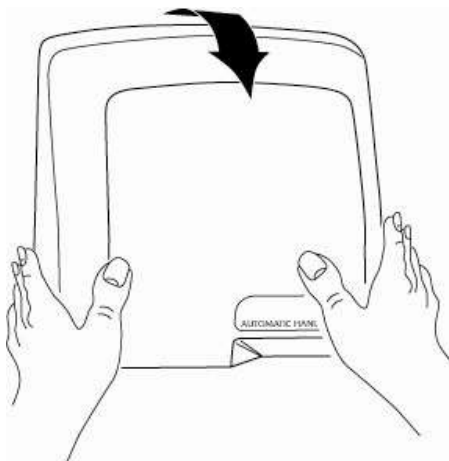
Fig 2



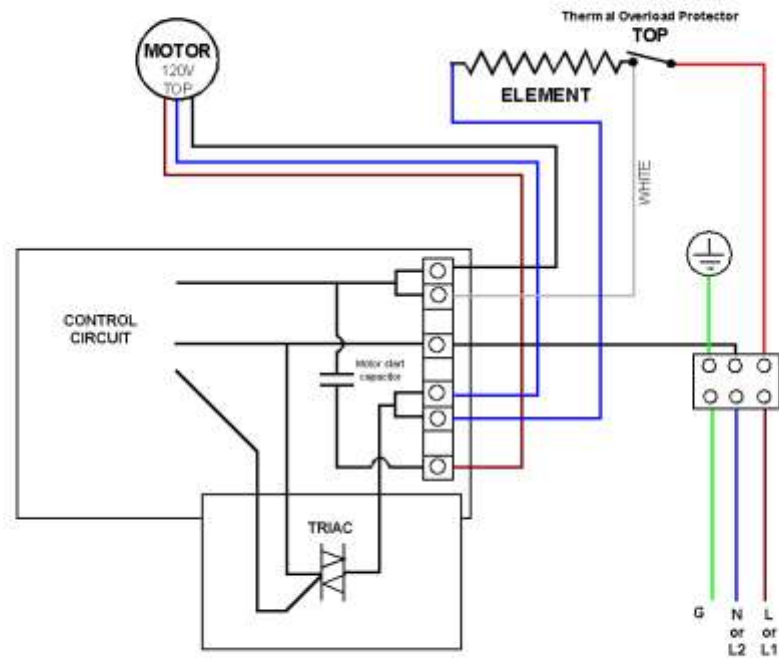
To Install New Cover

1. Slide cover onto base plate making sure that the bottom outlet aperture engages in the sides of the outlet grille.
2. Push the top of the cover forward until the (2) tabs snap into the slots in the base. See Fig. 3.
3. Check that the cover is a close fit to the base, then replace the (3) screws.
4. Reconnect electrical supply and test with normal hand drying procedure, allowing 10 seconds for the sensor to stabilize.

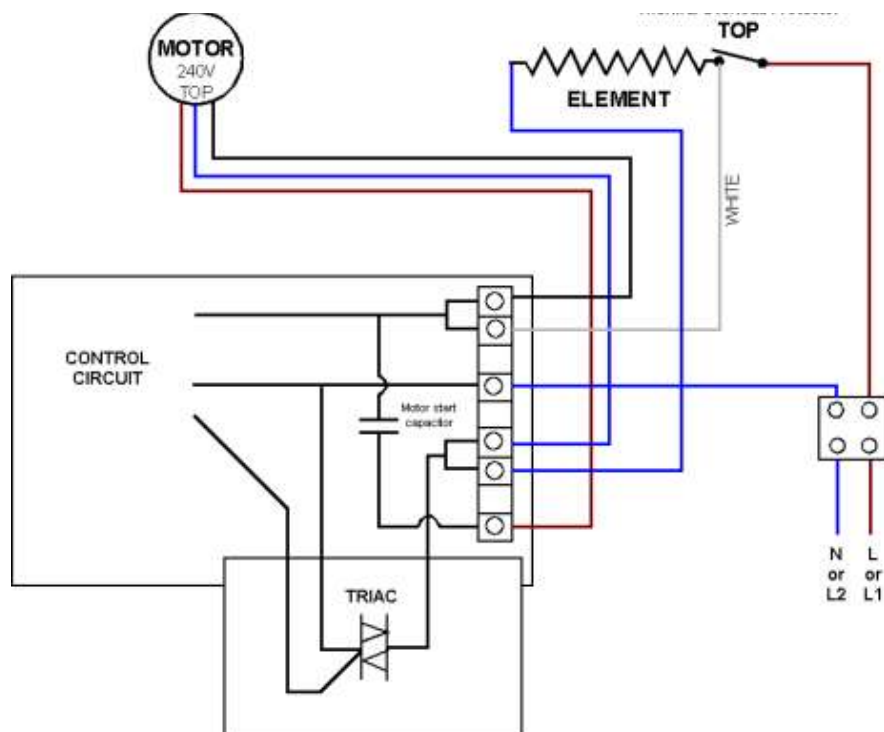
Fig 3



Schematic Diagram 115V Dryer



Schematic Diagram 220-240V Dryer





Cub™ Dryer Guide

Effective 10/09

All Bobrick dryers require cleaning every 6 months to ensure that they function effectively. Please note that failing to clean the dryer may result in malfunction and can void the warranty.

(Refer to page 3 of the [Dryer Troubleshooting and Information Guide](#) for Routine Maintenance Instructions)

www.bobrick.com

In the United States: BOBRICK WASHROOM EQUIPMENT, INC.

200 Commerce Drive, Clifton Park, NY 12065-1350, Telephone: (518) 877-7444, FAX: 518-877-5029
11611 Hart Street, North Hollywood, CA 91605-5882: (818) 982-9600, FAX: 818-503-1102
100 Bobrick Drive, Jackson, TN 38301-5635, Telephone: (731) 424-7000, FAX: 731-424-7800

In Canada: BOBRICK WASHROOM EQUIPMENT COMPANY.

45 Rolark Drive, Scarborough, Ontario M1R 3B1, Telephone: (416) 298-1611, FAX: 416-298-6351

International Sales: BOBRICK WASHROOM EQUIPMENT

11611 Hart Street, North Hollywood, CA 91605-5882, 818-764-1000, FAX: 818-503-9941.

Australia: 1800-353158, FAX: 1800-221926. **United Kingdom:** 208-366-1771, FAX: 208-363-5794.

Germany: 00800-33-66-99-99, FAX: 00800-22-33-44-44. **Email:** international@bobrick.com

Cub™ Dryer

Contents

	Page
1. Information and Troubleshooting	3
2. Limited Warranty	4
3. Schematic Diagram	5

Information and Troubleshooting for the B-705 Cub™ Dryer

For complete set of Installation Instructions refer to form No. 705-69

http://www.bobrick.com/Bobrick/Install_Instructions.aspx

Information about the Dryer:

- Model B-705 Cub™ is not designed for vandal-prone installations. For vandal-prone installations use Bobrick AirCraft® dryers with cast-iron, vitreous enamel finished covers.
- There are no replacement parts available for this dryer except for the cover.

Product Type:



B-705 Series A

Electrical Characteristics:

Model B-705, 115V, 9A, 1035W, 60HZ, Single Phase, cULus listed.

Model B-705E, 220-240V, 6.5A, 1500W, Single Phase, VDE approved, CE marked.

Removal of Cover

Start installation of dryer by removing cover. Remove two screws, from the bottom of the dryer. Pull bottom of the cover away from the mounting base. Rotate cover up until tabs on top of the cover release from the top of the mounting base.

When the tabs on top of the cover are separated from the top of the mounting base, the cover can be removed.



Warning
Risk of electric
shock



Disconnect power
supply before
removing cover

If a fault occurs with the dryer:

1. Check that the electrical supply is OK.
2. Check that the circuit breaker is switched on.
3. Check that sensor is clean and not obstructed, the sensor optics can be cleaned with a cotton swab.

Replacement Parts

705-150 Dryer Cover Series A

Limited Warranty

The Bobrick B-705 CubDryer™ and all parts are warranted to the original owner of the installed unit for one year from date of original installation against defects in factory workmanship or material under normal use and service *

This warranty is limited to repair or exchange of defective parts at the option of Bobrick.

THIS WARRANTY DOES NOT COVER ACCIDENTAL DAMAGE, IMPROPER HANDLING OR INSTALLATION, OR REPAIRS MADE BY UNAUTHORIZED PERSONS, AND SPECIFICALLY EXCLUDES CLAIMS FOR INDIRECT, ACCIDENTAL OR CONSEQUENTIAL DAMAGES TO PROPERTY. THE IMPLIED WARRANTIES OF MERCHANTABILITY AND FITNESS FOR A PARTICULAR PURPOSE ARE LIMITED TO THE SAME DURATION OF THE ABOVE WARRANTY.

Some states do not allow the exclusion of incidental or consequential damages, so the above limitation or exclusion may not apply to you. Some states do not allow limitations on how long an implied warranty lasts, so the above limitation may not apply to you. This warranty gives you specific legal rights, and you may also have other rights which vary from state to state.

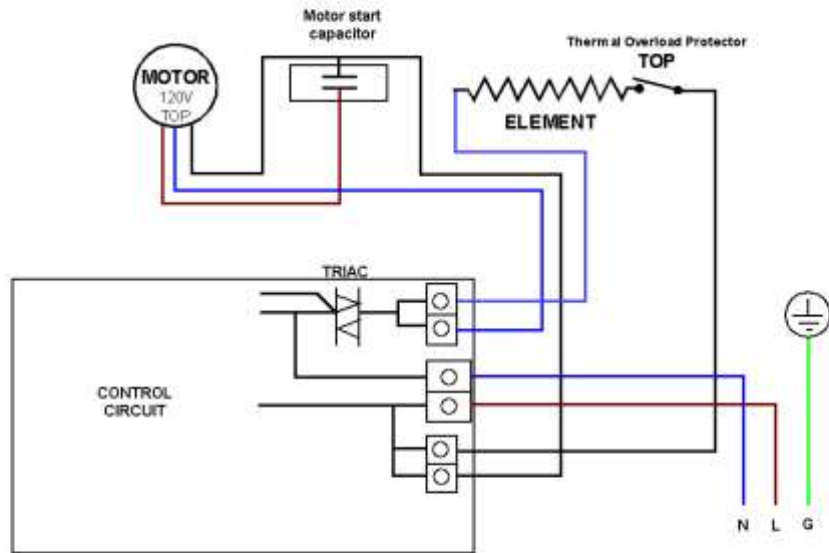
- * **Normal service constitutes performing the following preventive maintenance procedures at six-month intervals:**

Clean any lint, dust or grease from air-intake grille and air-outlet grille.

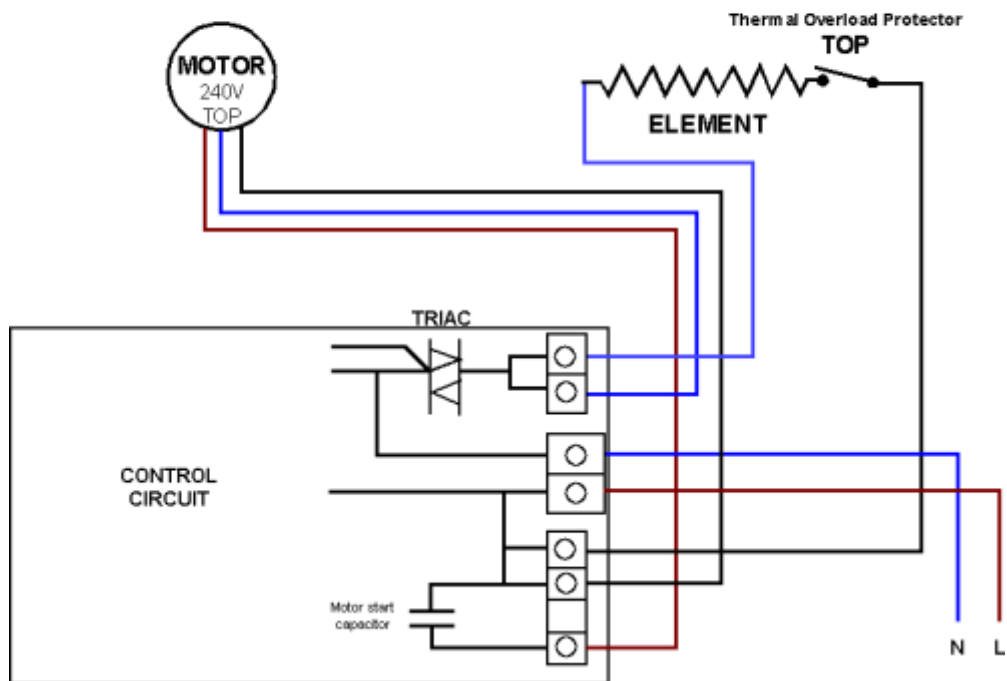
Labor costs for preventive maintenance shall be at owner's expense.

For repair or exchange of defective part, send the part together with installation date and serial number to Bobrick.

Schematic Diagram 115V Dryer



Schematic Diagram 220-240V Dryer





EclipseDryer[®] Guide

Effective 10/09

All Bobrick dryers require cleaning every 6 months to ensure that they function effectively. Please note that failing to clean the dryer may result in malfunction and can void the warranty.

(Refer to page 3 of the [Dryer Troubleshooting and Information Guide](#) for Routine Maintenance Instructions)

www.bobrick.com

In the United States: BOBRICK WASHROOM EQUIPMENT, INC.

200 Commerce Drive, Clifton Park, NY 12065-1350, Telephone: (518) 877-7444, FAX: 518-877-5029
11611 Hart Street, North Hollywood, CA 91605-5882: (818) 982-9600, FAX: 818-503-1102
100 Bobrick Drive, Jackson, TN 38301-5635, Telephone: (731) 424-7000, FAX: 731-424-7800

In Canada: BOBRICK WASHROOM EQUIPMENT COMPANY.

45 Rolark Drive, Scarborough, Ontario M1R 3B1, Telephone: (416) 298-1611, FAX: 416-298-6351

International Sales: BOBRICK WASHROOM EQUIPMENT

11611 Hart Street, North Hollywood, CA 91605-5882, 818-764-1000, FAX: 818-503-9941.

Australia: 1800-353158, FAX: 1800-221926. **United Kingdom:** 208-366-1771, FAX: 208-363-5794.

Germany: 00800-33-66-99-99, FAX: 00800-22-33-44-44. **Email:** international@bobrick.com

EclipseDryer®

Contents

Page

1. [Information and Troubleshooting](#) 3
2. [Limited Warranty](#) 4
3. [Schematic Diagrams](#) 5

Information and Troubleshooting for the EclipseDryer®

For complete set of Installation Instructions refer to form No. 740 748-69

http://www.bobrick.com/Bobrick/Install_Instructions.aspx

Information about the Dryer:

- Durable, deep drawn steel cover with choice of white vitreous enamel or bright polished chrome plated finish.

Product Type:

B-740 Vitreous Enamel Cover (pictured).

B-748 Chrome Plated Cover.



Electrical Characteristics:

Models B-740 (Vitreous enamel cover), B-748 (Chrome-plated cover), 115V AC, 20 Amp, 2300 Watts, 50/60Hz, Single Phase; cULus Listed.

Models B-740 (Vitreous enamel cover), B-748 (Chrome-plated cover), 208–240V AC, 9–10 Amp, 1900–2400 Watts, 50/60Hz, Single Phase; VDE Approved, CE marked, cULus Listed, and CCC approved.

Removal of Cover

Start installation of dryer by removing cover. Loosen single cover-locking screw located in recess in the air inlet/outlet grille using a Phillips-head screwdriver.

To remove cover, place a hand on each side of the cover and tip the bottom away slightly from the air inlet/outlet grille. Lift the cover upwards to release the top retaining bracket from the mounting base.



Warning
Risk of electric
shock



Disconnect power
supply before
removing cover

If a fault occurs with the dryer:

1. Check that the electrical supply is OK.
2. Check that the circuit breaker is switched on.
3. Check that sensor is not obstructed, the sensor optics can be cleaned with a cotton swab.

Replacement Parts

740-120	Grille
740-25	Backplate
740-150	Dryer Cover (White)
748-150	Dryer Cover (Chrome)

Limited Warranty

The Bobrick B-740 & B-748 EclipseDryer® and all parts (except motor brushes) are warranted to the original owner of the installed unit for ten years from date of original installation, against defects in factory workmanship or material under normal use and service *.

Motor brushes shall be warranted for three years from date of installation.

This warranty is limited to repair or exchange of defective parts at the option of Bobrick Washroom Equipment, Inc.

THIS WARRANTY DOES NOT COVER ACCIDENTAL DAMAGE, IMPROPER HANDLING OR INSTALLATION, OR REPAIRS MADE BY UNAUTHORIZED PERSONS, AND SPECIFICALLY EXCLUDES CLAIMS FOR INDIRECT, ACCIDENTAL OR CONSEQUENTIAL DAMAGES TO PROPERTY. THE IMPLIED WARRANTIES OF MERCHANTABILITY AND FITNESS FOR A PARTICULAR PURPOSE ARE LIMITED TO THE SAME DURATION OF THE ABOVE WARRANTY.

Some states do not allow the exclusion of incidental or consequential damages, so the above limitation or exclusion may not apply to you. Some states do not allow limitations on how long an implied warranty lasts, so the above limitation may not apply to you. This warranty gives you specific legal rights, and you may also have other rights which vary from state to state.

- * **Normal service constitutes performing the following preventive maintenance procedures at six-month intervals:**

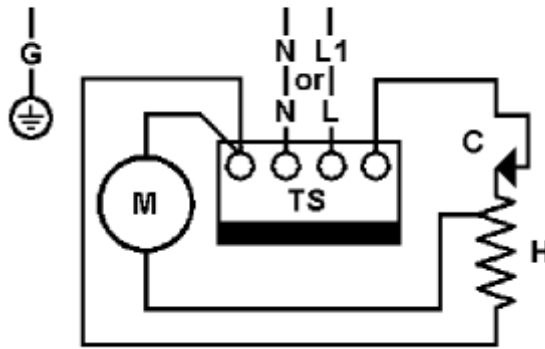
Remove cover and clean any lint, dust or grease from air inlet/outlet grille.

Visually inspect motor brushes to ensure remaining brush length is a minimum of 1/2-inch (13mm).

Labor costs for preventive maintenance shall be at owner's expense.

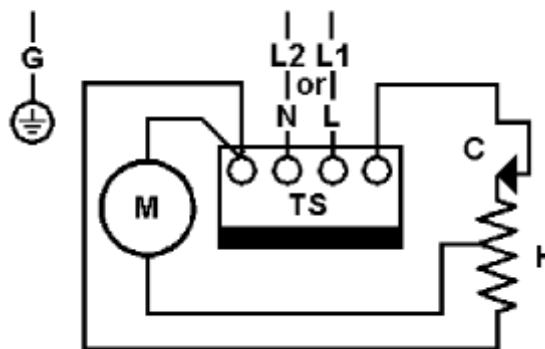
For repair or exchange of defective part, send the part together with installation date and serial number to Bobrick.

Schematic Diagram 115V Dryer



C - Cutout
TS - Timer/Sensor
M - Motor H - Heater

Schematic Diagram 208-240V Dryer



C - Cutout
TS - Timer/Sensor
M - Motor H - Heater



ElanTM
Dryer Guide
International Sales Only
Not for sale in U.S. or Canada

Effective 10/09

All Bobrick dryers require cleaning every 6 months to ensure that they function effectively. Please note that failing to clean the dryer may result in malfunction and can void the warranty.
(Refer to page 3 of the [Dryer Troubleshooting and Information Guide](#) for Routine Maintenance Instructions)

www.bobrick.com

In the United States: BOBRICK WASHROOM EQUIPMENT, INC.

200 Commerce Drive, Clifton Park, NY 12065-1350, Telephone: (518) 877-7444, FAX: 518-877-5029
11611 Hart Street, North Hollywood, CA 91605-5882: (818) 982-9600, FAX: 818-503-1102
100 Bobrick Drive, Jackson, TN 38301-5635, Telephone: (731) 424-7000, FAX: 731-424-7800

In Canada: BOBRICK WASHROOM EQUIPMENT COMPANY.

45 Rolark Drive, Scarborough, Ontario M1R 3B1, Telephone: (416) 298-1611, FAX: 416-298-6351

International Sales: BOBRICK WASHROOM EQUIPMENT

11611 Hart Street, North Hollywood, CA 91605-5882, 818-764-1000, FAX: 818-503-9941.

Australia: 1800-353158, FAX: 1800-221926. **United Kingdom:** 208-366-1771, FAX: 208-363-5794.

Germany: 00800-33-66-99-99, FAX: 00800-22-33-44-44. **Email:** international@bobrick.com

Elan™ Dryer

Contents

	Page
4. Information and Troubleshooting	3
5. Limited Warranty	4
6. Schematic Diagrams	5

Information and Troubleshooting for the B-715 Elan™ Dryer

For complete set of Installation Instructions refer to form No. 715-69

http://www.bobrick.com/Bobrick/Install_Instructions.aspx

Information about the Dryer:

- Durable, brushed stainless steel cover.
- The cover and the electronic controller are available for replacement.

Product Types:

B-715 Series A



Electrical Characteristics.

115V , 15A, 1725W , 60 HZ, cULus listed.

220-240V, 7A, 1500-1700W, 50-60Hz, VDE approved and CE marked.

Removal of Cover.

Remove three screws, one from each side and one from the bottom of the dryer. Pull bottom of the cover away from the mounting base.

If a fault occurs with the dryer:

1. Check that the electrical supply is OK.
2. Check that the circuit breaker is switched on.
3. Check that sensor is clean and not obstructed.



Warning
Risk of electric
shock



Disconnect power
supply before
removing cover

Replacement Parts

715-150	Cover 115V
715E-150	Cover 220-240V
710-360	Controller 115V
710-361	Controller 220-240V

Limited Warranty

The Bobrick B-715 Elan™ Dryer are warranted to the original owner of the installed unit for five years from date of original installation against defects in factory workmanship or material under normal use and service*.

This warranty is limited to repair or exchange of defective parts at the option of Bobrick.

This warranty does not cover accidental damage, improper handling or installation, or repairs made by unauthorized persons, and specifically excludes claims for indirect, accidental or consequential damages to property. The implied warranties of merchantability and fitness for a particular purpose are limited to the same duration of the above warranty.

Some states do not allow the exclusion of incidental or consequential damages, so the above limitation or exclusion may not apply to you. Some states do not allow limitations on how long an implied warranty lasts, so the above limitation may not apply to you. This warranty gives you specific legal rights, and you may also have other rights which vary from state to state.

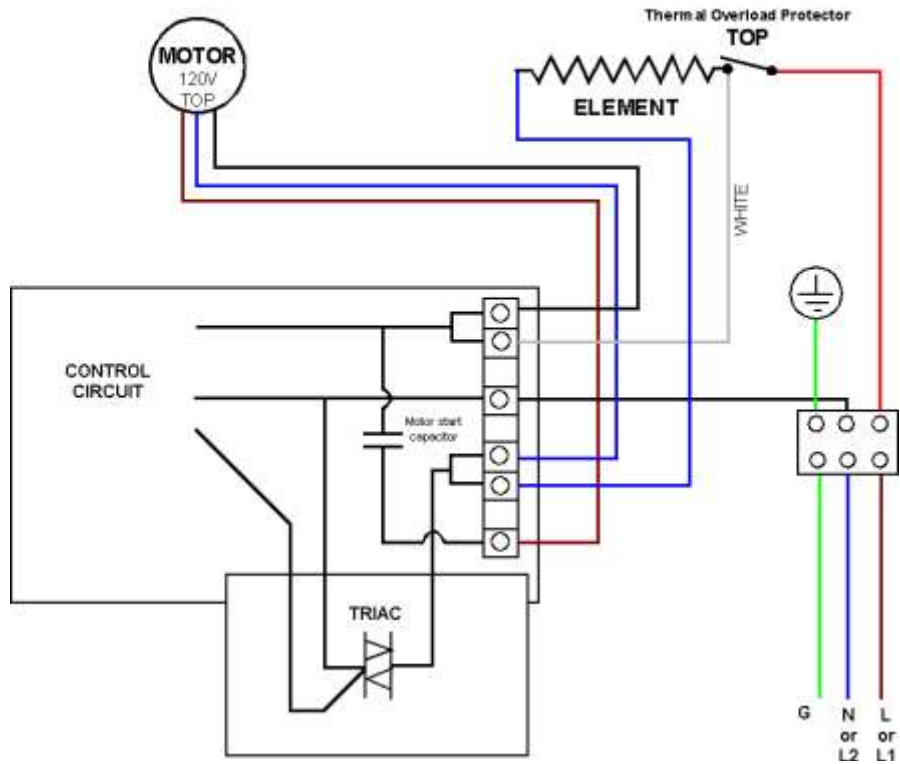
* **Normal service constitutes performing the following preventive maintenance procedures at six-month intervals:**

Remove cover and clean any lint, dust or grease from air inlet/outlet grille.

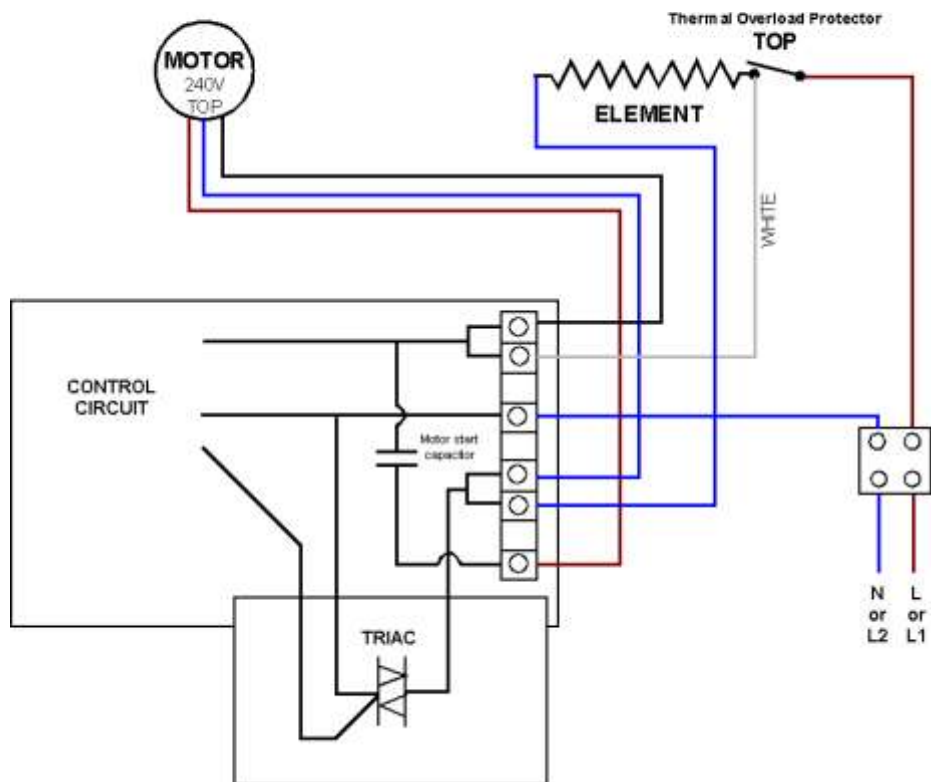
Labor costs for preventive maintenance shall be at owner's expense.

For repair or exchange of defective part, send the part together with installation date and serial number to Bobrick.

Schematic Diagram 208-240V Touch Dryer



Schematic Diagram 208-240V Touch Dryer





TrimLine™ ADA Dryer Guide

Effective 10/09

All Bobrick dryers require cleaning every 6 months to ensure that they function effectively. Please note that failing to clean the dryer may result in malfunction and can void the warranty.

(Refer to page 3 of the [Dryer Troubleshooting and Information Guide](#) for Routine Maintenance Instructions)

www.bobrick.com

In the United States: BOBRICK WASHROOM EQUIPMENT, INC.

200 Commerce Drive, Clifton Park, NY 12065-1350, Telephone: (518) 877-7444, FAX: 518-877-5029
11611 Hart Street, North Hollywood, CA 91605-5882: (818) 982-9600, FAX: 818-503-1102
100 Bobrick Drive, Jackson, TN 38301-5635, Telephone: (731) 424-7000, FAX: 731-424-7800

In Canada: BOBRICK WASHROOM EQUIPMENT COMPANY.

45 Rolark Drive, Scarborough, Ontario M1R 3B1, Telephone: (416) 298-1611, FAX: 416-298-6351

International Sales: BOBRICK WASHROOM EQUIPMENT

11611 Hart Street, North Hollywood, CA 91605-5882, 818-764-1000, FAX: 818-503-9941.

Australia: 1800-353158, FAX: 1800-221926. **United Kingdom:** 208-366-1771, FAX: 208-363-5794.

Germany: 00800-33-66-99-99, FAX: 00800-22-33-44-44. **Email:** international@bobrick.com

TrimLine™ ADA Hand Dryer

Contents	Page
1. <u>Information and Troubleshooting</u>	3
2. <u>Diagnostic Sheet</u>	4
3. <u>Limited Warranty</u>	5
4. <u>Schematic Diagrams</u>	6

Information and Troubleshooting for the TrimLine™ ADA Hand Dryer

For complete set of Installation Instructions refer to form No. 712-69

http://www.bobrick.com/Bobrick/Install_Instructions.aspx

Information about the Dryer:

- Surface-Mounted, ADA compliant.
- Durable, steel cover with painted finish or stainless steel with satin finish.
- Dual air blowers provides comfortable hand drying in less than 25 sec.
- Quiet operation, 73 dBA.



Product Type:

B-7120 White Cover (pictured).

B-7128 Stainless Steel Cover.

Both available as 115V or 208 – 240V.

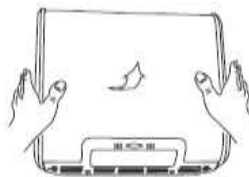
Electrical Characteristics

Model B-7120 White Painted Steel Cover and B-7128 Stainless Steel Cover, 115V AC, 15 Amp, 1725 Watts, 50/60 Hz, Single Phase, cULus listed.

Model B-7120 White Painted Steel Cover and B-7128 Stainless Steel Cover, 208–240V AC, 6.8-7.8 Amp, 1400-1900 Watts, 50/60 Hz, Single Phase; cULus listed, VDE approved and CE marked.

Removal of Cover

1. Remove two screws, from the bottom of the dryer.
Rotate the bottom of the cover forward about 30°, then lift the cover from the mounting base.



Warning
Risk of electric
shock



Disconnect power
supply before
removing cover

If a fault occurs with the dryer:

4. Check that the electrical supply is working properly.
5. Check that the circuit breaker is switched on.
6. Clean the sensor lens.

Replacement Parts

700-121

7120-150 115V

7120-150 230V

7128-150 115V

7128-150 230V

Motor Brushes

Dryer Cover (White)

Dryer Cover (Stainless)

Diagnostic Sheet for TrimLine™ Dryers.

Problem	Possible Cause	Possible Solution
1. Dryer does not run	a) No electricity supply b) Dirty control lens c) Installation fault d) Worn motor brushes e) Element open circuit f) Control nonstart g) Triac open circuit	Check main supply / wiring Clean control lens Check circuit diagram label for possible wiring mistakes Check length of brushes; replace if less than ½" Return dryer to Bobrick for repair Return dryer to Bobrick for repair Return dryer to Bobrick for repair
2. Sparks from dryer	Worn motor brushes	Replace motor brushes
3. Dryer runs at low speed	a) Worn motor brushes b) Triac halfwave c) Control halfwave	Replace motor brushes Return dryer to Bobrick for repair Return dryer to Bobrick for repair
4. Dryer runs continuously	a) Triac short circuit b) Control faulty	Return dryer to Bobrick for repair Return dryer to Bobrick for repair
5. Dryer cycles on and off	Control	Return dryer to Bobrick for repair
6. Dryer sometimes runs	Dirty control lens Control	Clean control lens Replace control
7. Dryer is oversensitive	Control	Replace control
8. Dryer blows cold air or motor runs fast	Heating element	Return dryer to Bobrick for repairs
9. Grinding noise from dryer	a) Worn motor brushes b) Fan cage is bent or damaged	Replace motor brushes Return dryer to Bobrick for repairs
10. Dryer does not run and heating element glows	Worn motor brushes	Replace motor brushes; if still not functioning after replacing the motor brushes, return dryer to Bobrick for repairs.

Limited Warranty

The Bobrick B-7120 and B-7128 Dryer of the serial number(s) indicated herein, and all parts are warranted to the original owner of the installed unit for ten years from date of original purchase against defects in factory workmanship or material under normal use and service*.

This warranty is limited to repair or exchange of defective parts at the option of Bobrick.

THIS WARRANTY DOES NOT COVER ACCIDENTAL DAMAGE, IMPROPER HANDLING OR INSTALLATION, OR REPAIRS MADE BY UNAUTHORIZED PERSONS, AND SPECIFICALLY EXCLUDES CLAIMS FOR INDIRECT, ACCIDENTAL OR CONSEQUENTIAL DAMAGES TO PROPERTY. THE IMPLIED WARRANTIES OF MERCHANTABILITY AND FITNESS FOR A PARTICULAR PURPOSE ARE LIMITED TO THE SAME DURATION OF THE ABOVE WARRANTY.

Some states do not allow the exclusion of incidental or consequential damages, so the above limitation or exclusion may not apply to you. Some states do not allow limitations on how long an implied warranty lasts, so the above limitation may not apply to you. This warranty gives you specific legal rights, and you may also have other rights which vary from state to state.

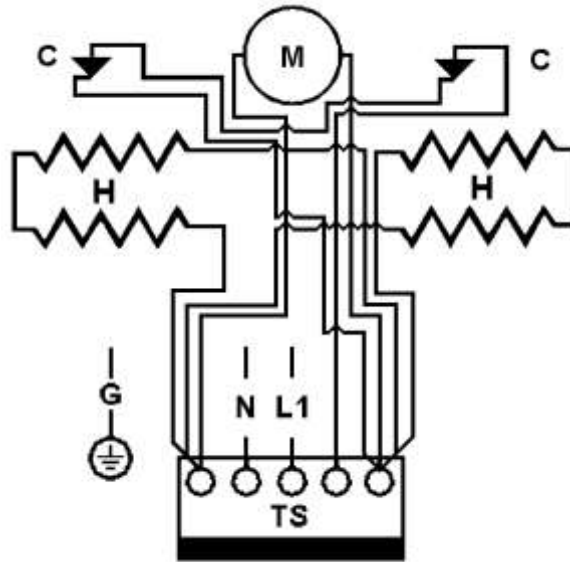
- * **Normal service constitutes performing the following preventive maintenance procedures at six-month intervals:**

Clean any lint, dust or grease from air inlet/outlet grille.

Labor costs for preventive maintenance shall be at owner's expense.

For repair or exchange of defective part, send the part together with installation date and serial number to Bobrick.

Schematic Diagram 115V Dryer



Schematic Diagram 208-240V Dryer

