



Technical Data

**AccentSeries™
HIGH PRESSURE LAMINATE (HPL)
PARTITIONS AND SCREENS
WITH STAINLESS STEEL EDGES**

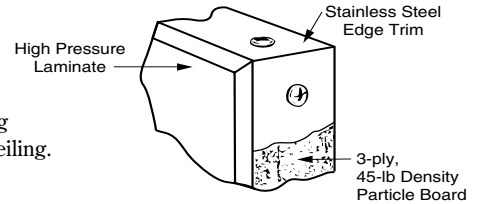
**1530
SERIES**

Specify Product Application:

- Toilet Partitions
- With Outswing Door
- Urinal Screens

Specify Series Required:

- 1531 Series Floor-Anchored
- 1532 Series Overhead-Braced
- 1535 Series Wall-Hung Urinal Screens
- 1538 Series Ceiling-Hung for 8' (244cm) Ceiling or as required up to 10' (308cm) Ceiling.



STANDARD-SIZE COMPONENTS:

Stiles: For compartments – 3", 4", 5", 6", 7", 8"^a, 10", 12", 16", 18", 20", or 24" (8, 10, 13, 15, 18, 20, 25, 30, 41, 46, 51, or 61cm) wide; for screens – 6" (15cm) wide. **Floor-anchored** – 69" (175cm) high; **overhead-braced** – 82-5/16" (209cm) high; **ceiling-hung** – 83" (211cm) high for 8' (244cm) ceilings or as required up to 10' (305cm) ceilings.

Doors: 58" (147cm) high. **Inswing doors** are standard for 22" to 37" (56–94cm) widths in whole-inch increments. **Outswing^b doors** are standard for 25" to 37" (64–94cm) widths in whole-inch increments.

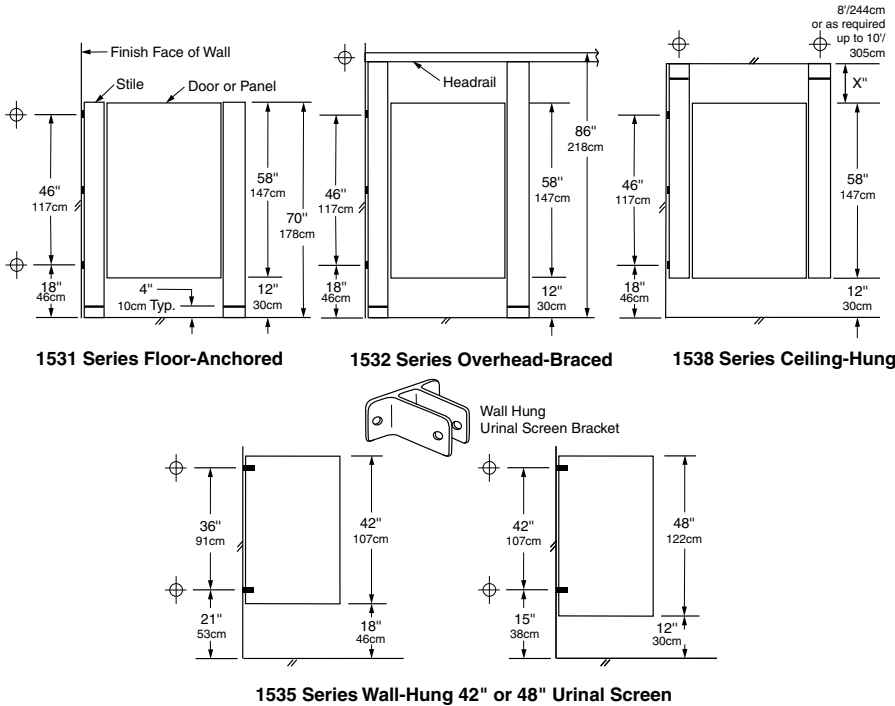
Wall Posts: 1-1/2" wide, 58" high (4 x 147cm).

Panels: For Compartments – Up to 84" (213cm) wide; 58" (147cm) high. For wall-hung screens – 42" or 48" (107 or 122cm) high; 18" or 24" wide (46 or 61cm). For ceiling-hung and floor-anchored screens – 58" (147 cm) high; 24", 36", 48", or 60" (61, 91, 122, or 152cm) wide.

^a Minimum 8" (20cm) wide stile recommended for ceiling-hung and floor-anchored compartments.

^b Use outswing doors to comply with local codes requiring access for physically disabled persons.

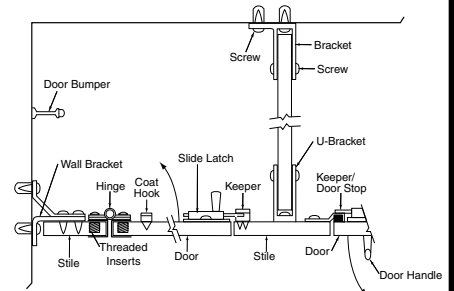
COMPARTMENT AND SCREEN ELEVATIONS



TYPICAL HARDWARE DETAILS

Concealed Stainless Steel Door Hardware and Concealed Mounting Brackets

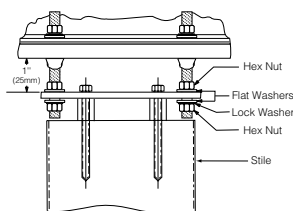
Standard gaps are provided at all walls and between components to allow for hardware attachment. Wall gaps are standard 1/2" to 1"



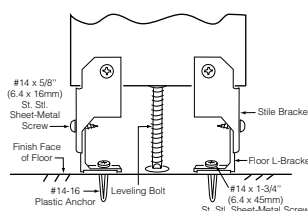
These mounting points require wall backing. For suggested backing methods, Bobrick Advisory Bulletins TB-32 for ceiling-hung installations and TB-46 for floor-anchored are available upon request.

TYPICAL INSTALLATION DETAILS

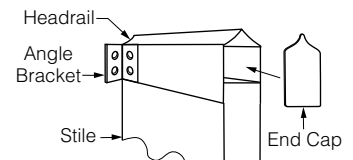
**Floor-Anchored or Ceiling-Hung Leveling Device
(Ceiling Leveling Device Shown)**



Overhead-Braced Floor Leveling Device



Overhead-Bracing



MATERIALS:

Stiles — 1" (25mm) finished thickness: 3-ply, 45-lb (20.4-kg) density, resin-impregnated particle board; surfaces and edges are .050" (1.3mm) thick, high-pressure plastic laminate with colored face sheets and matte finish. ¹ Edges are routed to allow flush fit of edge trim. Edge trim is 18-8, Type-304 stainless steel channel with satin finish.

Leveling Device — Overhead-Braced Series: 12-gauge (2.8mm), 3" x 1-1/4" (75 x 32mm) plated steel stile bracket factory installed to bottom of stile. Furnished with leveling bolt, shoe retainer, floor L-bracket, plastic anchor #14-16, #14 x 5/8" (M6.3 x 16mm) stainless steel sheet-metal screws and #14 x 1-3/4" (M6.3 x 45mm) stainless steel sheet-metal floor screws.

Leveling Device — Floor-Anchored or Ceiling-Hung: 3/8" x 1" (10 x 25mm) steel bar, zinc-chromate plated, bolted to stile using 6" x 3/8" (152 x 10mm) diameter carbon steel lag bolt. Furnished with 3/8" (10mm) diameter threaded rods, hex nuts, washers, spacer sleeve (ceiling-hung only), expansion shield and shoe retainer.

Shoe: 18-8, Type-304, 22-gauge (0.8mm) stainless steel with satin finish; 4" (102mm) high. One-piece shoe is open-ended, and may be mounted blind against wall using shoe clip fastener on wall side.

Panels and Doors — 1" (25mm) finished thickness: 3-ply, 45-lb (20.4-kg) density, resin-impregnated particle board; surfaces and edges are .050" (1.3mm) thick, high-pressure plastic laminate with colored face sheets and matte finish. ¹ Edges are routed to allow flush fit of edge trim. Edge trim is 18-8, Type-304 stainless steel channel with satin finish.

Headrail (For 1532 Series Compartments Only): Extruded anodized aluminum with satin finish. Enclosed construction with vandal-resistant sloping top. Face has raised grip-resistant edge.

Designer's Notes: Headrails with integral curtain tracks and hooks are available for compartments without doors. Optional vinyl curtains are available.

Wallpost: 1-1/2" (38mm) x 1" (25mm) x 58" (147cm), 16 gauge (1.6mm) thick, 18-8, Type-304 stainless steel. Pre-drilled for door mounting hardware.

Door and Mounting Hardware — Hinges, door latches, door keepers, and coat hooks are constructed of stainless steel with satin finish. Theft-resistant, stainless steel pin-head torx screws are furnished for all inswing and outswing doors. Mounting brackets are constructed of 18-8, Type-304, heavy-gauge stainless steel with satin finish. Stainless steel pin-head torx screws are furnished for mounting brackets. Toilet compartment door is locked from inside by sliding door latch into keeper. A locked compartment may be opened from outside by lifting door to disengage latch from keeper. Door pull handles (2) are provided for installation on both sides of the Wheelchair Accessible and Ambulatory Toilet Compartment door adjacent to the door latch, 34" minimum to 48" maximum above the floor, to comply with ADA Section 604.8.2.2.

INSTALLATION:

Bobrick installation instructions are packed with each shipment and are available also in advance on request.

Notes:

1. Where water from showers or hose-down cleaning comes in contact with partitions, Bobrick 1080 Series water-resistant, solid phenolic partitions are recommended.
2. Ceiling-hung partitions require structural members (not furnished by Bobrick) in ceiling. For suggested types of ceiling support systems, see Bobrick Advisory Bulletin TB-32.
3. Wall backing is required to secure the mounting brackets of panels, stiles, and wall posts. For suggested wall backing, see Bobrick Advisory Bulletin TB-46.
4. Floor-anchored stiles are furnished with expansion anchors and threaded rods. The expansion anchors require minimum 2" (50mm) penetration into minimum 3" (75mm) thick structural concrete.
5. Bobrick stainless steel partition-mounted washroom accessories are available for mounting in panels between two compartments. See current Bobrick Catalog for description of accessories. Cutouts in panels can be pre-cut for Bobrick models at factory if location and size of all cutouts and Bobrick model numbers are furnished at time of order.

GUARANTEE:

The Bobrick toilet partition panels, doors and stiles are warranted for a period of 5 years against breakage, corrosion, delaminating and defects in workmanship from the date of purchase for the periods set forth (this limited warranty is conditioned on the toilet partitions being properly installed, used and serviced). Spraying down or hosing HPL partitions voids warranty. Any products returned to Bobrick under this guarantee will be repaired or replaced at no charge.

SPECIFICATION:

High pressure laminate _____ (insert one: toilet partitions or urinal screens) shall be _____ (insert one: floor-anchored, ceiling-hung, overhead-braced or wall-hung). Stiles, panels, and doors shall have a finished thickness of 1" (25mm). Core of panels, doors, and stiles shall be 3-ply, 45-lb (20.4-kg) density, resin-impregnated particle board. Stiles shall have a one-piece, Type-304, satin-finish stainless steel shoe that is 4" (102mm) high. Surfaces and edges shall be .050" (1.3mm) thick, high-pressure laminate with colored face sheets and matte finish; ¹ bonding shall be done using adhesives especially formulated to prevent delamination from moisture and heat normally existing in public washrooms. Stiles, panels, and doors shall be _____ (insert color name and number from current Bobrick Catalog). Headrails for overhead-braced compartments shall be anodized aluminum with satin finish. Hinges, slide latches, door keepers and coat hooks shall be stainless steel with satin finish. Theft-resistant, stainless steel pin-head torx screws are furnished for all inswing and outswing doors. Mounting brackets shall be 18-8, Type-304, heavy-gauge stainless steel with satin finish. Stainless steel pin-head torx screws shall be furnished for all mounting brackets. Toilet compartment door shall be locked from inside by sliding door latch into keeper. A locked compartment may be opened from outside by lifting door to disengage latch from keeper. Edge trim shall be 18-8, Type-304 stainless steel channel with stain finish. Edges of stiles, panels and doors shall be routed to allow flush fir of edge trim.

_____ (insert one: Toilet Partitions, Dressing Compartments, Urinal Screens) shall be _____ Series (insert series number) of Bobrick Washroom Equipment, Inc., Clifton Park, New York; Jackson, Tennessee; Los Angeles, California; Bobrick Washroom Equipment Company, Scarborough, Ontario; Bobrick Washroom Equipment Pty. Ltd., Australia; and Bobrick Washroom Equipment Limited, United Kingdom.

¹ Non-standard colors may utilize .035" to 0.39" thick, high pressure laminate.