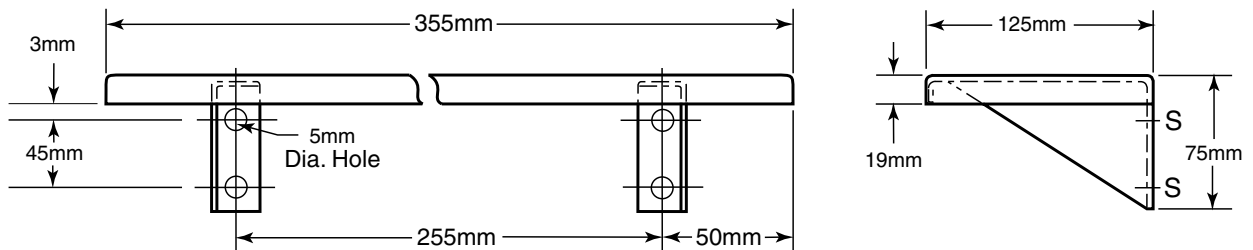




**Technical Data**

# STAINLESS STEEL SHELF

**B-295 X 14**  
Standard for  
International



## MATERIALS:

**Shelf** — 18-8 S, type-304, 18-gauge (1.2mm) stainless steel with satin finish. 19mm return edges for maximum rigidity. Front edge is hemmed for safe handling.

**Mounting Brackets** — 18-8 S, type-304, 16-gauge (1.6mm) stainless steel with satin finish. Welded to back return of shelf and secured inside front hem of shelf.

## INSTALLATION:

Secure shelf to wall with sheet-metal screws (not furnished) at points indicated by an S. For plaster or dry wall construction, provide concealed backing to comply with local building codes, then secure shelf with sheet-metal screws. For other wall surfaces, provide fiber plugs or expansion shields for use with sheet-metal screws, or provide 3mm toggle bolts or expansion bolts.

## SPECIFICATION:

Shelf shall be type-304, 18-gauge (1.2mm) stainless steel with satin finish. Mounting brackets, welded to shelf, shall be 16-gauge (1.6mm) stainless steel. Shelf shall be 355mm long by 125mm wide with 19mm return edges. Front edge shall be hemmed for safe handling.

**Stainless Steel Shelf shall be Model B-295 x 14 of Bobrick Washroom Equipment, Inc., Clifton Park, New York; Jackson, Tennessee; Los Angeles, California; Bobrick Washroom Equipment Company, Scarborough, Ontario; Bobrick Washroom Equipment Pty. Ltd., Australia; and Bobrick Washroom Equipment Limited, United Kingdom.**