

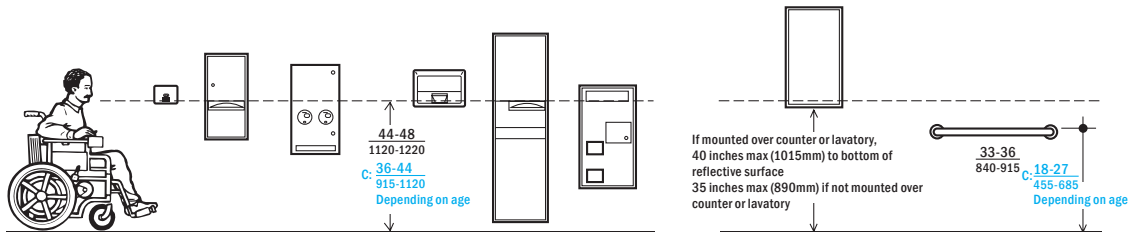
GUIDELINES FOR ACCESSIBLE RESTROOM DESIGN

1. Entrances and exits laid out to minimize congestion and for universal access (Pg. 4)
2. Passageways and access aisles are a minimum 42"- 48" wide (Pg.4)
3. Limit protrusions to maximum 4" in all circulation routes between 27"- 80" above finish floor (Pg.6)
4. Consider increased wheelchair turning spaces for scooters (Pg. 2)
5. Accessories should be fully recessed into walls when possible (Pg.6)
6. Accessories/controls should comply (reach, hand dexterity, 5 lbs. of force) (Pg. 6)
7. Centered minimum clear floor space 30"x 48" provided at each accessory (Pg.3)
8. Lavatories (Pg.5), urinals (Pg.10), and toilet compartments must comply (Pgs. 7-9)
9. Where 6+ toilet compartments/urinals, provide one Ambulatory Accessible Compartment in addition to the Wheelchair Accessible Compartment (Pg.11)
10. Baby Changing Station locations should not block accessible accessories and fixtures (Pg.6)

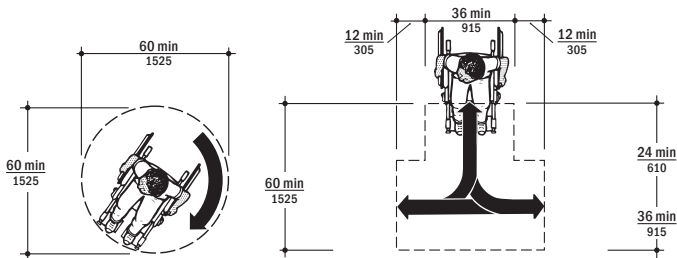


BUILDING VALUE SINCE 1906

DOWNLOAD THE GUIDE AT: [HTTPS://WWW.BOHRICK.COM/WP-CONTENT/UPLOADS/PLANNINGGUIDE.PDF](https://www.bohrick.com/wp-content/uploads/planningguide.pdf)



Mounting Heights for Restroom Accessories.



Wheelchair Turning Spaces.



BUILDING VALUE SINCE 1906
BOBRICK.COM