

EVOLVE CUBICLES

Exclusive for the Middle East



Durability, European design and soft-close finally within reach.

DESIGN

PRIVACY

DURABLE

COMPLIANT

BOBRICK

BUILDING VALUE SINCE 1906

EVOLVE CUBICLES

COMPACT GRADE LAMINATE



DURABLE & QUIET. BUDGET-FRIENDLY.

Evolve Cubicles help design professionals create resilient, European-style cubicle systems without compromising project budgets. Featuring a spring-loaded pedestal and soft-close door, you'll get the elegant function that discriminating projects demand.

SPECIFICATIONS

- Floor-anchored, overhead-braced installation
- Class 0 or Class 1 Fire-Rated Compact Grade Laminate (Solid Phenolic)
- 12mm door and panel thickness
- 2083mm from floor to top of cubicle
- 100mm floor clearance
- 900mm maximum door opening

FEATURES

- Soft-close spring loaded closing mechanism incorporated into pivot foot
- Anodized aluminum anti-finger trap frame provides superior structural support
- Occupancy indicator includes emergency key release feature
- Closing latch provides a hands-free operation for a more hygienic experience
- 10 year warranty

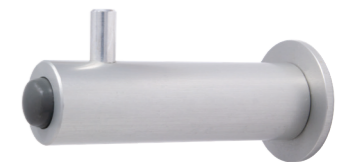
APPLICATIONS

Evolve is engineered for heavy traffic applications where durability and privacy are important, but budget may be limited, such as:

- Shopping centers
- Airports
- Convention centers
- Higher education facilities
- Locker rooms

SMART DESIGN

Evolve's anodized aluminum hardware includes robe hook, occupancy indicator and latch and frame.



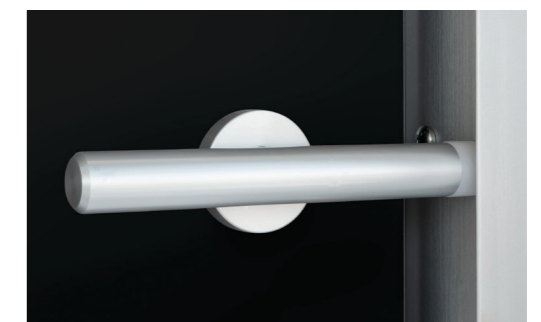
Robe hook



Occupancy Indicator



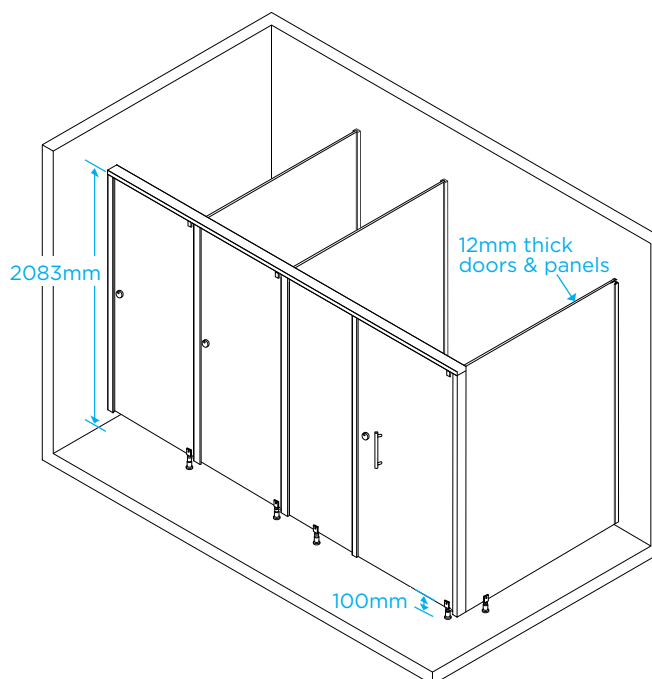
Sturdy Anti-Finger Trap Frame



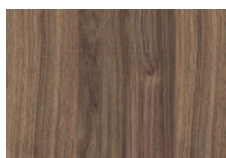
Sacrificial Emergency Latch

REFINED & QUIET

Spring-loaded pedestal provides a muted and graceful soft-close.



STANDARD COLOR OPTIONS*



616 Walnut



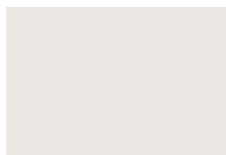
1666 American Beech



1860 Pacific Blue



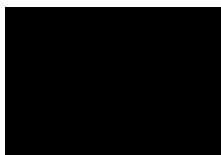
460 Green Grass



406 Spring White



813 Beige Manhattan



421 Black

*Other colors are available.
Please check with your
Bobrick representative.

[Bobrick.com](https://www.bobrick.com)

Bobrick Washroom Equipment UAE
Level 1, GRG Business Centre
Oud Metha Building
Dubai healthcare city
Dubai. UAE.

+971 4 3871357

infomea@bobrick.com



BUILDING VALUE SINCE 1906

Evolve is part of an industry-leading line of toilet partitions and cubicle systems by Bobrick. To learn more, visit [bobrick.com/evolve-me](https://www.bobrick.com/evolve-me). Colors are printed reproductions and are for descriptive purposes only. Refer to manufacturer's samples for absolute color fidelity. Color guides and samples are available from Bobrick on request. Material can vary in color between production batches. Made in Deeside, United Kingdom.

For product warranty information, please visit [bobrick.com](https://www.bobrick.com)